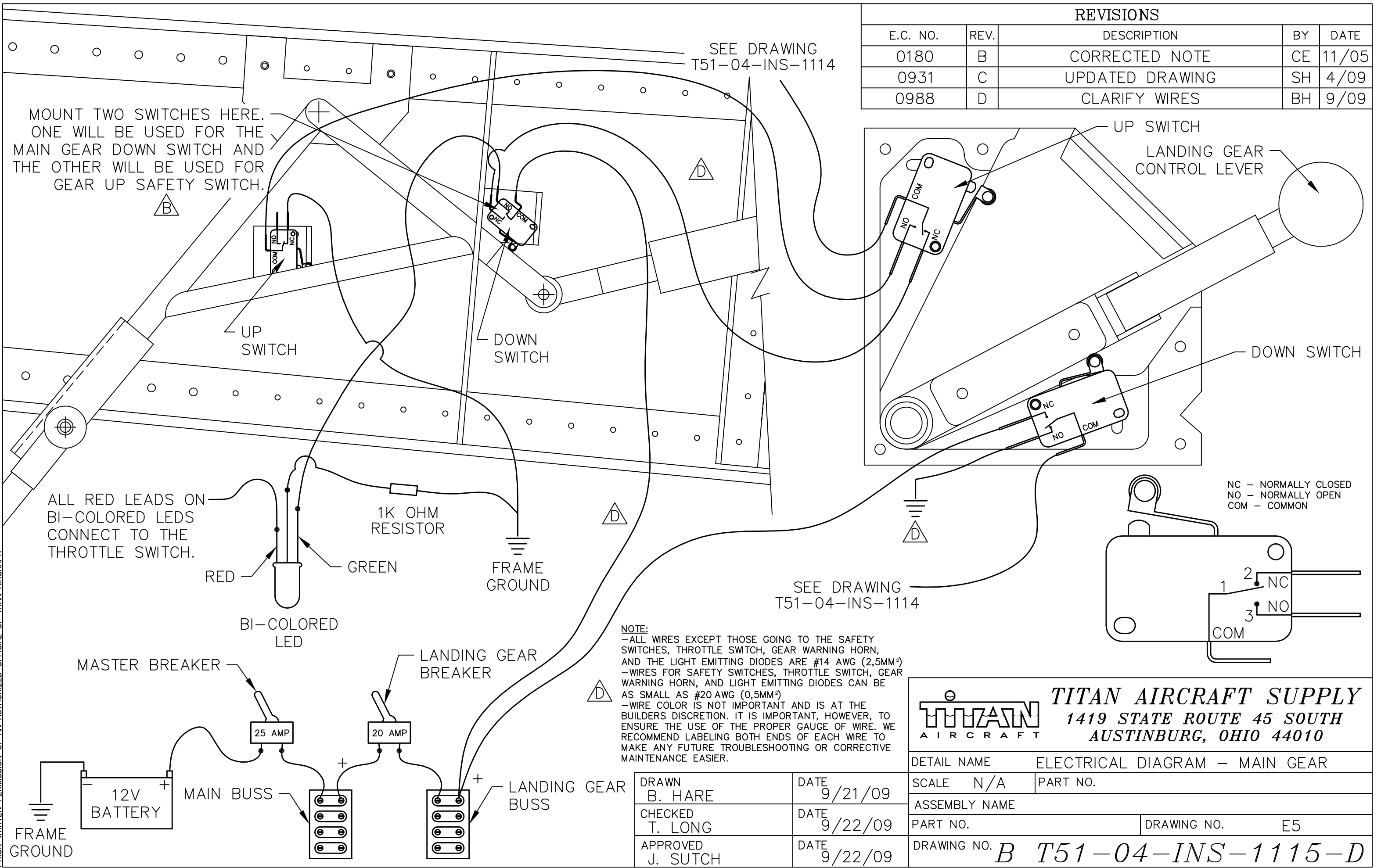


REVISIONS

E.C. NO.	REV.	DESCRIPTION	BY	DATE
0180	B	CORRECTED NOTE	CE	11/05
0931	C	UPDATED DRAWING	SH	4/09
0988	D	CLARIFY WIRES	BH	9/09



MOUNT TWO SWITCHES HERE. ONE WILL BE USED FOR THE MAIN GEAR DOWN SWITCH AND THE OTHER WILL BE USED FOR GEAR UP SAFETY SWITCH.

SEE DRAWING T51-04-INS-1114

UP SWITCH
LANDING GEAR CONTROL LEVER

UP SWITCH

DOWN SWITCH

DOWN SWITCH

ALL RED LEADS ON BI-COLORED LED CONNECT TO THE THROTTLE SWITCH.

1K OHM RESISTOR

FRAME GROUND

RED GREEN
BI-COLORED LED

MASTER BREAKER

25 AMP

LANDING GEAR BREAKER

20 AMP

MAIN BUSS

LANDING GEAR BUSS

12V BATTERY

FRAME GROUND

NC - NORMALLY CLOSED
NO - NORMALLY OPEN
COM - COMMON

SEE DRAWING T51-04-INS-1114

NOTE:
-ALL WIRES EXCEPT THOSE GOING TO THE SAFETY SWITCHES, THROTTLE SWITCH, GEAR WARNING HORN, AND THE LIGHT EMITTING DIODES ARE #14 AWG (2,5MM²)
-WIRES FOR SAFETY SWITCHES, THROTTLE SWITCH, GEAR WARNING HORN, AND LIGHT EMITTING DIODES CAN BE AS SMALL AS #20 AWG (0,5MM²)
-WIRE COLOR IS NOT IMPORTANT AND IS AT THE BUILDERS DISCRETION. IT IS IMPORTANT, HOWEVER, TO ENSURE THE USE OF THE PROPER GAUGE OF WIRE. WE RECOMMEND LABELING BOTH ENDS OF EACH WIRE TO MAKE ANY FUTURE TROUBLESHOOTING OR CORRECTIVE MAINTENANCE EASIER.

TITAN AIRCRAFT SUPPLY
1419 STATE ROUTE 45 SOUTH
AUSTINBURG, OHIO 44010

DETAIL NAME	ELECTRICAL DIAGRAM - MAIN GEAR		
SCALE	N/A	PART NO.	
ASSEMBLY NAME			
PART NO.		DRAWING NO.	E5
DRAWING NO.	B T51-04-INS-1115-D		

DRAWN B. HARE	DATE 9/21/09
CHECKED T. LONG	DATE 9/22/09
APPROVED J. SUTCH	DATE 9/22/09

THIS DOCUMENT PROPRIETARY TO TITAN AIRCRAFT, AND IS NOT TO BE USED, CIRCULATED, REPRODUCED, COPIED, OR DISCLOSED IN ANY MANNER WITHOUT PRIOR WRITTEN PERMISSION OF AN AUTHORIZED OFFICIAL OF TITAN AIRCRAFT.