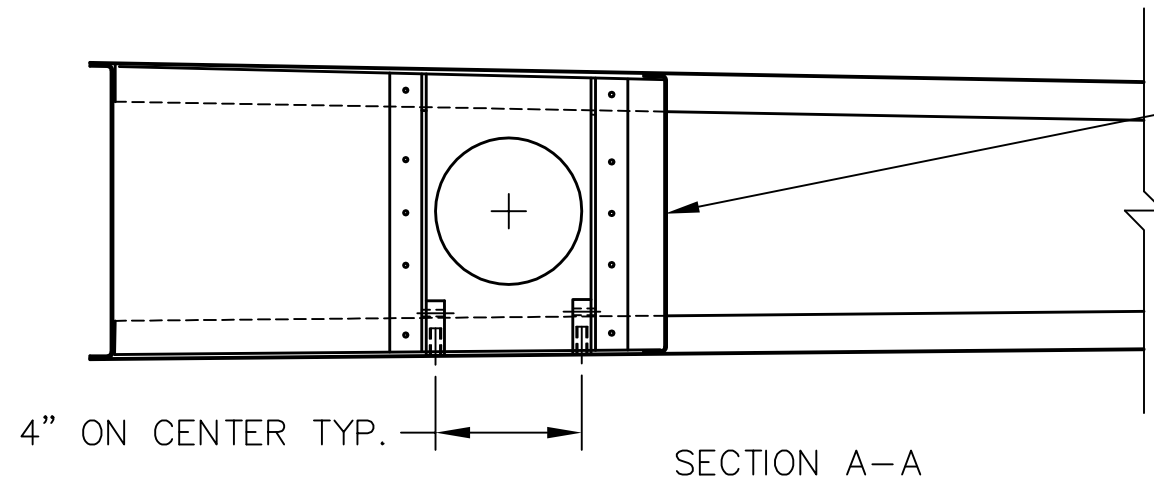


REVISIONS

E.C. NO.	REV.	DESCRIPTION	BY	DATE
0551	B	HARD POINTS RE-DESIGNED	SH	11/07
0604	C	NOTE ADDED	SH	1/08
1033	D	HARDWARE CHANGE	BH	1/10

NOTES:

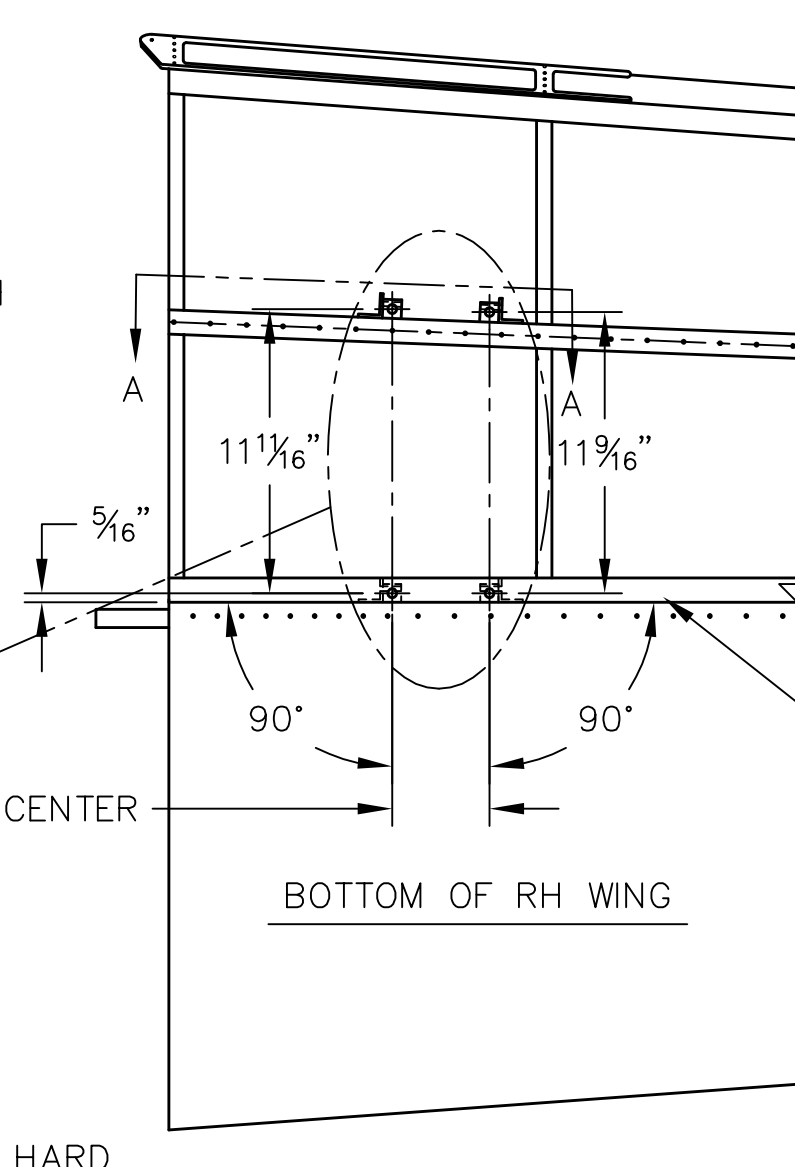
- SEE DRAWINGS T51-02-INS-0386, 0387, & 0388 FOR INSTALLATION OF THE WING RIBS AND THE INTERMEDIATE WEBS.
- USE SD43BS RIVETS TO ATTACH THE HARD POINT MOUNTS TO THE MAIN SPAR AND INTERMEDIATE WEBS.
- USE (4) AN3-11A BOLTS, AN960-10 WASHERS, AND AN365-1032 LOCKNUTS ON EACH WING WHEN ATTACHING THE TIE DOWN FITTINGS TO THE HARD POINTS.
- USE (4) 5/16"-18 X 1" BOLTS & 5/16" LOCK WASHERS ON EACH DROP TANK WHEN ATTACHING TO THE WINGS.
- AFT FITTINGS SHOULD BE PARALLEL WITH THE WINGS INBOARD EDGE. $\triangle C$



INTERMEDIATE WEB - LARGE
MW02-135 (RH)
MW02-136 (LH)

4" ON CENTER TYP.

SECTION A-A



EXTERNAL FUEL TANK HARD POINT - AFT MOUNT LH & RH
MW04-262 $\triangle B$
(4) REQ'D

WING TIE DOWN FITTING
MW02-35
(4) REQ'D PER WING

(4) AN3-11A BOLTS
(4) AN960-10 WASHERS
(4) AN365-1032 LOCKNUTS

4" ON CENTER

WING SPAR WEB STIFFENER #2
MW02-19
(ALREADY ATTACHED TO WINGS) $\triangle B$

90° TYP.

EXTERNAL FUEL TANK HARD POINT - FWD MOUNT LH & RH
MW04-265 $\triangle B$
(2) REQ'D

MAIN SPAR

BOTTOM OF RH WING

THIS DOCUMENT PROPRIETARY TO TITAN AIRCRAFT, AND IS NOT TO BE USED, CIRCULATED, REPRODUCED, COPIED, OR DISCLOSED IN ANY MANNER WITHOUT PRIOR WRITTEN PERMISSION OF AN AUTHORIZED OFFICIAL OF TITAN AIRCRAFT.

UNLESS OTHERWISE SPECIFIED:
- ALL DIMENSIONS ARE IN INCHES.
- APPLY STANDARD TOLERANCES:
0.00 = ±.030
0.000 = ±.010
ANGULAR ±1°
- BREAK ALL SHARP CORNERS

MATERIAL	
DRAWN S. HENDERSON	DATE 9/26/07
CHECKED R. INGLE	DATE 2/16/10
APPROVED K. BROOKS	DATE 2/16/10

TITAN AIRCRAFT SUPPLY
1419 STATE ROUTE 45 SOUTH
AUSTINBURG, OHIO 44010

DETAIL NAME EXTERNAL FUEL TANK HARD POINT INS.

SCALE N/A	PART NO.
ASSEMBLY NAME	
PART NO.	DRAWING NO. W7
DRAWING NO. B T51-07-INS-1659-D	