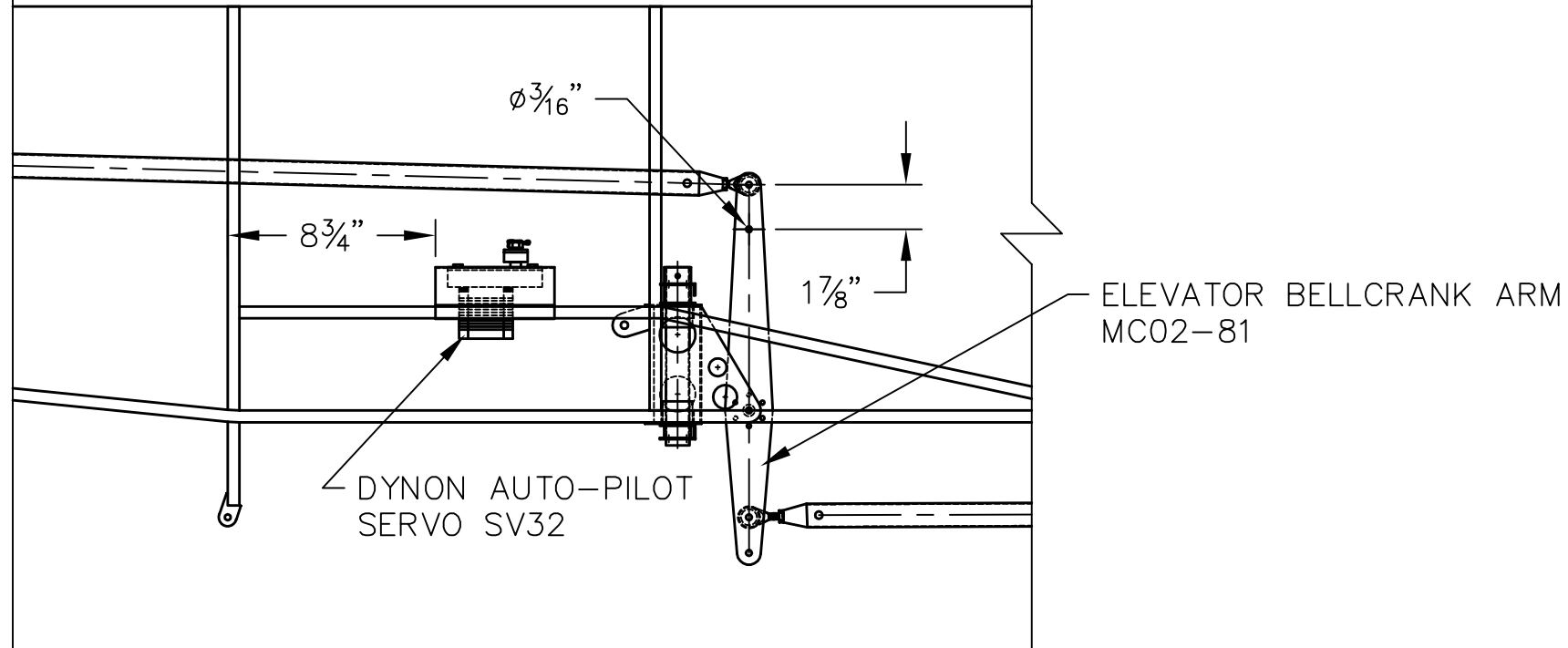


REVISIONS				
E.C. NO.	REV.	DESCRIPTION	BY	DATE
	A	DRAWING RELEASED	SH	3/09

STA. #11

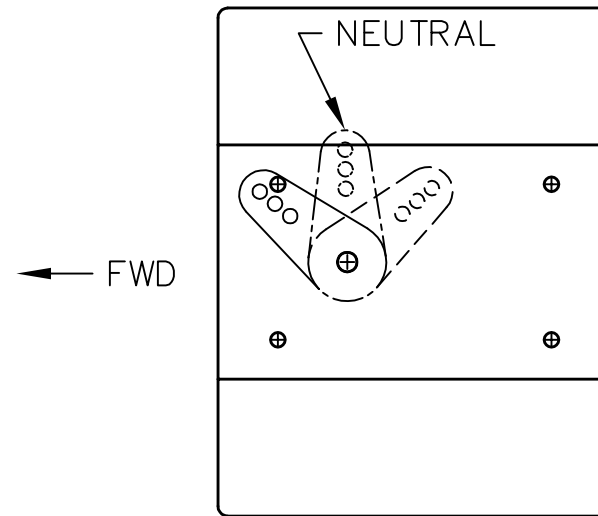
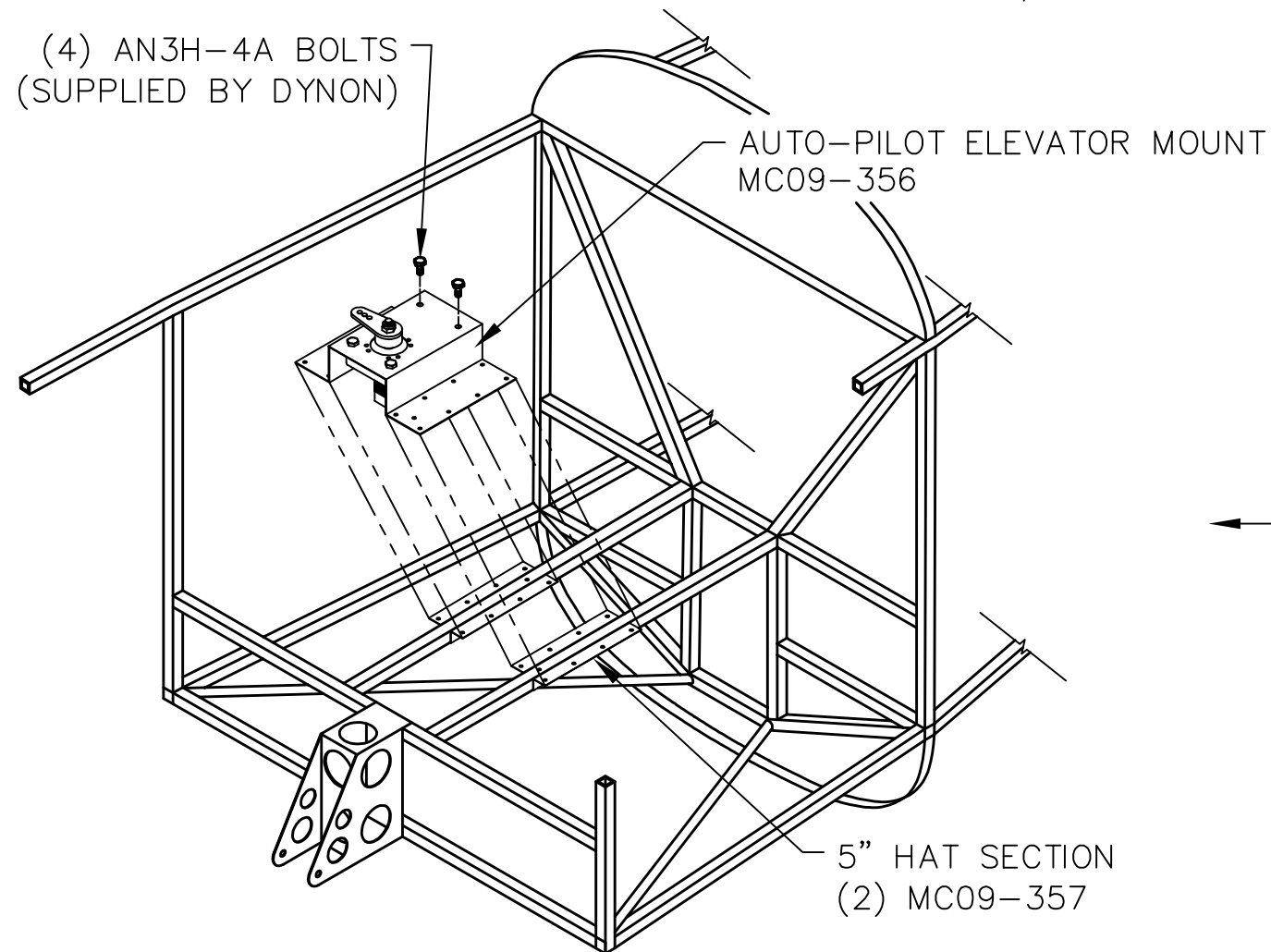
STA. #10



NOTES:

- POSITION THE AUTO-PILOT MOUNT SO THE BACK EDGE IS AT 8 3/4" FROM THE AFT SIDE OF STA. #11. (BE SURE TAILWHEEL CYLINDER DOES NOT INTERFERE WITH SERVO)
- USE SILICONE (MF05-447) OR URALANE ADHESIVE TO ATTACH THE 5" HAT SECTIONS TO THE FUSELAGE FRAME.
- USING A #30 DRILL, DRILL THE RIVET PATTERN INTO THE AUTO-PILOT MOUNT, SO IT CAN BE MATCH DRILLED TO THE HAT SECTIONS AND RIVETED IN PLACE. (APPROX. 1 1/2" RIVET SPACING)
- DURING FINAL INSTALLATION IT IS RECOMMENDED TO DRILL ONE HOLE ON EACH SIDE OF THE MOUNT INTO THE FUSELAGE STEEL TUBES IN OPPOSITE CORNERS, THIS WILL HELP TO PREVENT THE MOUNT FROM MOVING OR TWISTING WHILE SERVO IS IN MOTION.
- A NEW HOLE WILL NEED TO BE DRILLED INTO THE ELEVATOR BELLCRANK ARMS (MC02-81) THIS HOLE FOR THE P/P ROD COMING FROM THE SERVO. FROM THE EXISTING TOP HOLE, MEASURE DOWN 1 7/8" ON THE CENTER LINE AND DRILL A 3/16" HOLE.
- USING THE P/P ROD SUPPLIED BY DYNON, CUT TO LENGTH AND TAP EACH END USING A 1/4-28 TAP.

(4) AN3H-4A BOLTS
(SUPPLIED BY DYNON)



TITAN AIRCRAFT SUPPLY
 1419 STATE ROUTE 45 SOUTH
 AUSTINBURG, OHIO 44010

DETAIL NAMEDYNON AUTO PILOT INSTALLATION (ELEVATOR)

DRAWN S. HENDERSON	DATE 3/27/09
CHECKED	DATE
APPROVED	DATE

SCALE 1/4"=1"	PART NO.
ASSEMBLY NAME DYNON AUTO PILOT SERVO SV32	
PART NO.	DRAWING NO. 01
DRAWING NO. B T51-09-INS-1816-A	

THIS DOCUMENT PROPRIETARY TO TITAN AIRCRAFT, AND IS NOT TO BE USED, CIRCULATED, REPRODUCED, COPIED, OR DISCLOSED IN ANY MANNER WITHOUT PRIOR WRITTEN PERMISSION OF AN AUTHORIZED OFFICIAL OF TITAN AIRCRAFT.