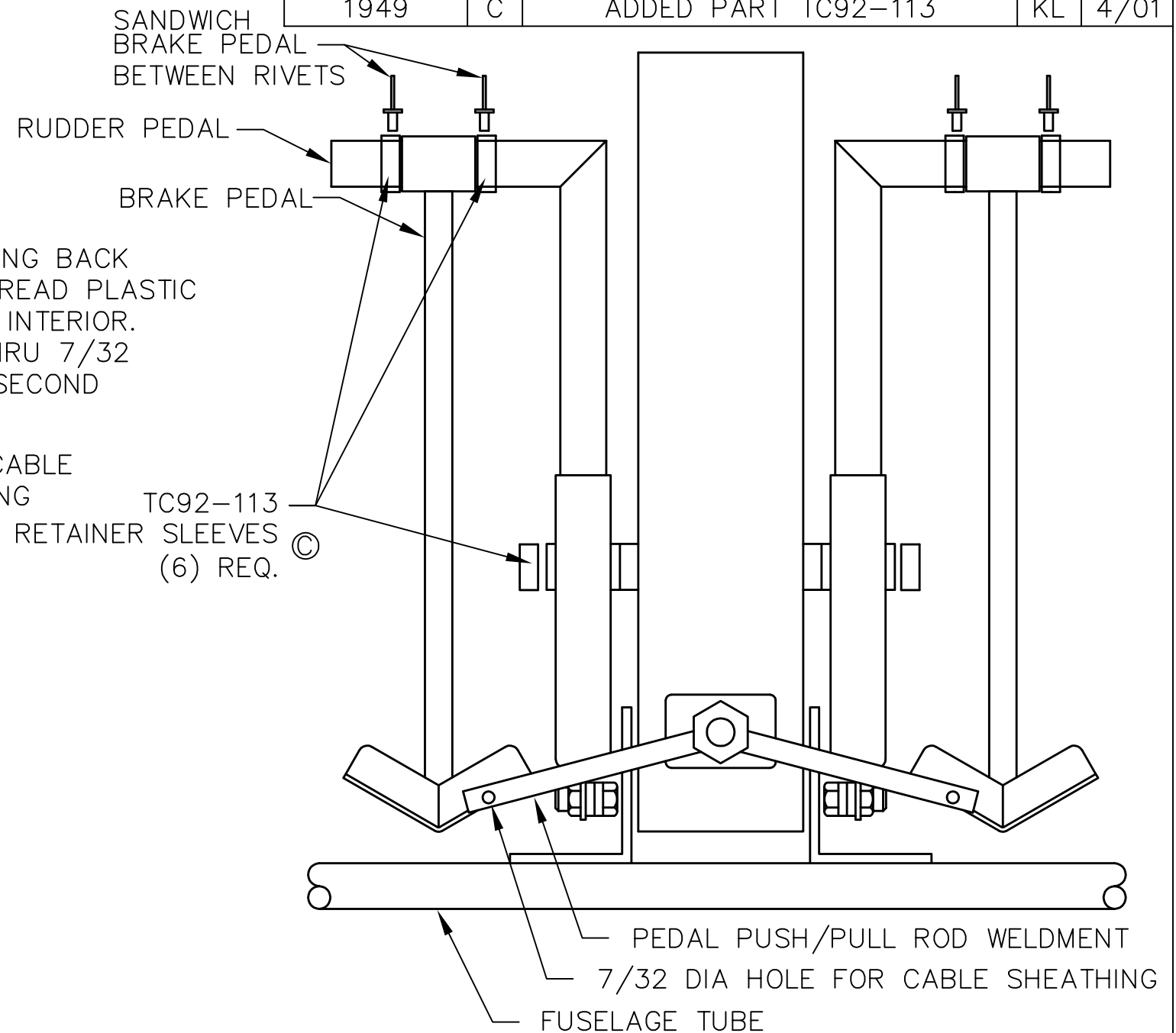
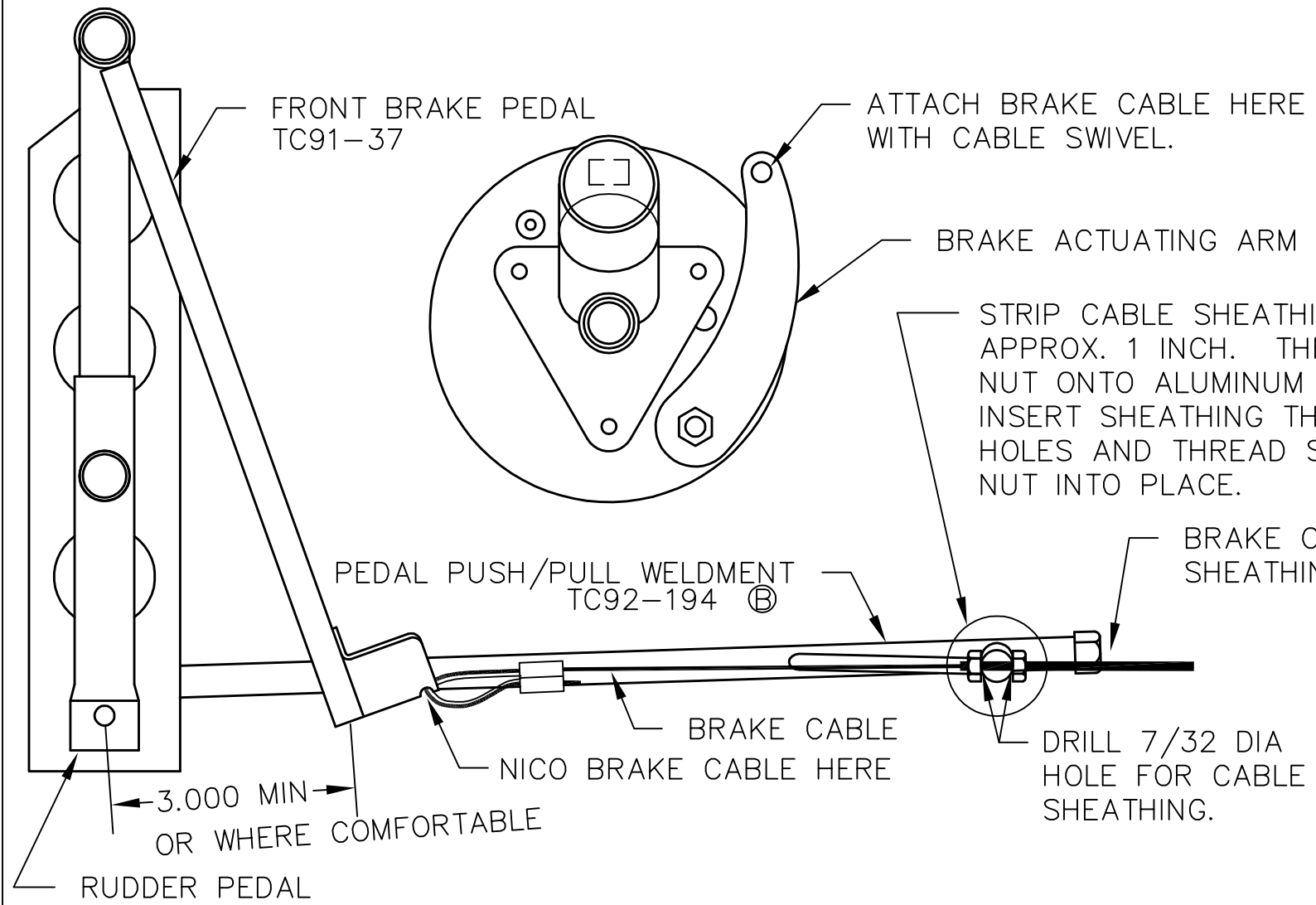


REVISIONS

E.C. NO.	REV.	DESCRIPTION	BY	DATE
1847	B	ADDED PART NUMBERS	KL	3/01
1949	C	ADDED PART TC92-113	KL	4/01



BRAKE CABLE NOTES:

- INSERT BRAKE CABLES INTO CABLE SHEATHING. SEE DRAWING B92-INS-0275 FOR INSTALLATION AND ROUTING.
- NICO PRESS BRAKE CABLE TO BRAKE PEDAL.
- PULL BRAKE CABLE THROUGH SHEATHING UNTIL BRAKE PEDAL IS POSITIONED AS SHOWN.
- ATTACH BRAKE CABLE TO BRAKE ACTUATING ARM WITH A CABLE SWIVEL. KEEP BRAKE PEDAL POSITIONED PROPERLY.
- BOTH BRAKE PEDALS SHOULD BE ALIGNED TOGETHER.

PEDAL ASSEMBLY NOTES:

- ALL DIMENSIONS ARE INCHES.
- POSITION BRAKE PEDALS FOR MOST COMFORTABLE PILOT OPERATION AND CLEARANCE OF RUDDER PEDALS.
- TO HOLD BRAKE PEDALS IN POSITION, SANDWICH THEM BETWEEN (2) SD42BS RIVETS, AS SHOWN (1/8 DIA X 17/64 LONG).
- DRILL RIVET HOLES WITH #30 DRILL (.1285 DIA).

DRAWN J. PRESTON	DATE 3/8/93
CHECKED R. INGLE	DATE 5/1/01
APPROVED J. WILLIAMS	DATE 5/1/01

TITAN AIRCRAFT SUPPLY	
1419 STATE ROUTE 45 SOUTH AUSTINBURG, OHIO 44010	
DETAIL NAME	FORWARD BRAKE PEDAL ASSEMBLY
SCALE	N/A
PART NO.	N/A
ASSEMBLY NAME	ADJUSTABLE PEDAL OPTION
PART NO.	N/A
DRAWING NO.	B 93-INS-0334-C

THIS DOCUMENT PROPRIETARY TO TITAN AIRCRAFT, AND IS NOT TO BE USED, CIRCULATED, REPRODUCED, COPIED, OR DISCLOSED IN ANY MANNER WITHOUT PRIOR WRITTEN PERMISSION OF AN AUTHORIZED OFFICIAL OF TITAN AIRCRAFT.