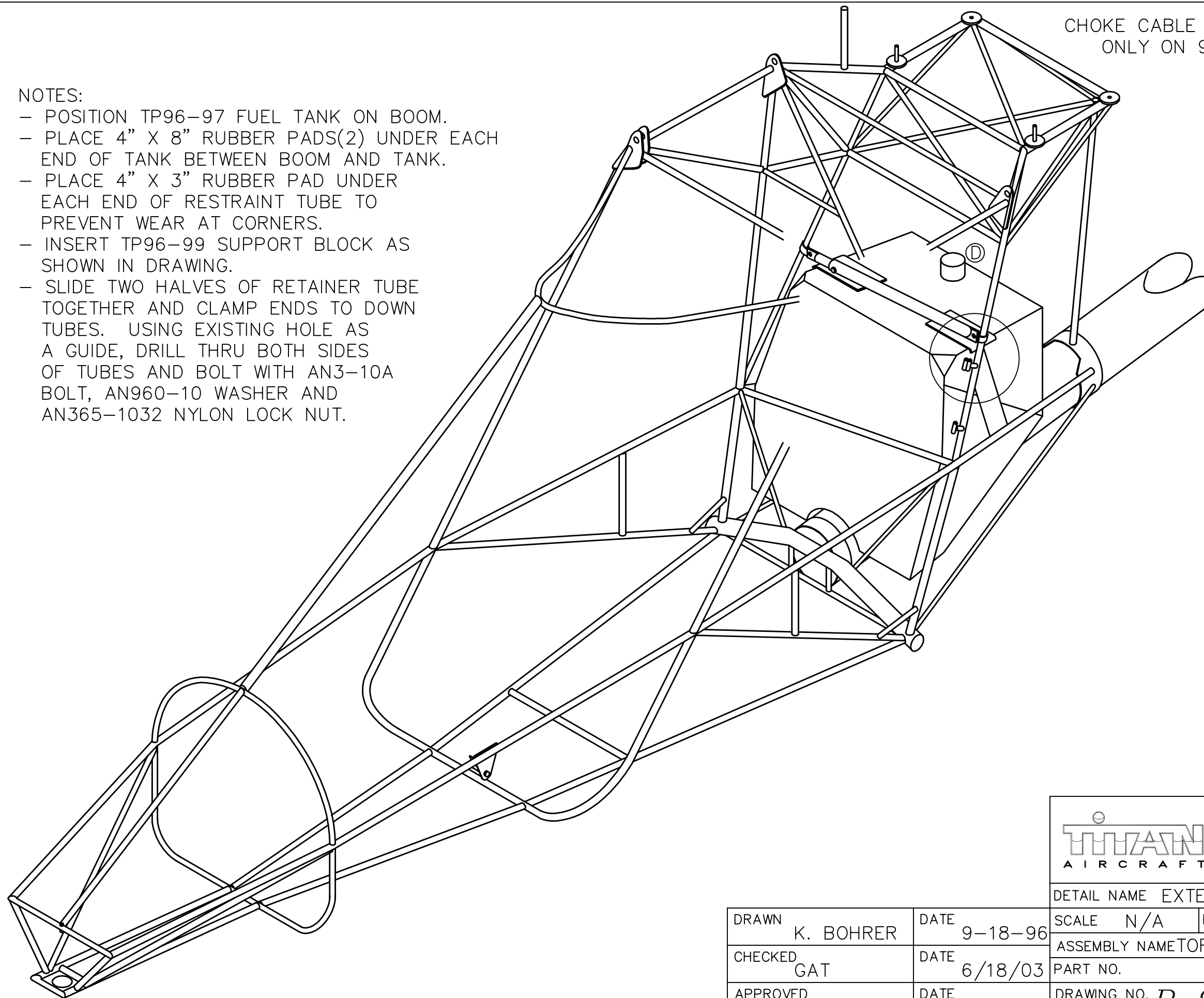
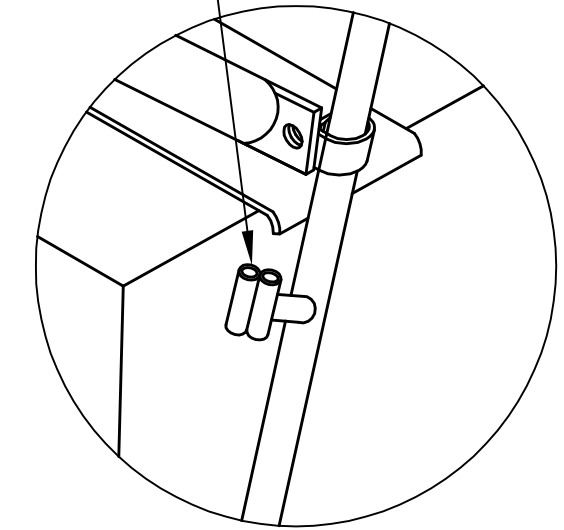


NOTES:

- POSITION TP96-97 FUEL TANK ON BOOM.
- PLACE 4" X 8" RUBBER PADS(2) UNDER EACH END OF TANK BETWEEN BOOM AND TANK.
- PLACE 4" X 3" RUBBER PAD UNDER EACH END OF RESTRAINT TUBE TO PREVENT WEAR AT CORNERS.
- INSERT TP96-99 SUPPORT BLOCK AS SHOWN IN DRAWING.
- SLIDE TWO HALVES OF RETAINER TUBE TOGETHER AND CLAMP ENDS TO DOWN TUBES. USING EXISTING HOLE AS A GUIDE, DRILL THRU BOTH SIDES OF TUBES AND BOLT WITH AN3-10A BOLT, AN960-10 WASHER AND AN365-1032 NYLON LOCK NUT.

CHOKE CABLE STOPS PRESENT ONLY ON 912 FUSELAGE



- TP96-97 EXTENDED RANGE TANK IS HELD IN PLACE BY TP96-98 EXTENDED RANGE TANK RESTRAINT TUBE AND:
- AN3-4A BOLT
 - AN960-10 WASHER
 - AN365-1032 NYLON LOCK NUT
 - MS21919 WDG10(.625 I.D.) ADEL CLAMP OR EQUIVALENT
 - 4" X 3" RUBBER PAD PER SIDE.

THIS DOCUMENT PROPRIETARY TO TITAN AIRCRAFT, AND IS NOT TO BE USED, CIRCULATED, REPRODUCED, COPIED, OR DISCLOSED IN ANY MANNER WITHOUT PRIOR WRITTEN PERMISSION OF AN AUTHORIZED OFFICIAL OF TITAN AIRCRAFT.

TITAN AIRCRAFT SUPPLY
 1419 STATE ROUTE 45 SOUTH
 AUSTINBURG, OHIO 44010

DRAWN K. BOHRER		DATE 9-18-96	SCALE N/A	PART NO.
CHECKED GAT		DATE 6/18/03	ASSEMBLY NAME TORNADO W/ EXTENDED RANGE FUEL TANK	
APPROVED JW		DATE 6/20/03	DRAWING NO. B 96-INS-0741-D	