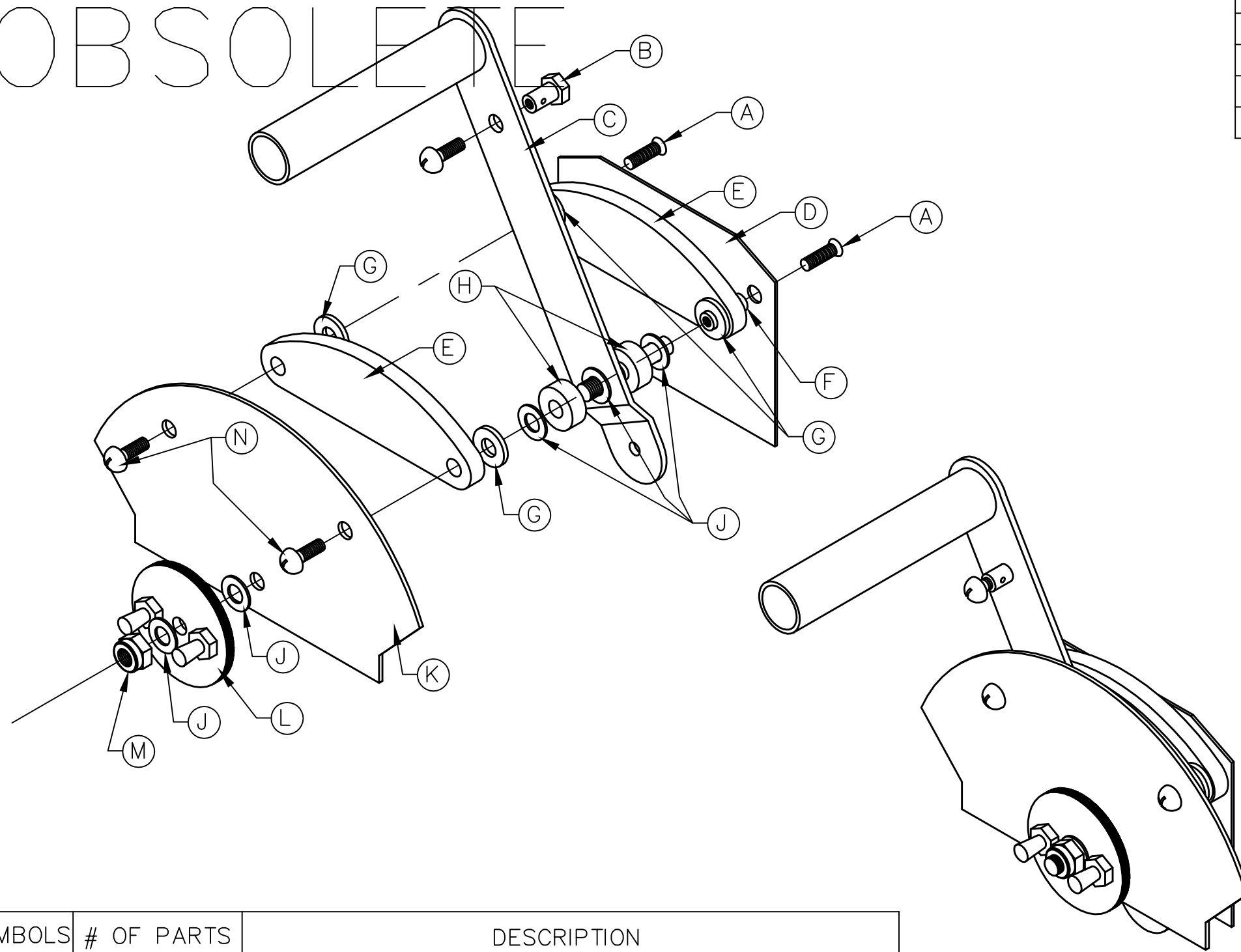


OBSOLETE




REVISIONS				
E.C. NO.	REV.	DESCRIPTION	BY	DATE
	A	DRAWING RELEASED	SH	5/06

NOTE:

- LOCATE BACKING PLATE "D", USE (2) "A" FLAT HEAD SCREWS & (2) "F" THREADED BUSHINGS AND ATTACH TO PART "D". SLIDE AN "E" SPACER OVER BOTH "F" THREADED BUSHINGS.
- TO ADD THROTTLE HANDLE, DO THE FOLLOWING. USE (3) "J" WASHERS, (2) "H" BUSHINGS, AND "C" THROTTLE HANDLE. MOUNT IN ORDER (J,H,C,J,H,J) OVER AN4-17A BOLT WELDED TO BACKING PLATE "D".
- SLIDE (2) "G" WASHERS OVER EACH "F" THREADED BUSHING, THEN SLIDE THE OTHER "E" SPACER OVER BOTH "F" THREADED BUSHINGS.
- ATTACH OUTER COVER "K" TO ASSEMBLY, USING (2) "N" TRUSS HEAD SCREWS THRU THE OUTER COVER HOLES & INTO THE "F" THREADED BUSHINGS.
- TO FINISH ASSEMBLY USE (2) "J" WASHERS, (1) "L" LOCKING KNOB, AND (1) "M" LOCKNUT ONTO THE AN4-17A BOLT. (AS SHOWN TO THE LEFT)

SYMBOLS	# OF PARTS	DESCRIPTION
A	2	8-32 X 1/2" S.S FLAT HEAD SCREW
B	1	CABLE SWIVEL
C	1	THROTTLE CONTROL LEVER ASSEMBLY - MC04-209
D	1	THROTTLE QUADRANT BACKING PLATE ASSEMBLY - MC04-206
E	2	THROTTLE QUADRANT SPACER - B - MC04-211
F	2	THROTTLE QUADRANT THREADED BUSHING - B MC06-280
G	4	AN960-416 WASHER
H	2	THROTTLE QUADRANT SPACER - A - MC04-210
J	5	AN960-416L WASHER
K	1	THROTTLE QUADRANT OUTER COVER - MC04-203
L	1	THROTTLE LOCKING KNOB - MC06-254
M	1	AN365-428 LOCKNUT
N	2	8-32 SS TRUSS HEAD SCREWS

1 REQ'D PER AIRCRAFT	
MATERIAL	AS NOTED
DRAWN S. HENDERSON	DATE 5/12/06
CHECKED MSH	DATE 6/7/06
APPROVED JW	DATE 6/7/06

 TITAN AIRCRAFT SUPPLY 1419 STATE ROUTE 45 SOUTH AUSTINBURG, OHIO 44010	
DETAIL NAME AS NOTED	
SCALE 1"=1"	PART NO. AS NOTED
ASSEMBLY NAME THROTTLE QUADRANT - FWD ASSEMBLY	
PART NO. MC04-224	DRAWING NO. C9
DRAWING NO. B T51-06-INS-1392-A	

THIS DOCUMENT PROPRIETARY TO TITAN AIRCRAFT, AND IS NOT TO BE USED, CIRCULATED, REPRODUCED, COPIED, OR DISCLOSED IN ANY MANNER WITHOUT PRIOR WRITTEN PERMISSION OF AN AUTHORIZED OFFICIAL OF TITAN AIRCRAFT.