

THIS DOCUMENT PROPRIETARY TO TITAN AIRCRAFT, AND IS NOT TO BE USED, CIRCULATED, REPRODUCED, COPIED, OR DISCLOSED IN ANY MANNER WITHOUT PRIOR WRITTEN PERMISSION OF AN AUTHORIZED OFFICIAL OF TITAN AIRCRAFT.

AFT CENTER SECTION SKIN

(2) FUEL CAP

4-40 X 3/8"
FLAT HEAD SLOTTED
(12) MH08-64

8-32 X 3/4"
SHCS BLACK PT
(16) MH09-120

FUEL TANK ALUM. FILLER NECK
(2) MP09-148

FUEL TANK ALUM. FILLER
NECK INTERNAL SUPPORTS
(4) MP09-149

FUEL TANK
(2) MP02-3

O.B.

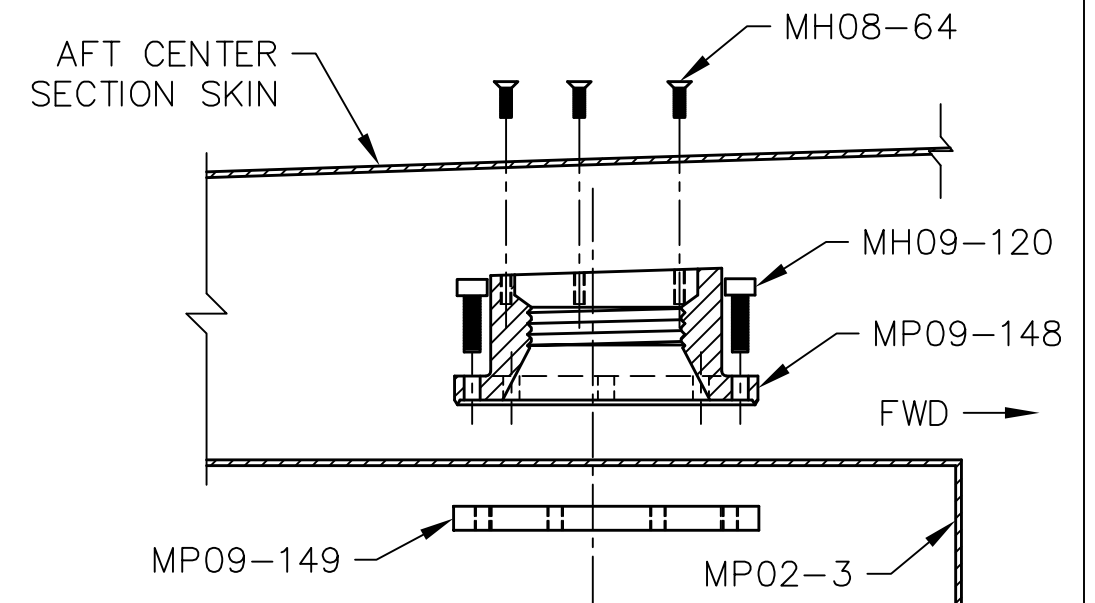
FWD

REVISIONS

| E.C. NO. | REV. | DESCRIPTION | BY | DATE |
|----------|------|------------------|----|------|
| | A | DRAWING RELEASED | SH | 7/09 |

NOTES:

- BE SURE THE FUEL TANKS ARE FIT IN THE CENTER SECTION PRIOR TO INSTALLING THE FUEL FILLER NECKS. (REFER TO DRAWINGS T51-03-INS-0610, T51-03-INS-0609, T51-07-INS-1631, & T51-03-INS-0611.) **DO NOT INSTALL THE VENT LINES ON THE MAIN FUEL TANKS UNTIL FUEL FILLER NECKS ARE POSITIONED.**
- SINCE THE TOP OF THE FUEL TANKS ARE SUNK IN A BIT, IT IS RECOMMENDED TO FILL THE TANKS WITH APPROX. (1 PSI) OF AIR BEFORE ATTEMPTING TO INSTALL THE FUEL FILLER NECKS.
- WITH THE WINGWALK STIFFENERS CLECOED IN PLACE & THE AFT CENTER SECTION SKINS REMOVED, USE A STRAIGHT EDGE TO DETERMINE THE BEST POSITION FOR THE FILLER NECKS. THE FILLER NECKS HAVE A 1/16" LIP ON THE BOTTOM SIDE, THIS NEEDS TO BE ACCOUNTED FOR WHEN INSTALLING THE FILLER NECKS. (THE FILLER NECKS SHOULD DROP 1/16" WHEN THE SCREWS ARE TIGHTENED)



TITAN AIRCRAFT SUPPLY
TITAN AIRCRAFT 1419 STATE ROUTE 45 SOUTH
 AUSTINBURG, OHIO 44010

DETAIL NAME FUEL TANK ALUMINUM FILLER NECK INSTALLATION

| | | | |
|-----------------------|-----------------|--|----------------|
| DRAWN S. HENDERSON | DATE 7/14/09 | SCALE N/A | PART NO. |
| CHECKED R. INGLE | DATE 1/25/10 | ASSEMBLY NAME | |
| APPROVED K. BROOKS | DATE 1/29/10 | PART NO. | DRAWING NO. 07 |
| | | DRAWING NO. B T51-09-INS-1850-A | |