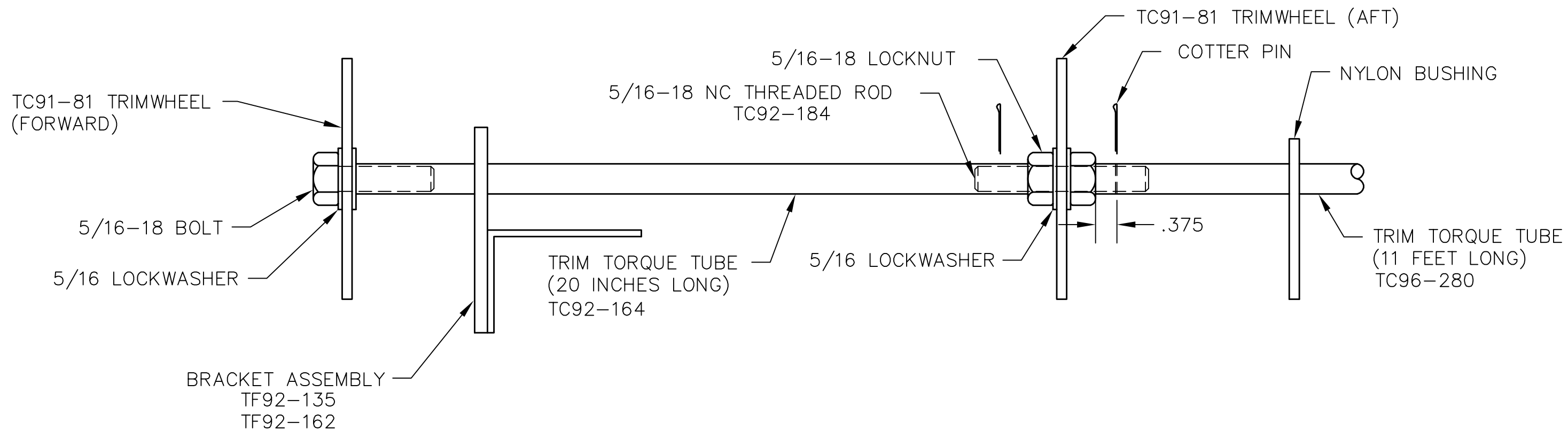


REVISIONS				
E.C. NO.	REV.	DESCRIPTION	BY	DATE
	A	DRAWING RELEASED	JP	12/92
1832	B	ADDED PART NUMBERS	KL	3/01
2171	C	REMOVED PART NUMBER	CE	10/05



**INSTALLATION PROCEDURES:**

- INSERT 11 FOOT LONG TRIM TORQUE TUBE SECTION THRU MAIN CONTROL GUIDE AND TAIL BOOM.
- POSITION 20 INCH LONG SECTION OF TRIM TORQUE TUBE UNDER SEAT FRAME.
- USING BOLT ON THE 20 INCH SECTION, TIGHTEN BOTH TORQUE TUBES TOGETHER.
- POSITION FORWARD TRIMWHEEL FOR SMOOTHEST OPERATION AND WITH ADEQUATE CLEARANCE FROM THE SEAT AND FRAME.
- MOUNT BRACKET ASSEMBLY TO SEAT FRAME TO HOLD TRIMWHEEL IN POSITION. DRILL MOUNTING HOLES WITH #30 DRILL (.1285 DIA) AND RIVET WITH SD42BS RIVETS. (1/8 DIA X 17/64 LONG)

- MOUNT NYLON BUSHING TO AFT TORQUE TUBE MOUNT. DRILL WITH #30 DRILL (.1285 DIA) AND RIVET WITH SD48BS RIVETS. (1/8 DIA X 41/64 LONG)
- ON FINAL ASSEMBLY, LOCTITE BOLT AND THREADED ROD.
- DRILL 1/16 DIA HOLE ON EACH SIDE OF THE AFT TRIMWHEEL. BOTH HOLES ARE TO BE DRILLED THRU THE TORQUE TUBE AND THREADED ROD. INSTALL COTTER PINS INTO BOTH HOLES.


**TITAN AIRCRAFT SUPPLY**  
 1419 STATE ROUTE 45 SOUTH  
 AUSTINBURG, OHIO 44010

DETAIL NAME TRIMWHEEL INSTALLATION PAGE 2 OF 2

DRAWN J. PRESTON	DATE 12/28/92	SCALE N/A	PART NO.
CHECKED GAT	DATE 10/4/05	ASSEMBLY NAME TWO PLACE TORNADOS	
APPROVED JW	DATE 10/5/05	PART NO.	DRAWING NO.
		DRAWING NO. <b>B 92-INS-0228-C</b>	

THIS DOCUMENT PROPRIETARY TO TITAN AIRCRAFT, AND IS NOT TO BE USED, CIRCULATED, REPRODUCED, COPIED, OR DISCLOSED IN ANY MANNER WITHOUT PRIOR WRITTEN PERMISSION OF AN AUTHORIZED OFFICIAL OF TITAN AIRCRAFT.