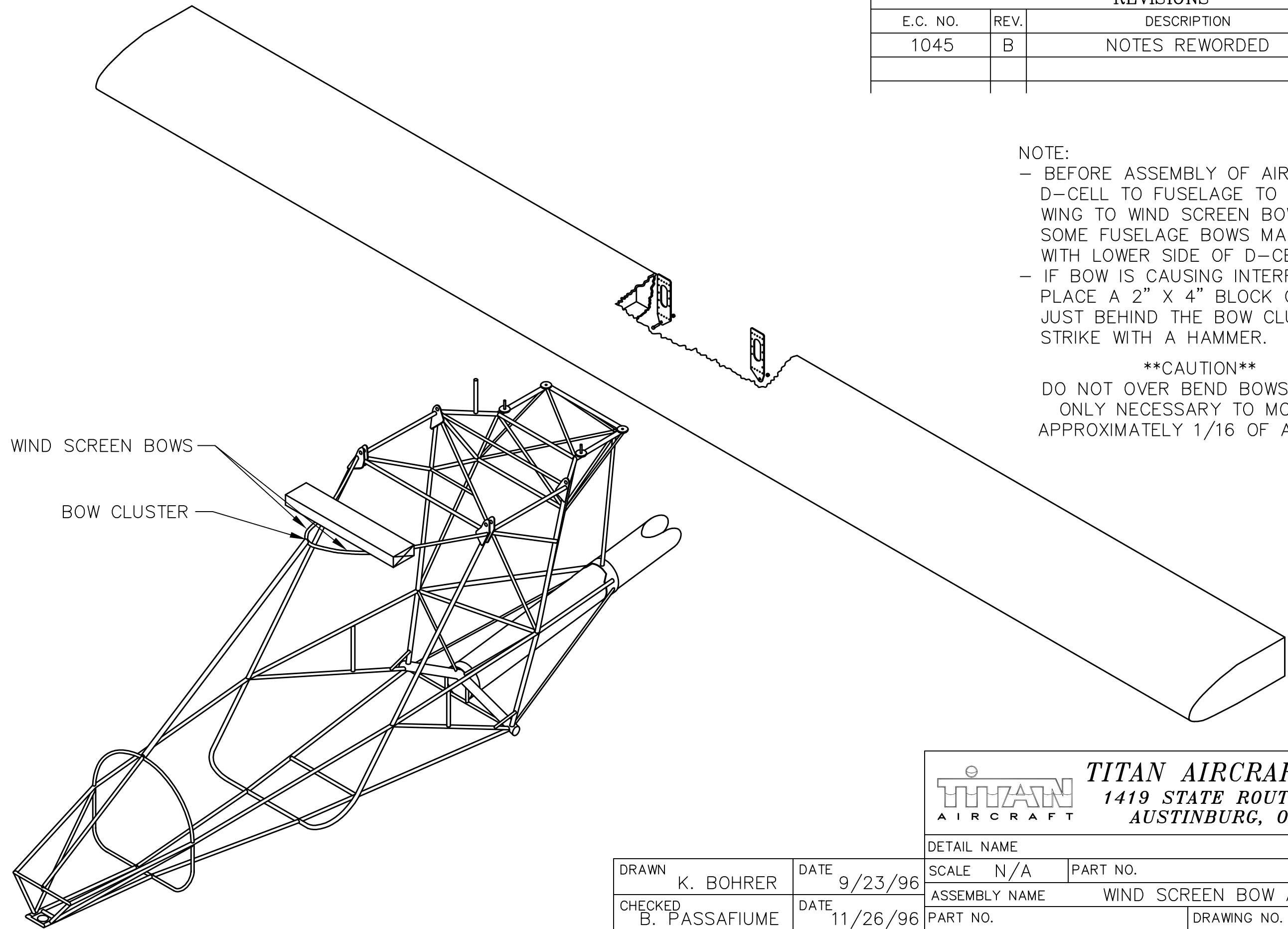


REVISIONS				
E.C. NO.	REV.	DESCRIPTION	BY	DATE
1045	B	NOTES REWORDED	K.B.	11/96



NOTE:

- BEFORE ASSEMBLY OF AIRCRAFT, FIT D-CELL TO FUSELAGE TO CHECK FOR WING TO WIND SCREEN BOW CLEARANCE. SOME FUSELAGE BOWS MAY INTERFERE WITH LOWER SIDE OF D-CELL.
- IF BOW IS CAUSING INTERFERENCE, PLACE A 2" X 4" BLOCK OF WOOD JUST BEHIND THE BOW CLUSTER AND STRIKE WITH A HAMMER.

****CAUTION****

DO NOT OVER BEND BOWS. IT IS ONLY NECESSARY TO MOVE IT APPROXIMATELY 1/16 OF AN INCH.


TITAN AIRCRAFT SUPPLY
 1419 STATE ROUTE 45 SOUTH
 AUSTINBURG, OHIO 44010

DRAWN K. BOHRER		DATE 9/23/96	SCALE N/A	PART NO.
CHECKED B. PASSAFIUME		DATE 11/26/96	ASSEMBLY NAME WIND SCREEN BOW ADJUSTMENT	
APPROVED J. WILLIAMS		DATE 11/26/96	PART NO.	DRAWING NO.
DRAWING NO. <i>B 96-INS-0745-B</i>				

THIS DOCUMENT PROPRIETARY TO TITAN AIRCRAFT, AND IS NOT TO BE USED, CIRCULATED, REPRODUCED, COPIED, OR DISCLOSED IN ANY MANNER WITHOUT PRIOR WRITTEN PERMISSION OF AN AUTHORIZED OFFICIAL OF TITAN AIRCRAFT.