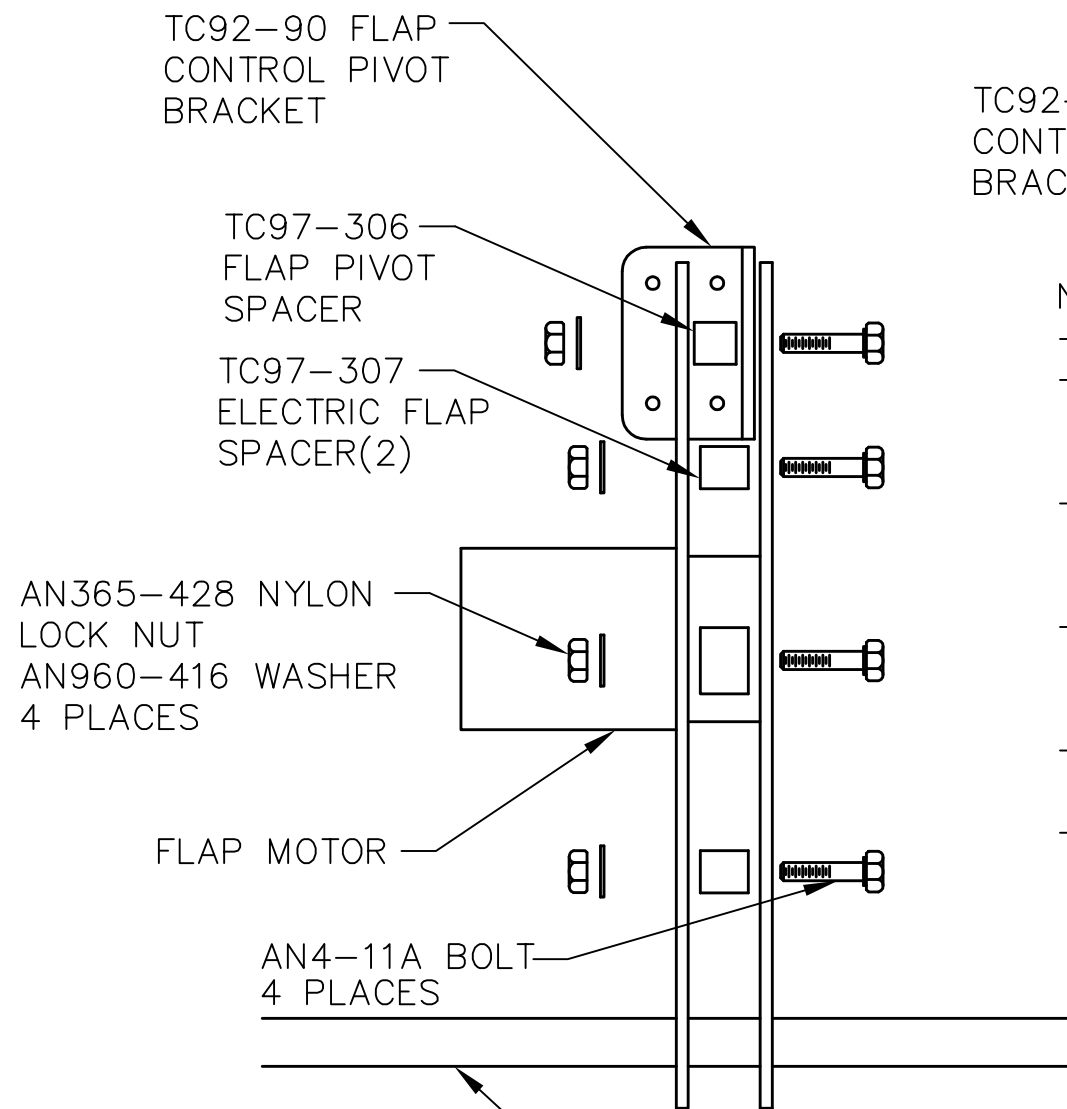
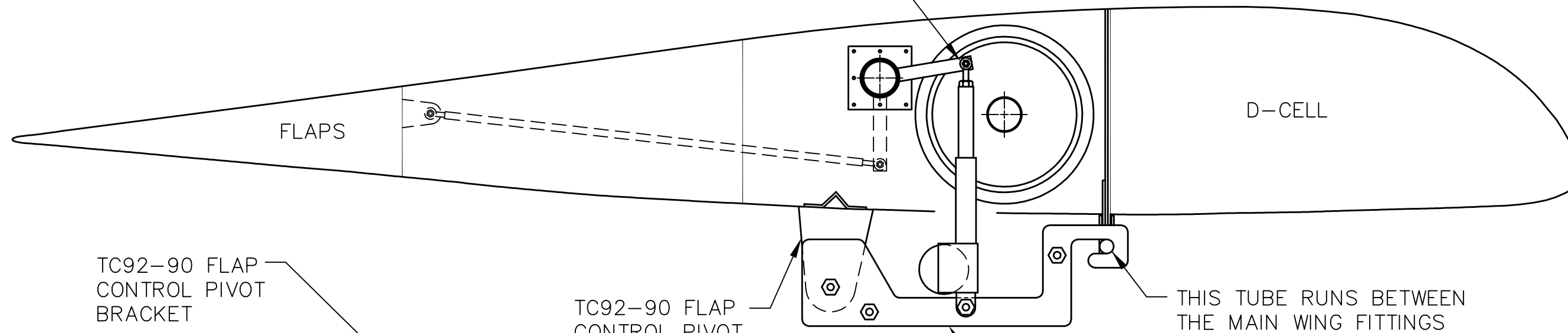


REVISIONS

E.C. NO.	REV.	DESCRIPTION	BY	DATE
1128	B	NOTES CHANGED	K.B.	6/97

LOCKTITE  
 \*\*\*\*JAM NUTS WILL\*\*\*\*  
 \*\*\*UNTHREAD IF NOT\*\*\*  
 \*\*FASTENED SECURELY\*\*



TC92-90 FLAP CONTROL PIVOT BRACKET

TC96-290 ELECTRIC FLAP RETRO-FIT MOTOR MOUNTS

THIS TUBE RUNS BETWEEN THE MAIN WING FITTINGS

NOTES:

- SECURE FLAPS IN NEUTRAL POSITION.
- ATTACH FLAP MOTOR SO THAT IT HANGS FREELY FROM FLAP DRIVER WITH MOTOR PISTON FULLY EXTENDED.
- ATTACH THE HOOKED END OF ONE MOUNT TO THE FUSELAGE TUBE RUNNING BETWEEN MAIN WING FITTINGS.
- MARK PLACE WHERE FLAP MOTOR MOUNTING HOLE AND FLAP PIVOT BRACKET HOLE INTERSECT MOTOR MOUNT.
- REMOVE MOUNT AND DRILL BOTH MOUNTS AT THESE LOCATIONS WITH .250 DRILL.
- USING TC97-306 AND TC97-307 SPACERS, BOLT MOUNTS, PIVOT BRACKET AND FLAP MOTOR TOGETHER WITH AN4-11A BOLT, AN960-416 WASHER AND AN365-428 NYLON LOCK NUT.

THIS TUBE RUNS BETWEEN THE MAIN WING FITTINGS

**TITAN AIRCRAFT SUPPLY**  
 1419 STATE ROUTE 45 SOUTH  
 AUSTINBURG, OHIO 44010

DETAIL NAME		RETRO-FIT ELECTRIC FLAPS INSTALLATION	
SCALE	N/A	PART NO.	
ASSEMBLY NAME		ALL TORNADO WINGS	
PART NO.		DRAWING NO.	
DRAWING NO.		B 97-INS-0860-B	

DRAWN	K. BOHRER	DATE	3/13/97
CHECKED	B. PASSAFIUME	DATE	7/1/97
APPROVED	J. SUTCH	DATE	7/1/97

THIS DOCUMENT PROPRIETARY TO TITAN AIRCRAFT, AND IS NOT TO BE USED, CIRCULATED, REPRODUCED, COPIED, OR DISCLOSED IN ANY MANNER WITHOUT PRIOR WRITTEN PERMISSION OF AN AUTHORIZED OFFICIAL OF TITAN AIRCRAFT.