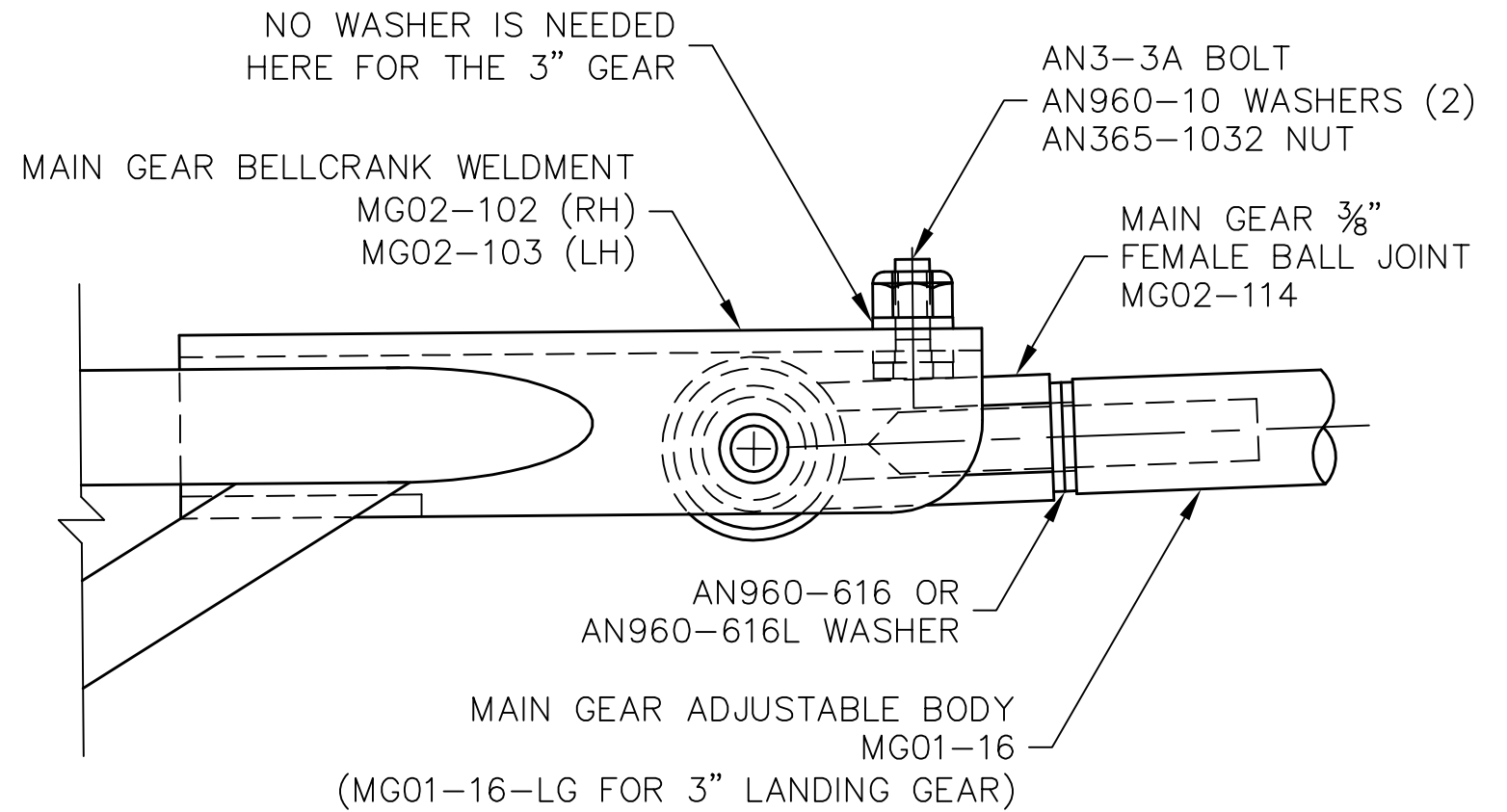
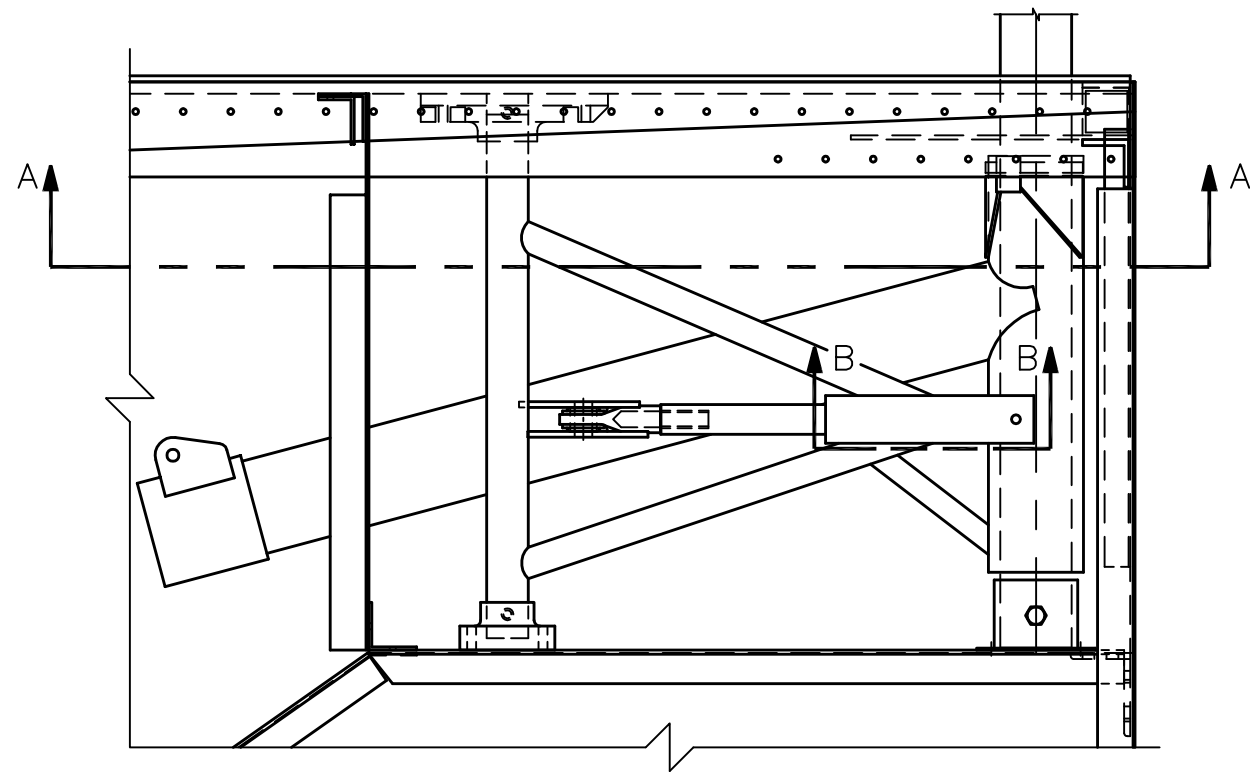
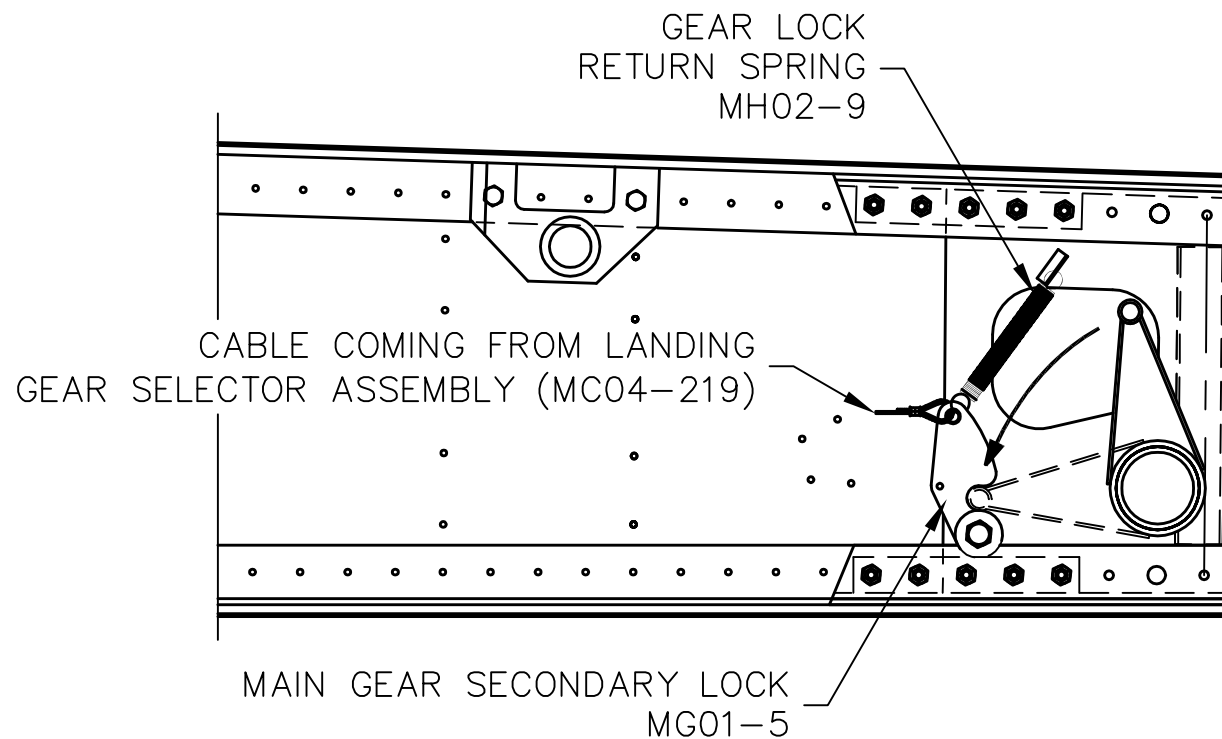


REVISIONS

E.C. NO.	REV.	DESCRIPTION	BY	DATE
0320	B	NOTES ADDED	SH	8/06
0964	C	LARGE GEAR NOTES ADDED	SH	6/09
1182	D	ADDED NOTES	BH	9/15



SECTION B-B - SCALE: FULL



SECTION A-A

NOTES:

- THE MAIN GEAR BELLCRANK (MG02-102 & 103) AND THE MAIN GEAR ADJUSTABLE BODY (MG01-16) ARE THE PRIMARY LOCK FOR EACH MAIN GEAR LEG, BY ALLOWING THE ADJUSTABLE BODY TO GO SLIGHTLY OVERCENTER.
- TO TEST THIS, DISENGAGE THE MAIN GEAR SECONDARY LOCK (MG01-5) AND PUSH IN ON THE GEAR LEG. THE BELLCRANK AND ADJUSTABLE BODY SHOULD NOT COLLAPSE INWARD. IF THEY DO, YOU WILL HAVE TO ADJUST THE ADJUSTABLE BODY'S BALL JOINT BY ADDING OR SUBTRACTING WASHERS TO GET THE ASSEMBLY OVERCENTER.

**TITAN AIRCRAFT SUPPLY**  
 1419 STATE ROUTE 45 SOUTH  
 AUSTINBURG, OHIO 44010

DETAIL NAME MAIN GEAR LOCK ASSEMBLY DETAILS

DRAWN K. LIPLIN	DATE 1/28/04	SCALE 1/4"=1"	PART NO.
CHECKED K. BROOKS	DATE 9/28/15	ASSEMBLY NAME	
APPROVED B. KOLENO	DATE 9/28/15	PART NO.	DRAWING NO. LG4
		DRAWING NO. <b>B T51-03-INS-0599-D</b>	