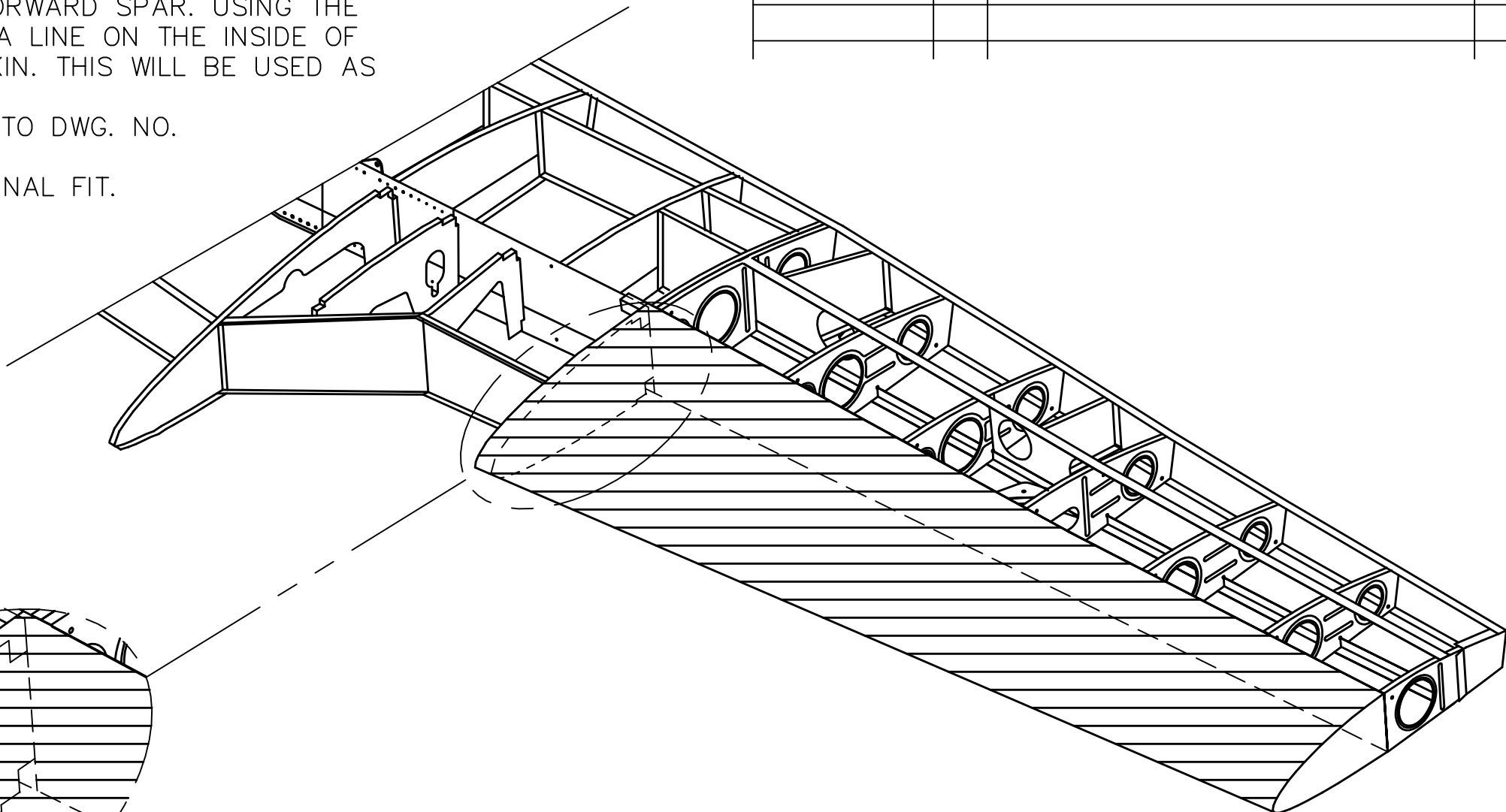


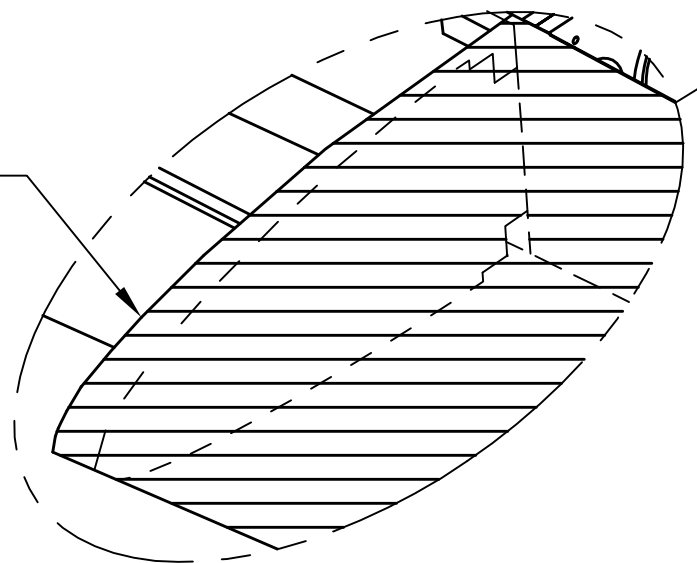
NOTES:

- REMOVE RIB FLANGES FROM INSIDE AND OUTSIDE OF OUTER CENTER SECTION D-CELL #4 RIB.
- ATTACH THE OUTER WING PANEL TO THE CENTER SECTION
- MAKE SURE THE OUTER RIB IS 90° OFF THE FORWARD SPAR. USING THE INSIDE OF THE #4 FWD. RIB AS A GUIDE, TRACE A LINE ON THE INSIDE OF THE OVERLAPPING OUTER WING PANEL D-CELL SKIN. THIS WILL BE USED AS YOUR TRIM LINE.
- REMOVE THE OUTER WING PANEL AND REFER TO DWG. NO. BT51-03-INS-0602.
- IT WILL BE NECESSARY TO SAND EDGES FOR FINAL FIT.

REVISIONS				
E.C. NO.	REV.	DESCRIPTION	BY	DATE
	A	DRAWING RELEASED	KL	2/03



OUTER WING PANEL
D-CELL SKIN
OVERLAPPING CENTER
SECTION OUTER RIB.



SCALE: 1/8"=1"

TITAN AIRCRAFT SUPPLY
1419 STATE ROUTE 45 SOUTH
AUSTINBURG, OHIO 44010

DRAWN K. LIPLIN		DATE 2-5-03	DETAIL NAME
CHECKED GAT		DATE 2-10-03	SCALE 1/16"=1" PART NO.
APPROVED JW		DATE 6-16-03	ASSEMBLY NAME WING SKIN D-CELL FINAL INSTALLATION
			PART NO. DRAWING NO.
			DRAWING NO. B T51-03-INS-0601-A

THIS DOCUMENT PROPRIETARY TO TITAN AIRCRAFT, AND IS NOT TO BE USED, CIRCULATED, REPRODUCED, COPIED, OR DISCLOSED IN ANY MANNER WITHOUT PRIOR WRITTEN PERMISSION OF AN AUTHORIZED OFFICIAL OF TITAN AIRCRAFT.