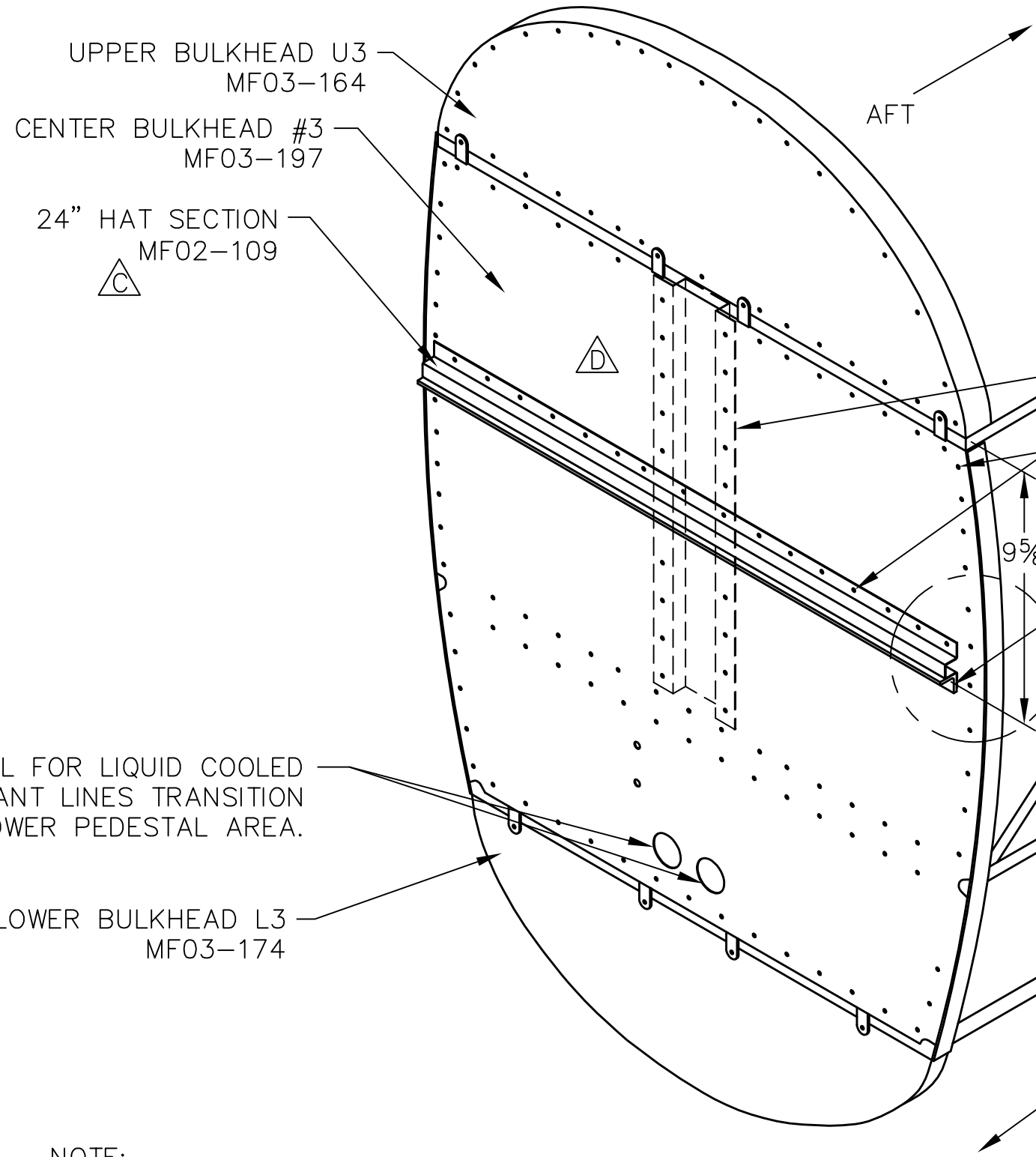


THIS DOCUMENT PROPRIETARY TO TITAN AIRCRAFT, AND IS NOT TO BE USED, CIRCULATED, REPRODUCED, COPIED, OR DISCLOSED IN ANY MANNER WITHOUT PRIOR WRITTEN PERMISSION OF AN AUTHORIZED OFFICIAL OF TITAN AIRCRAFT.

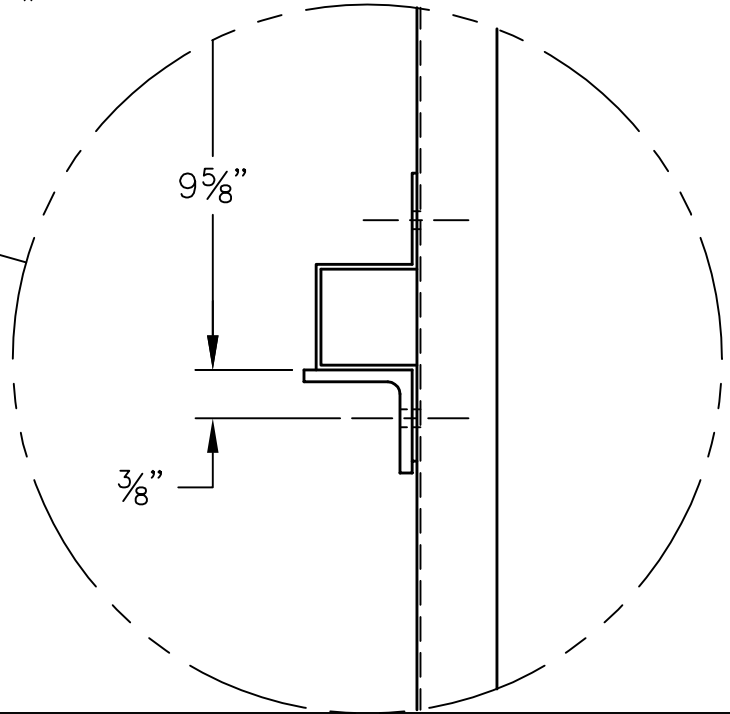
REVISIONS				
E.C. NO.	REV.	DESCRIPTION	BY	DATE
	A	DRAWING RELEASED	BH	7/03
0092	B	ADDED PART CALL OUTS AND DIMS.	CE	5/04
0445	C	NOTES ADDED	SH	3/07
0860	D	RIVET CORRECTED	SH	1/09



NOTE:  
 - SEE DRAWING T51-04-INS-1041 FOR THE INSTALLATION OF CENTER BULKHEAD #3 (MF03-197).  
 - SEE DRAWING T51-05-INS-1184 FOR RUDDER CABLE EYE BOLT INSTALLATION.

HOLES ARE OPTIONAL FOR LIQUID COOLED ENGINES, COOLANT LINES TRANSITION THRU THE LOWER PEDESTAL AREA.

NOTE:  
 - 9 5/8" DIMENSION IS FROM THE TOP CROSS TUBE TO THE TOP OF CENTER BULKHEAD #3 STIFFENER (MF03-198).



**TITAN AIRCRAFT SUPPLY**  
 1419 STATE ROUTE 45 SOUTH  
 AUSTINBURG, OHIO 44010

DETAIL NAME		CENTER BULKHEAD #3 INSTRUCTIONS	
SCALE	N/A	PART NO.	
ASSEMBLY NAME			
PART NO.		DRAWING NO. F6	
DRAWING NO.		B T51-03-INS-0820-D	

DRAWN	B. HODGKINSON	DATE	7/10/03
CHECKED	RI	DATE	2/3/09
APPROVED	KORY B.	DATE	2/3/09