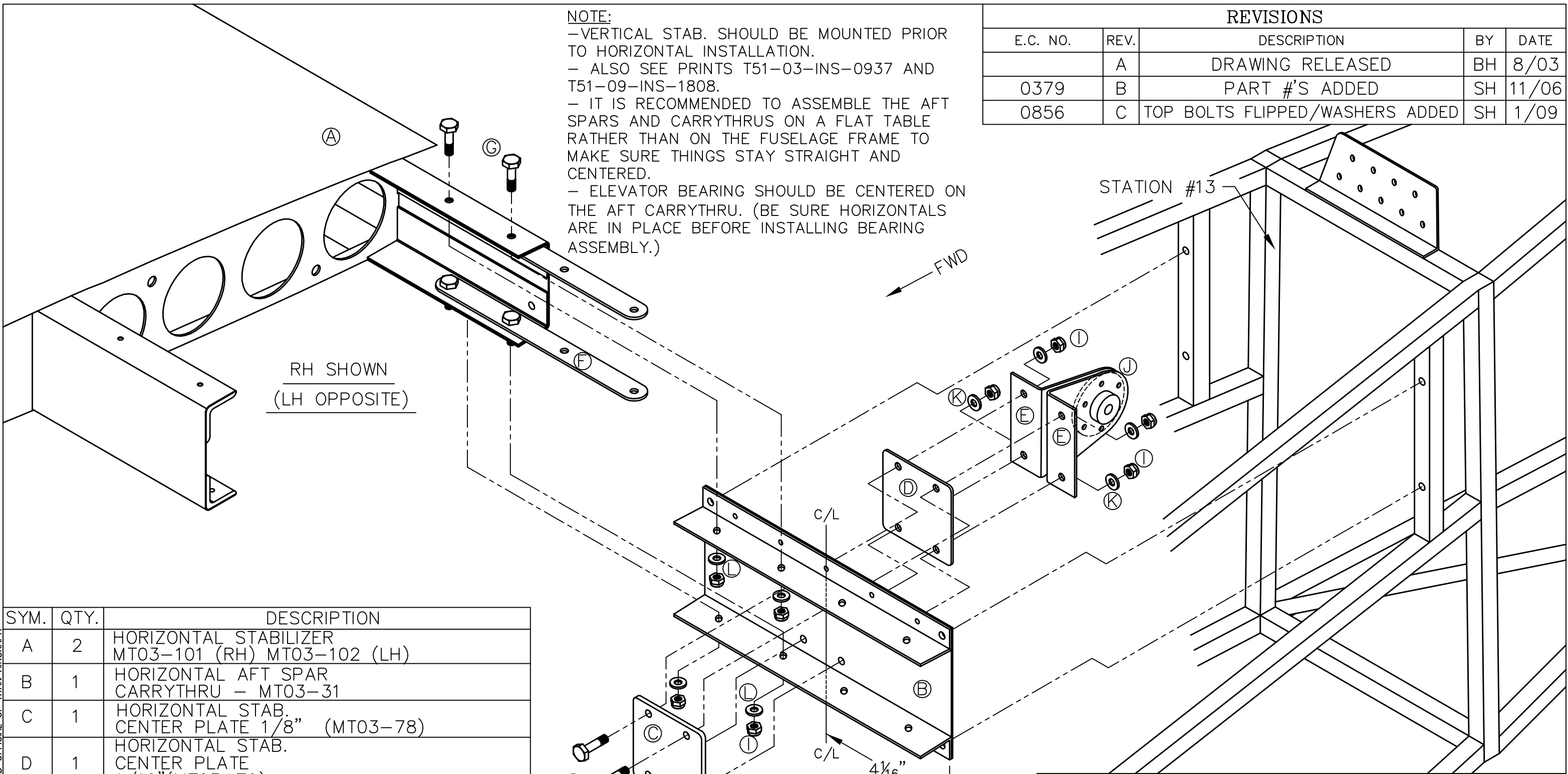


THIS DOCUMENT PROPRIETARY TO TITAN AIRCRAFT, AND IS NOT TO BE USED, CIRCULATED, REPRODUCED, COPIED, OR DISCLOSED IN ANY MANNER WITHOUT PRIOR WRITTEN PERMISSION OF AN AUTHORIZED OFFICIAL OF TITAN AIRCRAFT.

**NOTE:**  
 - VERTICAL STAB. SHOULD BE MOUNTED PRIOR TO HORIZONTAL INSTALLATION.  
 - ALSO SEE PRINTS T51-03-INS-0937 AND T51-09-INS-1808.  
 - IT IS RECOMMENDED TO ASSEMBLE THE AFT SPARS AND CARRYTHRU ON A FLAT TABLE RATHER THAN ON THE FUSELAGE FRAME TO MAKE SURE THINGS STAY STRAIGHT AND CENTERED.  
 - ELEVATOR BEARING SHOULD BE CENTERED ON THE AFT CARRYTHRU. (BE SURE HORIZONTALS ARE IN PLACE BEFORE INSTALLING BEARING ASSEMBLY.)

REVISIONS				
E.C. NO.	REV.	DESCRIPTION	BY	DATE
	A	DRAWING RELEASED	BH	8/03
0379	B	PART #'S ADDED	SH	11/06
0856	C	TOP BOLTS FLIPPED/WASHERS ADDED	SH	1/09



SYM.	QTY.	DESCRIPTION
A	2	HORIZONTAL STABILIZER MT03-101 (RH) MT03-102 (LH)
B	1	HORIZONTAL AFT SPAR CARRYTHRU - MT03-31
C	1	HORIZONTAL STAB. CENTER PLATE 1/8" (MT03-78)
D	1	HORIZONTAL STAB. CENTER PLATE 1/16"(MT03-79)
E	2	ELEVATOR CENTER BEARING (MT01-1)
F	2	HORIZONTAL STAB. AFT CARRY THRU. PLATE(MT03-87)
G	8	AN3-5A BOLT
H	4	AN3-6A BOLT
I	12	AN365-1032 LOCK NUT
J	1	BEARING - MT01-3
K	4	AN960-10 WASHERS
L	8	AN960-10L WASHERS

DRAWN B. HODGKINSON	DATE 8/12/03
CHECKED R. INGLE	DATE 1/25/10
APPROVED K. BROOKS	DATE 1/26/10

**TITAN AIRCRAFT SUPPLY**  
 1419 STATE ROUTE 45 SOUTH  
 AUSTINBURG, OHIO 44010

DETAIL NAME HORIZONTAL STABILIZER INSTALLATION - AFT

SCALE N/A	PART NO.
ASSEMBLY NAME	
PART NO.	DRAWING NO. F35
DRAWING NO. <b>B T51-03-INS-0844-C</b>	