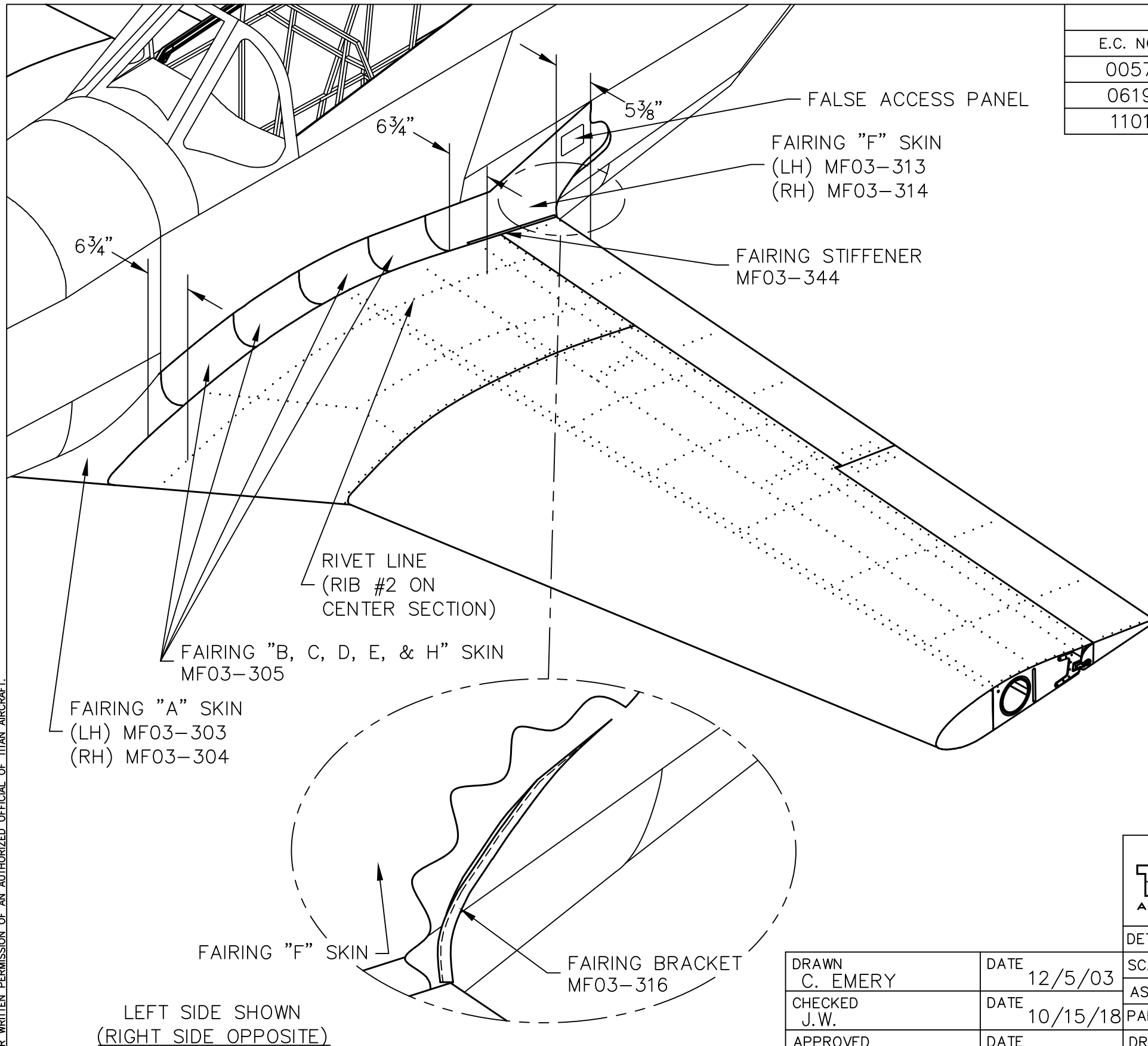



THIS DOCUMENT PROPRIETARY TO TITAN AIRCRAFT, AND IS NOT TO BE USED, CIRCULATED, REPRODUCED, COPIED, OR DISCLOSED IN ANY MANNER WITHOUT PRIOR WRITTEN PERMISSION OF AN AUTHORIZED OFFICIAL OF TITAN AIRCRAFT.



REVISIONS				
E.C. NO.	REV.	DESCRIPTION	BY	DATE
0057	B	ADDED FAIRING STIFFENER	CE	12/03
0619	C	NOTES ADDED	SH	2/08
1101	D	CORRECTED PART NUMBER	BH	10/10

- NOTES:**
- TRIM AND FIT THE FAIRINGS "B, C, D, & E" FROM PART NUMBER MF03-305.
 - ALL FAIRING SKINS OVERLAP EACH AFT FAIRING SKIN.
 - THE FAIRING "F" SKIN (MF03-313 & 314) NEEDS TO BE CLECOED IN PLACE FIRST TO GET THE RIGHT ALIGNMENT.
 - MEASURE 6 3/4" FROM RIVET LINE ON RIB #2 IN THE CENTER SECTION TO PLACE FAIRING SKINS "A"- "E".
 - THE FAIRING "F" SKIN WILL MEASURE 6 3/4" AT THE FORWARD CORNER AND 5 3/8" FROM WHERE IT FIRST MEETS THE FLAP.
 - USE A STRAIGHT EDGE TO EXTEND THE REFERENCE LINE ONTO THE FLAPS.
 - THE FAIRING "A" SKIN (MF03-303 & 304) WILL WRAP COMPLETELY AROUND TO THE BOTTOM OF THE WING, SEE DRAWING T51-03-INS-0962.
 - THE FAIRING BRACKET (MF03-316) IS USED TO HOLD THE FAIRING "F" AND "G" SKINS TOGETHER AT THE TRAILING EDGE, WHICH ALSO ACTS AS A STIFFENER.
 - THE RIVET LINES SHOWN ARE NOT EXACT, BUT ARE A GOOD REFERENCE OF THE LAYOUT.
 - ALSO REFER TO DRAWING T51-03-INS-0991 FOR FAIRING "F" & FAIRING "G" INSTALLATION.

 TITAN AIRCRAFT SUPPLY 1419 STATE ROUTE 45 SOUTH AUSTINBURG, OHIO 44010	
DETAIL NAME WING FAIRING LOCATION	
SCALE 1/16"=1"	PART NO.
ASSEMBLY NAME	
PART NO.	DRAWING NO. CS20
DRAWING NO. B T51-03-INS-0961-D	

DRAWN C. EMERY	DATE 12/5/03
CHECKED J.W.	DATE 10/15/18
APPROVED	DATE