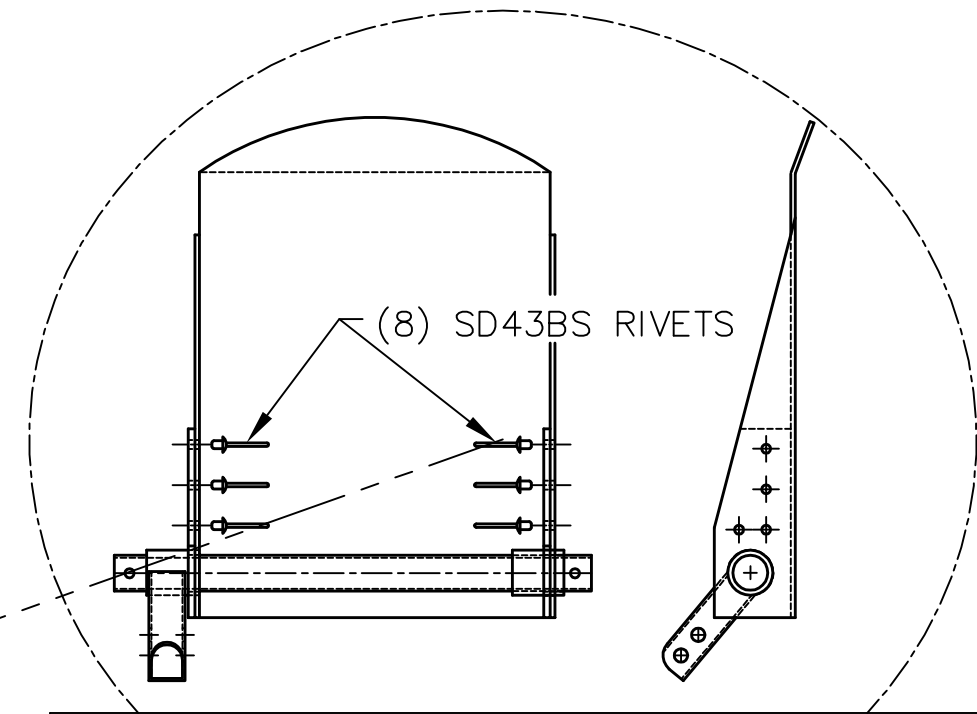
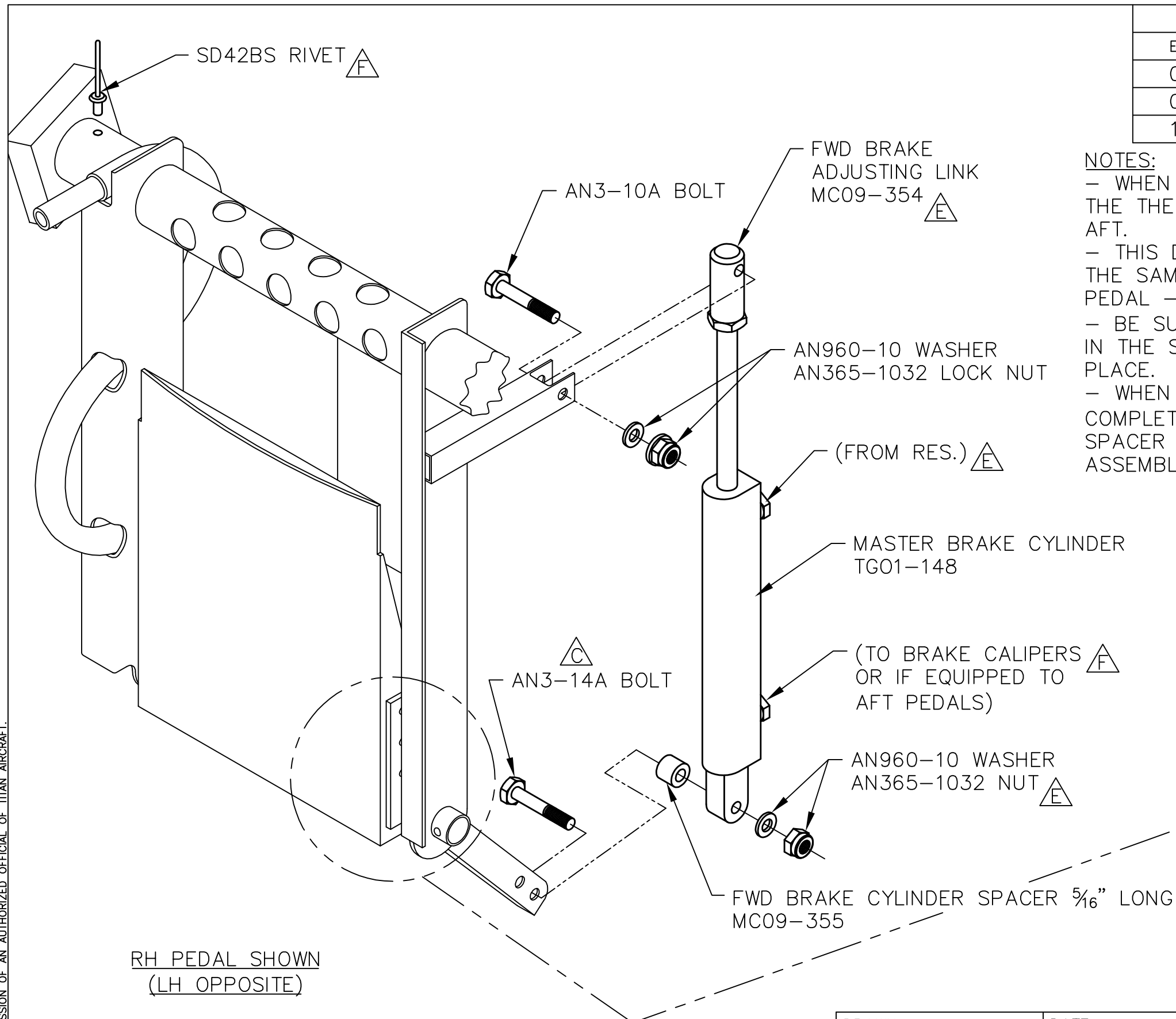


REVISIONS

| E.C. NO. | REV. | DESCRIPTION | BY | DATE |
|----------|------|-----------------------|----|------|
| 0603 | D | ROTATED CYLINDER 180° | SH | 1/08 |
| 0907 | E | ROTATED CYLINDER 180° | SH | 3/09 |
| 1068 | F | ADDED STEEL RIVET | BH | 6/10 |

NOTES:

- WHEN MOUNTING THE BRAKE MASTER CYLINDER, MAKE SURE THE THE HYDRAULIC BRAKE LINE CONNECTIONS ARE FACING AFT.
- THIS DRAWING REPRESENTS THE FWD BRAKE PEDAL - RH, THE SAME INSTALLATION WILL BE USED FOR THE FWD BRAKE PEDAL - LH.
- BE SURE EACH FWD RUDDER PEDAL HAS (8) SD43BS RIVETS IN THE SIDE MOUNTS AS SHOWN BELOW. BOND AND RIVET IN PLACE.
- WHEN BRAKE CYLINDER MOUNTING AND PEDAL ASSEMBLY IS COMPLETE, DRILL #30 (Ø.1285) HOLE THROUGH THE ALUMINUM SPACER AND STEEL CROSS TUBE ON BOTH ENDS OF THE ASSEMBLY. USE SD42BS RIVETS TO SECURE IN PLACE.



RH PEDAL SHOWN
(LH OPPOSITE)

TITAN AIRCRAFT SUPPLY
 1419 STATE ROUTE 45 SOUTH
 AUSTINBURG, OHIO 44010

| | | | |
|---------------|---------|------------------------------------|--|
| DETAIL NAME | | MASTER BRAKE CYLINDER INSTALLATION | |
| SCALE | 1/2"=1" | PART NO. | |
| ASSEMBLY NAME | | | |
| PART NO. | | DRAWING NO. F21 | |
| DRAWING NO. | | B T51-03-INS-1005-F | |

| | | | |
|----------|-----------|------|---------|
| DRAWN | C. EMERY | DATE | 1/19/04 |
| CHECKED | R. INGLE | DATE | 6/21/10 |
| APPROVED | K. BROOKS | DATE | 6/21/10 |

THIS DOCUMENT PROPRIETARY TO TITAN AIRCRAFT, AND IS NOT TO BE USED, CIRCULATED, REPRODUCED, COPIED, OR DISCLOSED IN ANY MANNER WITHOUT PRIOR WRITTEN PERMISSION OF AN AUTHORIZED OFFICIAL OF TITAN AIRCRAFT.