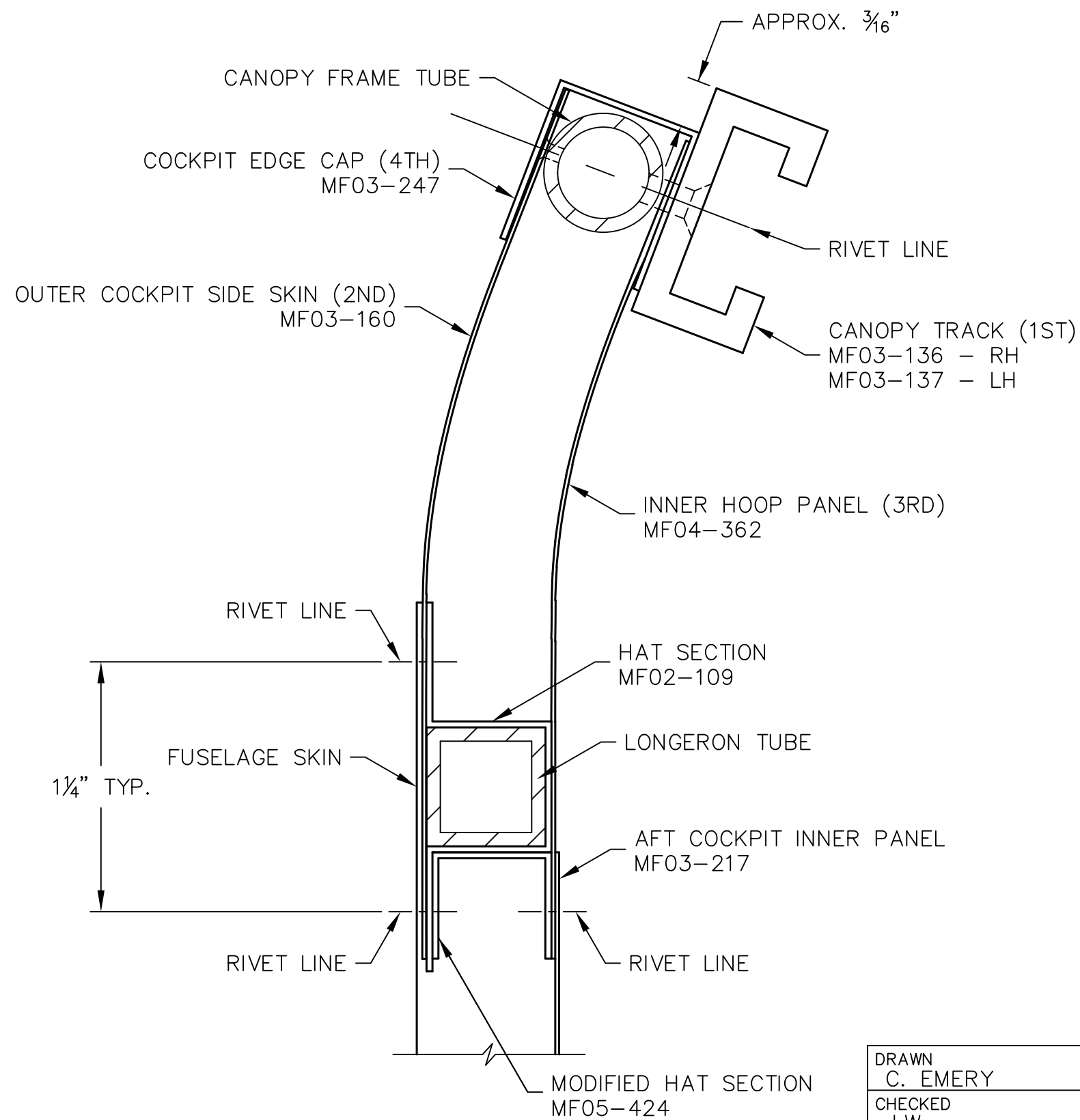


THIS DOCUMENT PROPRIETARY TO TITAN AIRCRAFT, AND IS NOT TO BE USED, CIRCULATED, REPRODUCED, COPIED, OR DISCLOSED IN ANY MANNER WITHOUT PRIOR WRITTEN PERMISSION OF AN AUTHORIZED OFFICIAL OF TITAN AIRCRAFT.



REVISIONS

E.C. NO.	REV.	DESCRIPTION	BY	DATE
0686	D	HAT SECTION REMOVED	SH	5/08
0916	E	NOTES ADDED	SH	3/09
1154	F	CHANGED RIVET NOTE	BH	2/13

NOTES:

- REFER TO DRAWINGS T51-03-INS-0649, T51-07-INS-1633, T51-07-INS-1634, & T51-07-INS-1681 FOR MORE DETAILS ON CANOPY TRACK AND PANEL INSTALLATION.
- THE CANOPY TRACKS SHOULD BE CENTERED ON THE STEEL HOOP AND MATCH DRILLED FIRST.
- DURING FINAL ASSEMBLY USE SK44BS RIVETS TO ATTACH THE CANOPY TRACKS IN PLACE.



TITAN AIRCRAFT SUPPLY
1419 STATE ROUTE 45 SOUTH
AUSTINBURG, OHIO 44010

DETAIL NAME		COCKPIT SKIN SECTIONAL	
SCALE	2"=1"	PART NO.	
ASSEMBLY NAME			
PART NO.	DRAWING NO.		F27
DRAWING NO.		<i>B T51-04-INS-1037-F</i>	

DRAWN C. EMERY	DATE 1/28/04
CHECKED J.W.	DATE 10/15/18
APPROVED	DATE