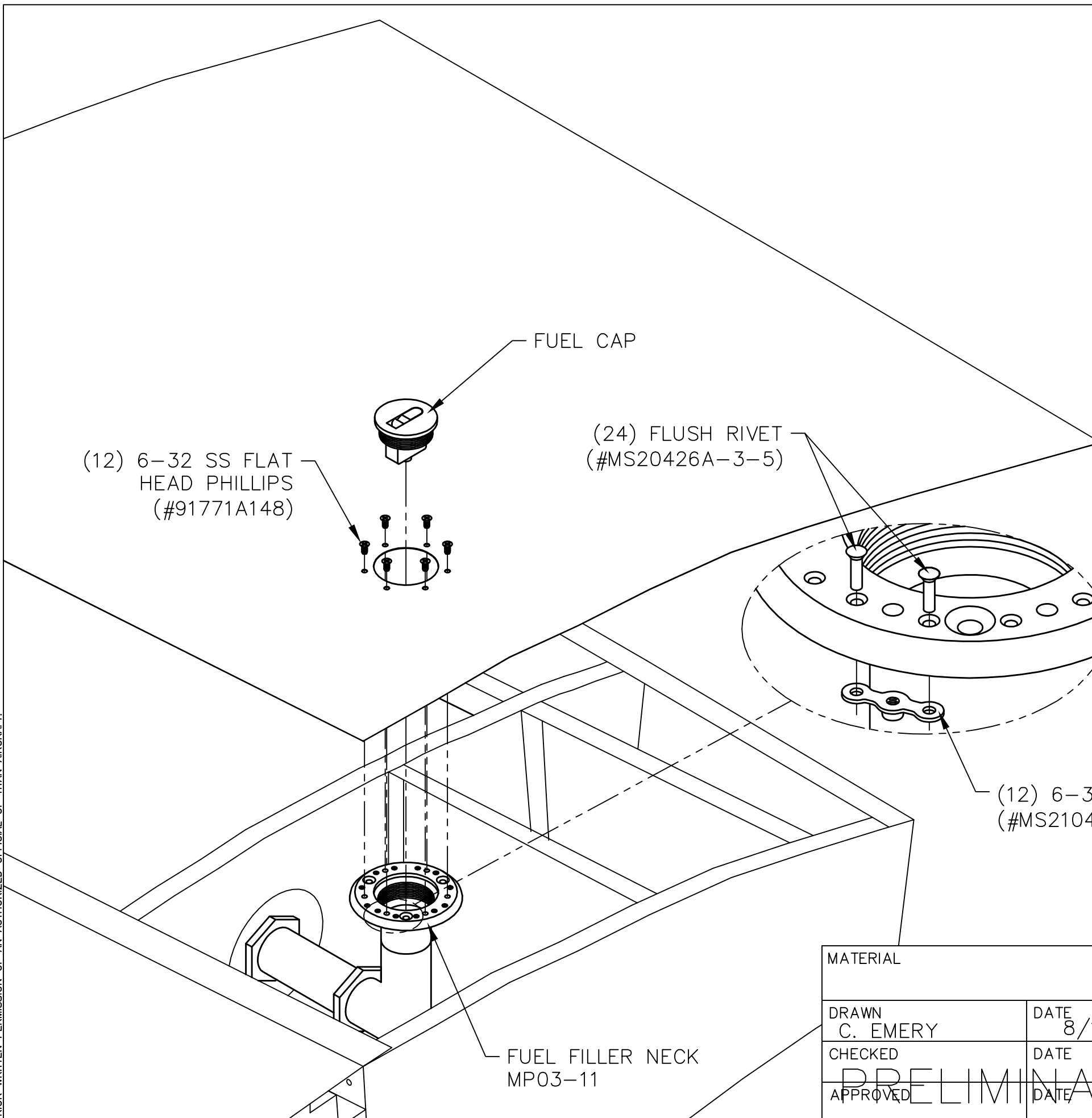


REVISIONS

E.C. NO.	REV.	DESCRIPTION	BY	DATE
	A	DRAWING RELEASED	CE	8/04
0382	B	ADDED PART #'S	SH	12/06

NOTE:

- ADJUST THE FUEL FILLER NECK WITH THE CAP ON AND BE SURE THAT THE FINGER TAB IS IN LINE WITH THE SLIP STREAM WHEN TIGHT AS SHOWN IN DRAWING.
- TO LOCATE THE HOLE FOR THE FUEL FILLER WITH THE FUEL FILLER NECK PLUMBING IN PLACE TAKE DIMENSIONS FOR THE CENTER OF THE NECK AND TRANSFER ONTO THE AFT CENTER SECTION SKIN.
- CUT A HOLE SLIGHTLY LARGER THAN THE RED FUEL CAP TO ALLOW FOR CLEARANCE. (DO NOT MAKE THIS HOLE ANY LARGER THAN NECESSARY.)
- CENTER FUEL FILLER NECK AND FLANGE ASSEMBLY OVER THE HOLE. ON THE BOTTOM SIDE OF THE SKIN, USING THE HOLES IN THE FLANGE AS A GUIDE, MARK AND DRILL THE MOUNTING HOLES FOR THE #6-32 CS-SS SCREWS. (THESE HOLES WILL BE USED FOR MOUNTING THE FLANGE TO THE BOTTOM SIDE OF THE SKIN.) NOTE: FLANGE IS MOUNTED ON BOTTOM SIDE OF SKIN.
- ATTACH THE NUT PLATES TO THE FILLER NECK WITH FLUSH RIVETS.
- REATTACH THE FILLER NECK TO THE REST OF THE PLUMBING AND SECURE.
- PLACE SKIN IN PLACE AND ATTACH IT TO THE FILLER NECK USING #6-32 CS-SS SCREWS MAKING SURE THE FINGER TAB IS STILL IN LINE WITH THE SLIP STREAM WHEN FUEL CAP IS TIGHT.



**TITAN AIRCRAFT SUPPLY**  
 1419 STATE ROUTE 45 SOUTH  
 AUSTINBURG, OHIO 44010

TITAN AIRCRAFT

DETAIL NAME FUEL FILLER NECK ATTACHMENT INSTRUCTIONAL  
 SCALE 1/4"=1" PART NO. N/A  
 ASSEMBLY NAME  
 PART NO. DRAWING NO.  
 DRAWING NO. **B T51-04-INS-1089-B**

MATERIAL	
DRAWN C. EMERY	DATE 8/17/04
CHECKED	DATE
APPROVED	DATE

PRELIMINARY

THIS DOCUMENT PROPRIETARY TO TITAN AIRCRAFT, AND IS NOT TO BE USED, CIRCULATED, REPRODUCED, COPIED, OR DISCLOSED IN ANY MANNER WITHOUT PRIOR WRITTEN PERMISSION OF AN AUTHORIZED OFFICIAL OF TITAN AIRCRAFT.