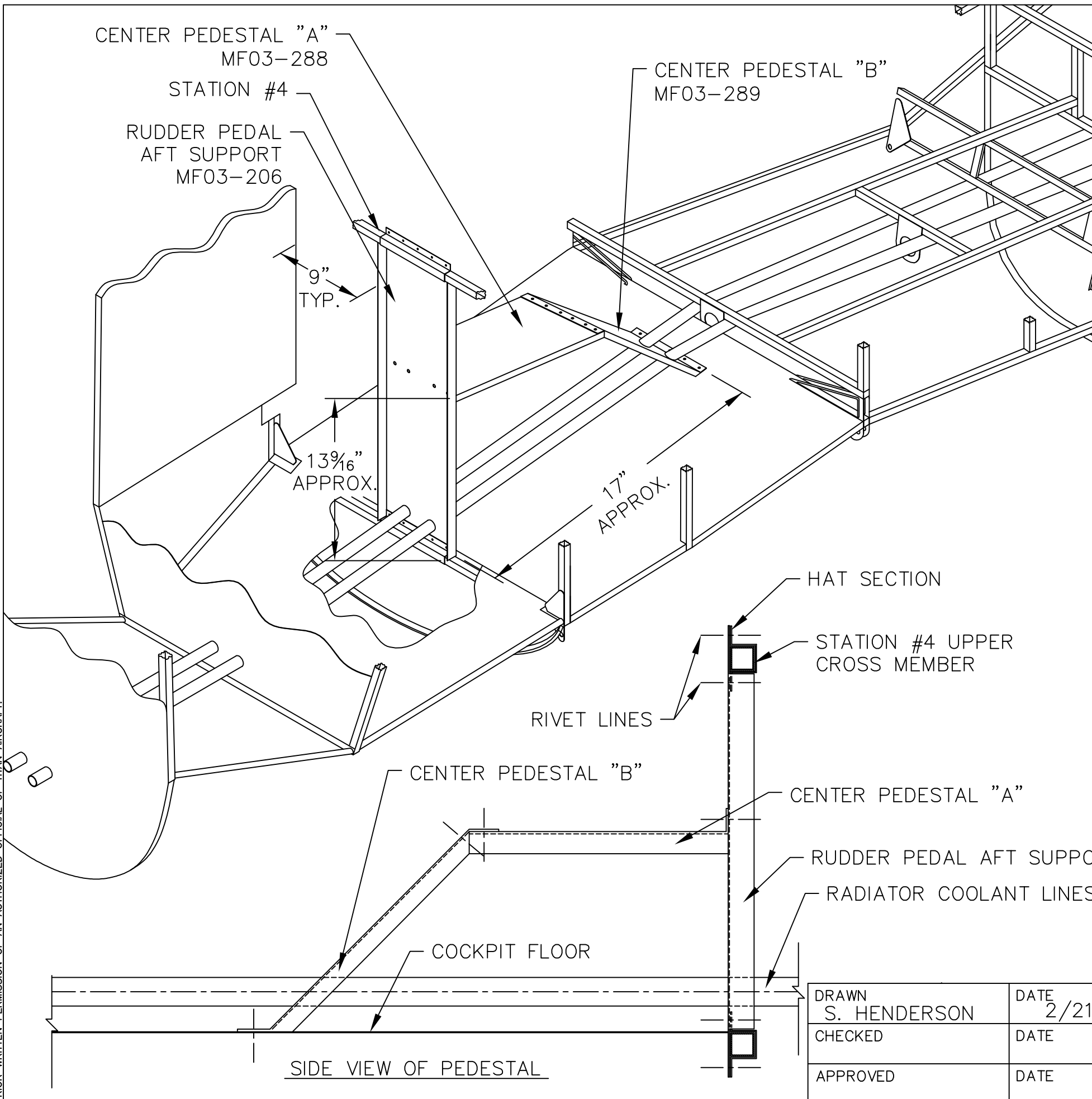


THIS DOCUMENT PROPRIETARY TO TITAN AIRCRAFT, AND IS NOT TO BE USED, CIRCULATED, REPRODUCED, COPIED, OR DISCLOSED IN ANY MANNER WITHOUT PRIOR WRITTEN PERMISSION OF AN AUTHORIZED OFFICIAL OF TITAN AIRCRAFT.



REVISIONS				
E.C. NO.	REV.	DESCRIPTION	BY	DATE
	A	DRAWING RELEASED	SH	2/06
0941	B	DIMENSION CHANGED	SH	4/09

**NOTES:**

- THE RUDDER PEDAL AFT SUPPORT (MF03-206) IS ATTACHED IN THE MIDDLE OF STATION #4 APPROX. 9" FROM EACH SIDE WALL BETWEEN THE UPPER AND LOWER CROSS MEMBERS. YOU WILL NEED TWO PIECES OF 5<sup>3</sup>/<sub>4</sub>" HAT SECTION FOR MOUNTING OF RUDDER PEDAL AFT SUPPORT. ONE PIECE OF THE HAT SECTION WILL BE ADDED TO THE UPPER CROSS MEMBER AND THE OTHER ON THE LOWER, BOTH WILL NEED TO BE ON THE FWD SIDE OF THE RUDDER PEDAL AFT SUPPORT. BOND THE HAT SECTIONS TO THE CROSS MEMBERS, THEN BOND AND RIVET HAT SECTIONS TO THE RUDDER PEDAL AFT SUPPORT. DRILL OUT TWO HOLES ON LOWER SIDE OF RUDDER PEDAL AFT SUPPORT FOR RADIATOR COOLANT LINES.
- BOND AND RIVET PEDESTAL "A" TO PEDESTAL "B" WITH SD42BS RIVETS.
- ARRANGE INSTRUMENTS, VALVES, ETC. ON PEDESTAL "B" TO YOUR PERSONAL PREFERENCE, DRILL OUT TWO HOLES ON THE LOWER SIDE OF PEDESTAL "B" FOR RADIATOR COOLANT LINES.
- ONCE ALL INSTRUMENTS, VALVES, ETC. ARE IN PLACE ON PEDESTAL "B", BOND AND RIVET (SD42BS) THE FLANGE ON PEDESTAL "A" TO THE RUDDER PEDAL AFT SUPPORT APPROX. 13<sup>9</sup>/<sub>16</sub>" UP FROM THE COCKPIT FLOOR, ALSO BOND AND RIVET THE FLANGE ON PEDESTAL "B" TO THE COCKPIT FLOOR, APPROX. 17" AFT OF THE RUDDER PEDAL AFT SUPPORT.

**TITAN AIRCRAFT SUPPLY**  
 1419 STATE ROUTE 45 SOUTH  
 AUSTINBURG, OHIO 44010

DETAIL NAME		CENTER PEDESTAL INSTRUCTIONAL	
SCALE	N/A	PART NO.	
ASSEMBLY NAME			
PART NO.		DRAWING NO. F22	
DRAWING NO. <b>B T51-06-INS-1325-B</b>			

DRAWN	S. HENDERSON	DATE	2/21/06
CHECKED		DATE	
APPROVED		DATE	

SIDE VIEW OF PEDESTAL