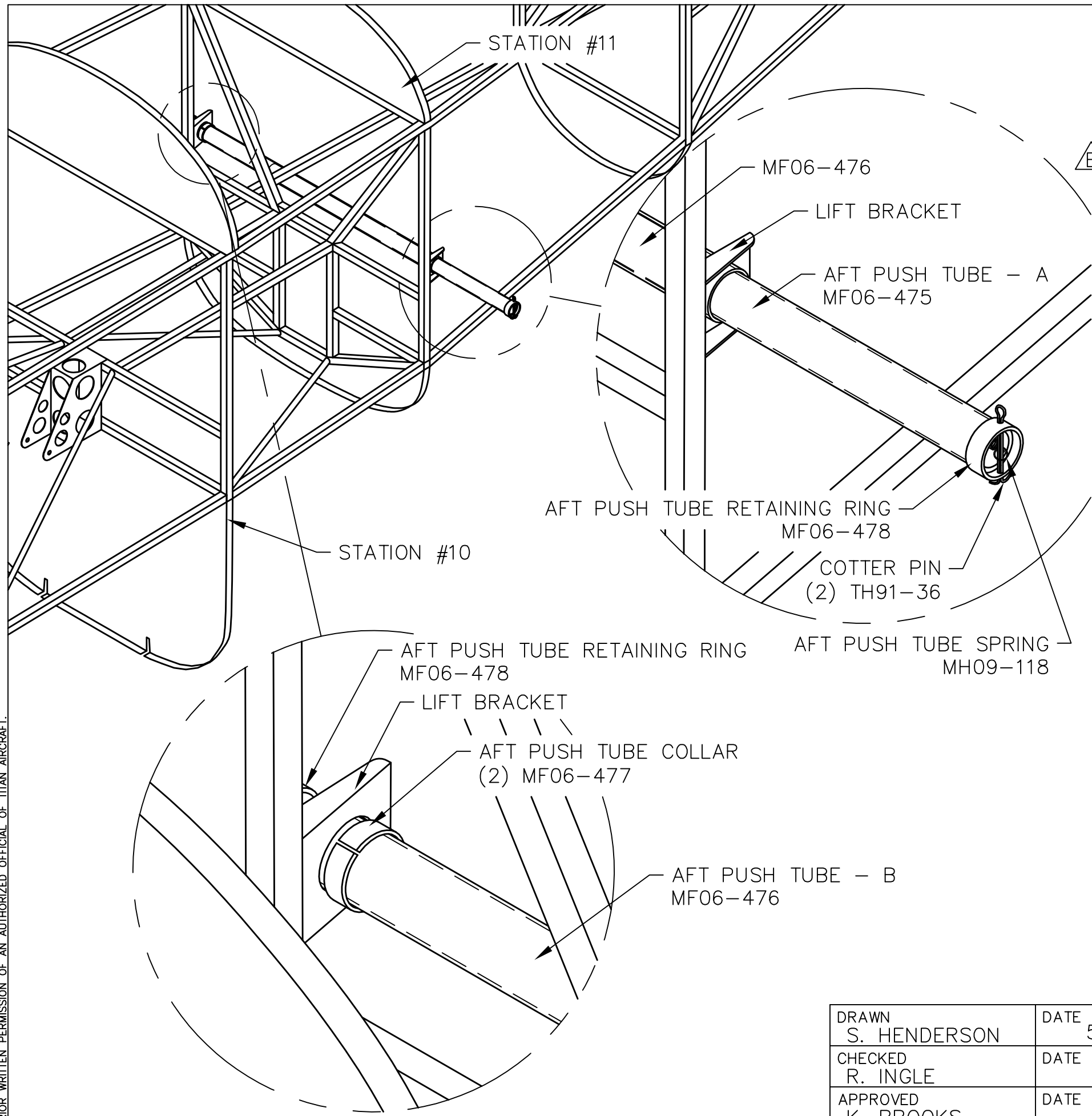


THIS DOCUMENT PROPRIETARY TO TITAN AIRCRAFT, AND IS NOT TO BE USED, CIRCULATED, REPRODUCED, COPIED, OR DISCLOSED IN ANY MANNER WITHOUT PRIOR WRITTEN PERMISSION OF AN AUTHORIZED OFFICIAL OF TITAN AIRCRAFT.



REVISIONS				
E.C. NO.	REV.	DESCRIPTION	BY	DATE
	A	DRAWING RELEASED	SH	5/06
0855	B	SPRING NOTE ADDED	SH	1/09
1074	C	CORRECTED PART NUMBER	BH	7/10

NOTE:

- BE SURE TO INSTALL TAILWHEEL ENCLOSURE PRIOR TO AFT PUSH TUBE INSTALLATION, REFER TO DRAWING T51-06-INS-1407.
- INSERT 1" DIA. AFT PUSH TUBE - B (MF06-476) INTO THE LIFT BRACKETS WELDED TO STATION #11. (MF06-476 SHOULD BE FLUSH WITH HORIZONTAL FUSELAGE TUBES.)
- USE THE (2) 1 1/8" DIA. AFT PUSH TUBE COLLARS (MF06-477) ON THE INSIDE OF EACH LIFT BRACKET AND BOND TO 1" DIA. AFT PUSH TUBE - B (MF06-476) WITH URALANE.
- INSERT 7/8" DIA. AFT PUSH TUBE - A (MF06-475) INTO 1" DIA. AFT PUSH TUBE - B (MF06-476).
- USE (2) COTTER PINS (TH91-36) AND INSERT ONE INTO EACH 1" DIA. AFT PUSH TUBE RETAINING RING (MF06-478) AND SECURE IN PLACE.
- ATTACH THE AFT PUSH TUBE SPRING (MH09-118) TO ONE OF THE TWO COTTER PINS (TH91-36) ATTACHED TO THE RETAINING RINGS (MF06-478), FEED SPRING THRU BOTH PUSH TUBES AND ATTACH OPPOSITE END OF SPRING TO THE OTHER RETAINING RING COTTER PIN.
- THIS WAY THE AFT PUSH TUBE - A (MF06-475) CAN BE PULLED OUT ON EITHER SIDE OF THE AIRCRAFT AND SHOULD ALWAYS BE PULLED BACK TO CENTER BY THE SPRING.


TITAN AIRCRAFT SUPPLY
 1419 STATE ROUTE 45 SOUTH
 AUSTINBURG, OHIO 44010

DETAIL NAME		AFT PUSH TUBE INSTRUCTIONAL		
SCALE	1/8"=1"	PART NO.		
ASSEMBLY NAME				
PART NO.		DRAWING NO. F46		
DRAWING NO.		B T51-06-INS-1406-C		

DRAWN	S. HENDERSON	DATE	5/24/06
CHECKED	R. INGLE	DATE	7/2/10
APPROVED	K. BROOKS	DATE	7/6/10