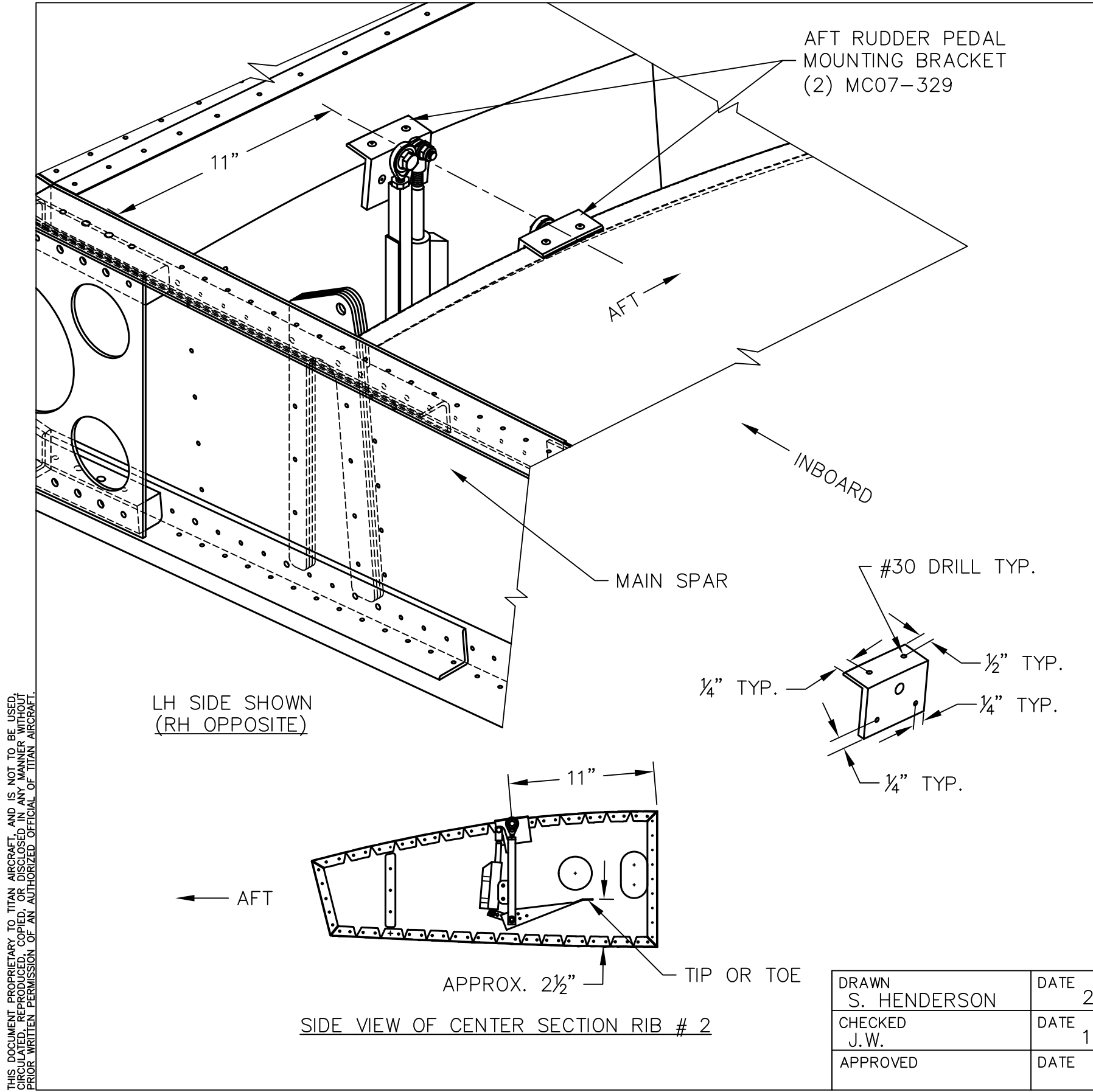


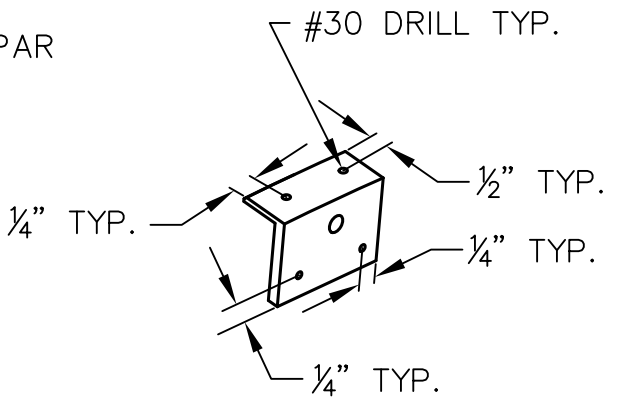
THIS DOCUMENT PROPRIETARY TO TITAN AIRCRAFT, AND IS NOT TO BE USED, REPRODUCED, COPIED, OR DISCLOSED IN ANY MANNER WITHOUT PRIOR WRITTEN PERMISSION OF AN AUTHORIZED OFFICIAL OF TITAN AIRCRAFT.



REVISIONS				
E.C. NO.	REV.	DESCRIPTION	BY	DATE
0669	B	DIMENSION CHANGED	SH	4/08
0824	C	NOTES CHANGED	SH	12/08
1179	D	CHANGED SK45 TO SK46 RIVETS	BH	3/15

**NOTES:**

- BE CAREFUL NOT TO DRILL INTO THE FUEL TANKS WHEN DRILLING HOLES FOR THE MOUNTING BRACKETS (MC07-329).
- WHEN POSITIONING THE AFT RUDDER PEDALS, MEASURE 11" BACK FROM THE FRONT OF THE FOOT WELL. THIS WILL BE THE CENTER OF THE MOUNTING BRACKETS BOLT. BOND AND RIVET THE MOUNTING BRACKETS IN PLACE USING (4) SD44BS RIVETS ON THE TOP SIDE AND (4) SK46BS RIVETS ON THE INSIDE.
- WHEN THE AFT RUDDER PEDAL ASSEMBLIES ARE IN THE NEUTRAL POSITION THE TIP OR TOE OF THE BRAKE PEDALS SHOULD BE APPROXIMATELY 2 1/2" ABOVE THE FLOOR.
- WHEN FOLDED BACK IN THE STOW POSITION THE FOOT RAIL OR SHAFT SHOULD BE APPROXIMATELY 3/8" FORWARD OF THE BACK WALL OF THE FOOT WELL. IF YOU ARE INSTALLING THE OPTIONAL BRAKES, YOU WILL HAVE ABOUT 1/8" CLEARANCE BETWEEN THE AFT EDGE OF THE BRAKE PEDAL AND THE AFT TOP EDGE OF THE FOOT WELL.
- WHEN THE AFT RUDDER PEDALS ARE IN THE STOWED POSITION THE REAR SEAT PASSENGER IS UNABLE TO APPLY BRAKES AS THE TIP OR TOE OF THE BRAKE PEDAL IS VERY CLOSE TO OR TOUCHING THE FLOOR.



**TITAN AIRCRAFT SUPPLY**  
1419 STATE ROUTE 45 SOUTH  
AUSTINBURG, OHIO 44010

DETAIL NAME AFT RUDDER PEDAL FOOT WELL INSTALLATION

DRAWN S. HENDERSON	DATE 2/20/08	SCALE 1"=1"	PART NO.
CHECKED J.W.	DATE 10/15/18	ASSEMBLY NAME	
APPROVED	DATE	PART NO.	DRAWING NO. CS17
		DRAWING NO. <b>B T51-08-INS-1713-D</b>	