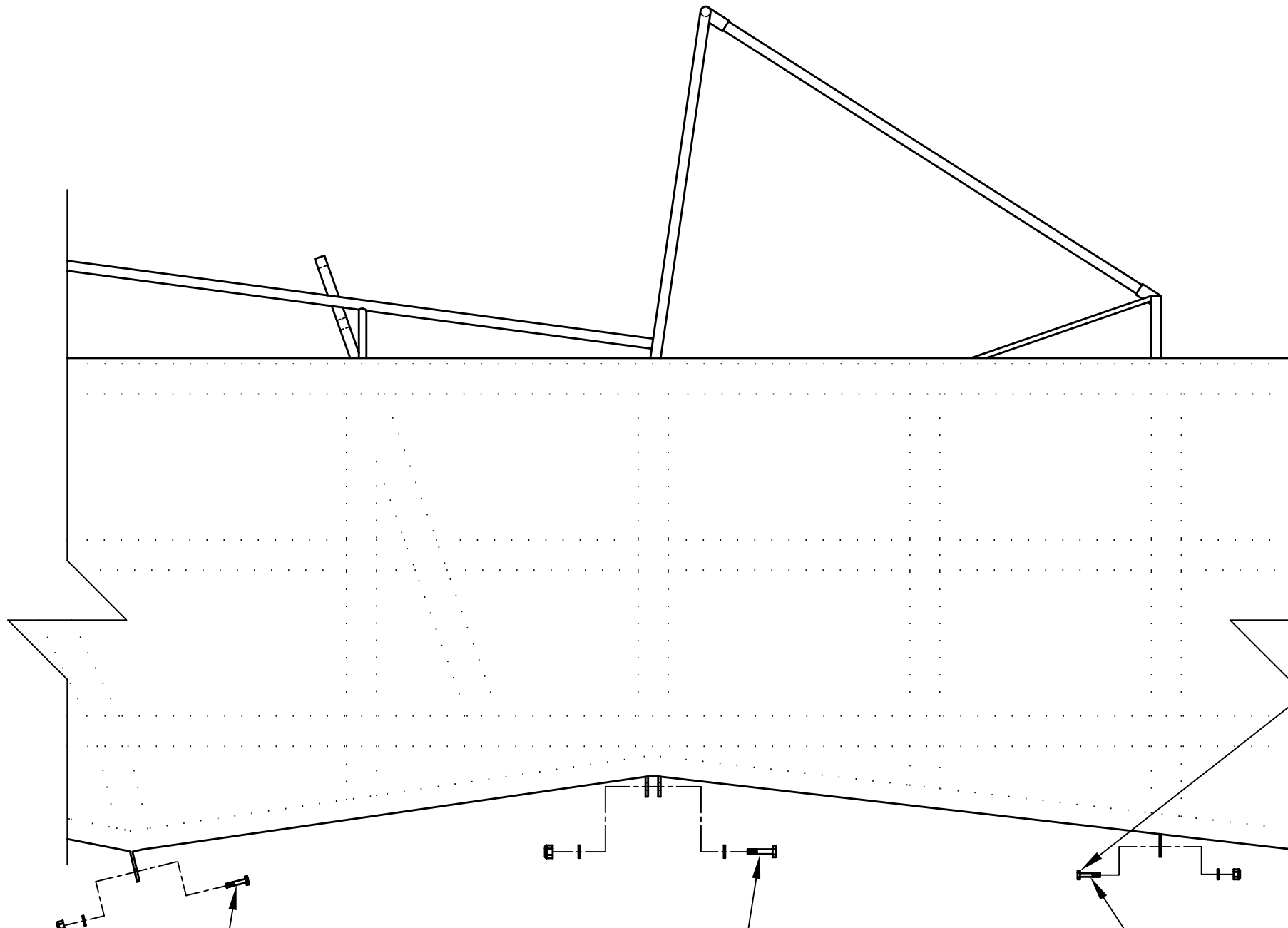


REVISIONS

| E.C. NO. | REV. | DESCRIPTION | BY | DATE |
|----------|------|------------------|----|------|
| | A | DRAWING RELEASED | SH | 7/09 |

NOTES:

- TORQUE BOLTS TO SPEC:
AN5-5A $\phi\frac{5}{16}$ " TO 100-140 IN LBS.
AN6-13A $\phi\frac{3}{8}$ " TO 160-190 IN LBS.



FWD →

NOTE:
THESE BOLTS ARE BACKWARDS FOR
INSTALLATION AND INSPECTION PURPOSES

(2) AN5-5A BOLT, (2) AN960-516 WASHER, &
(2) AN365-524 LOCKNUT

(2) AN6-13A BOLT, (4) AN960-616 WASHER, &
(2) AN365-624 LOCKNUT

(2) AN5-5A BOLT, (2) AN960-516 WASHER, &
(2) AN365-524 LOCKNUT

TITAN AIRCRAFT SUPPLY
1419 STATE ROUTE 45 SOUTH
AUSTINBURG, OHIO 44010

DETAIL NAME CENTER SECTION & FUSELAGE MATTING INSTRUCTIONS

| | | | |
|-----------------------|-----------------|--|--------------------|
| DRAWN S. HENDERSON | DATE 7/9/09 | SCALE N/A | PART NO. |
| CHECKED R. INGLE | DATE 1/25/10 | ASSEMBLY NAME | |
| APPROVED K. BROOKS | DATE 1/26/10 | PART NO. | DRAWING NO. CS18.5 |
| | | DRAWING NO. B T51-09-INS-1848-A | |

THIS DOCUMENT PROPRIETARY TO TITAN AIRCRAFT, AND IS NOT TO BE USED, CIRCULATED, REPRODUCED, COPIED, OR DISCLOSED IN ANY MANNER WITHOUT PRIOR WRITTEN PERMISSION OF AN AUTHORIZED OFFICIAL OF TITAN AIRCRAFT.