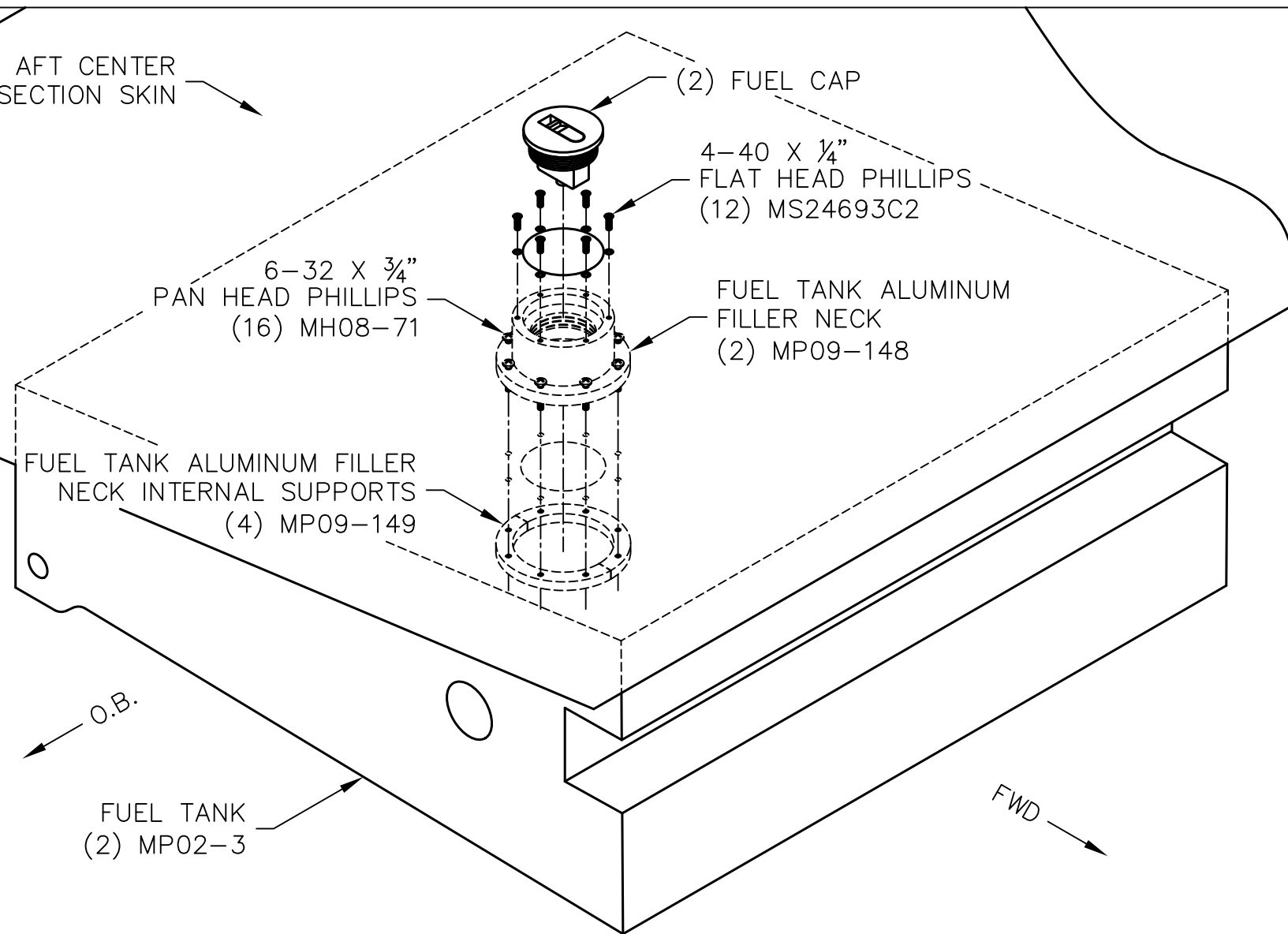


AFT CENTER SECTION SKIN



(2) FUEL CAP

4-40 X 1/4"
FLAT HEAD PHILLIPS
(12) MS24693C2

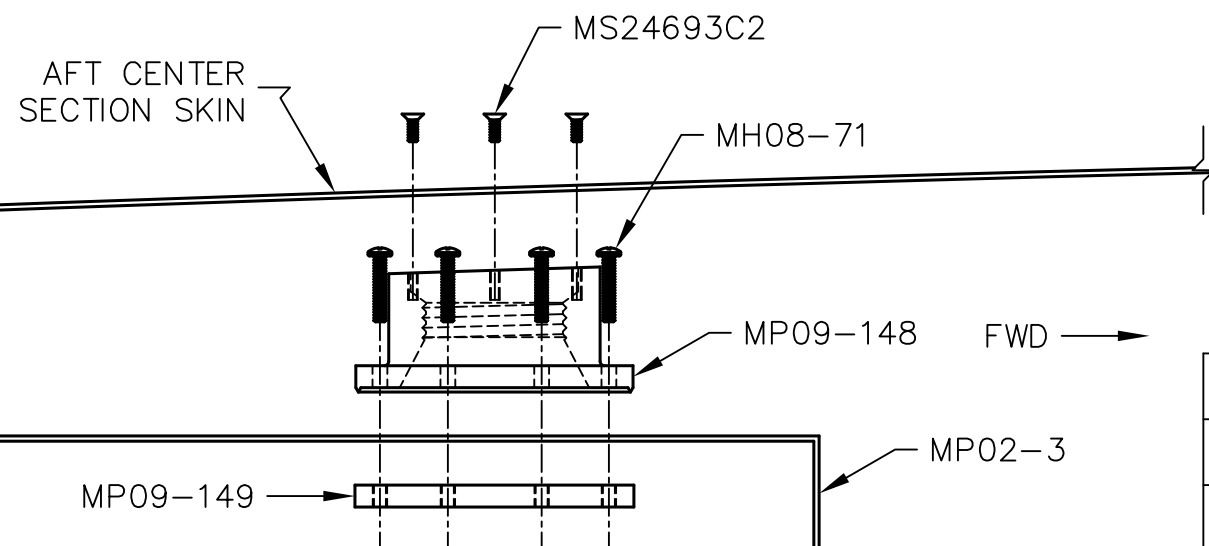
6-32 X 3/4"
PAN HEAD PHILLIPS
(16) MH08-71

FUEL TANK ALUMINUM
FILLER NECK
(2) MP09-148

FUEL TANK ALUMINUM FILLER
NECK INTERNAL SUPPORTS
(4) MP09-149

FUEL TANK
(2) MP02-3

AFT CENTER SECTION SKIN



MS24693C2

MH08-71

MP09-148

FWD

MP09-149

MP02-3

REVISIONS

E.C. NO.	REV.	DESCRIPTION	BY	DATE
	A	DRAWING RELEASED	SH	7/09
1138	B	UPDATED HARDWARE	BH	12/11

NOTES:

- BE SURE THE FUEL TANKS ARE INSTALLED IN THE CENTER SECTION PRIOR TO INSTALLING THE FUEL FILLER NECKS. (REFER TO DRAWINGS T51-03-INS-0609, T51-03-INS-0610, T51-03-INS-0611, & T51-07-INS-1631.) **DO NOT INSTALL THE VENT LINES ON THE MAIN FUEL TANKS UNTIL FUEL FILLER NECKS ARE POSITIONED.**

- SINCE THE TOP OF THE FUEL TANKS ARE SUNK IN SLIGHTLY, IT IS RECOMMENDED TO FILL THE TANKS WITH APPROXIMATELY 1 PSI OF AIR BEFORE ATTEMPTING TO INSTALL THE FILLER NECKS.

- WITH THE WINGWALK STIFFENERS CLECOED IN PLACE AND THE AFT CENTER SECTION SKINS REMOVED, USE A STRAIGHT EDGE TO DETERMINE THE BEST POSITION FOR THE FILLER NECKS. THE FILLER NECKS HAVE A 1/16" LIP ON THE BOTTOM SIDE, THIS NEEDS TO BE ACCOUNTED FOR DURING INSTALLATION. (THE FILLER NECKS SHOULD DROP 1/16" WHEN THE SCREWS ARE TIGHTENED)

TITAN AIRCRAFT SUPPLY
TITAN AIRCRAFT 1419 STATE ROUTE 45 SOUTH
 AUSTINBURG, OHIO 44010

DETAIL NAME FUEL TANK ALUMINUM FILLER NECK INSTALLATION

DRAWN S. HENDERSON	DATE 7/14/09	SCALE N/A	PART NO.
CHECKED R. DALIN	DATE 10/2/18	ASSEMBLY NAME	
APPROVED	DATE	PART NO. MP11-170	DRAWING NO. 07
DRAWING NO. B T51-09-INS-1850-B			

THIS DOCUMENT PROPRIETARY TO TITAN AIRCRAFT AND IS NOT TO BE USED, REPRODUCED, COPIED, OR DISCLOSED IN ANY MANNER WITHOUT PRIOR WRITTEN PERMISSION OF AN AUTHORIZED OFFICIAL OF TITAN AIRCRAFT.