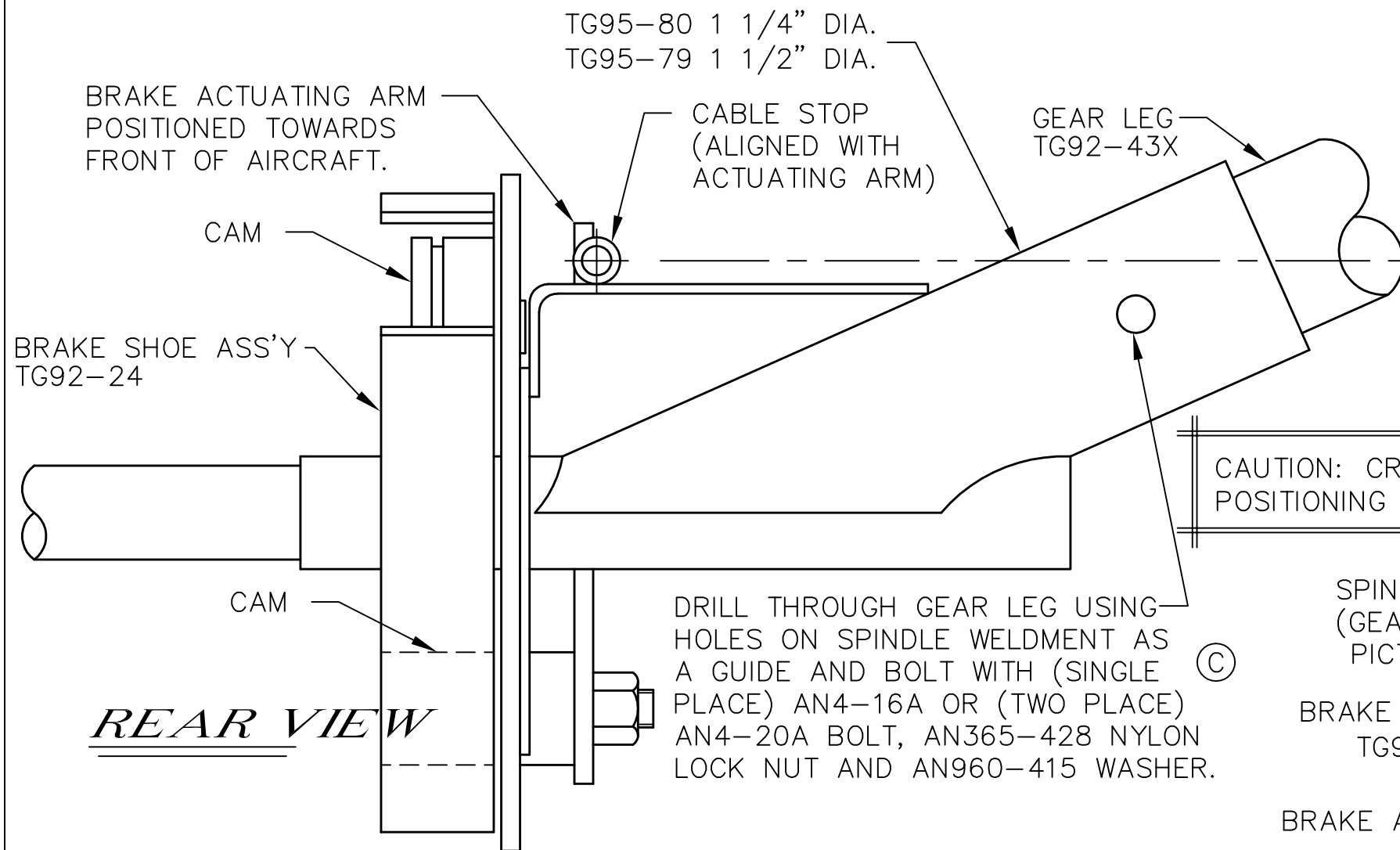


REVISIONS

E.C. NO.	REV.	DESCRIPTION	BY	DATE
	B	ADDED NEW SPINDLE ASSEMBLY	K.B.	2/96
1118	C	WAS JUST AN4-20 BOLT	K.B.	7/96
1824	D	ADDED PART NUMBERS	KL	3/01

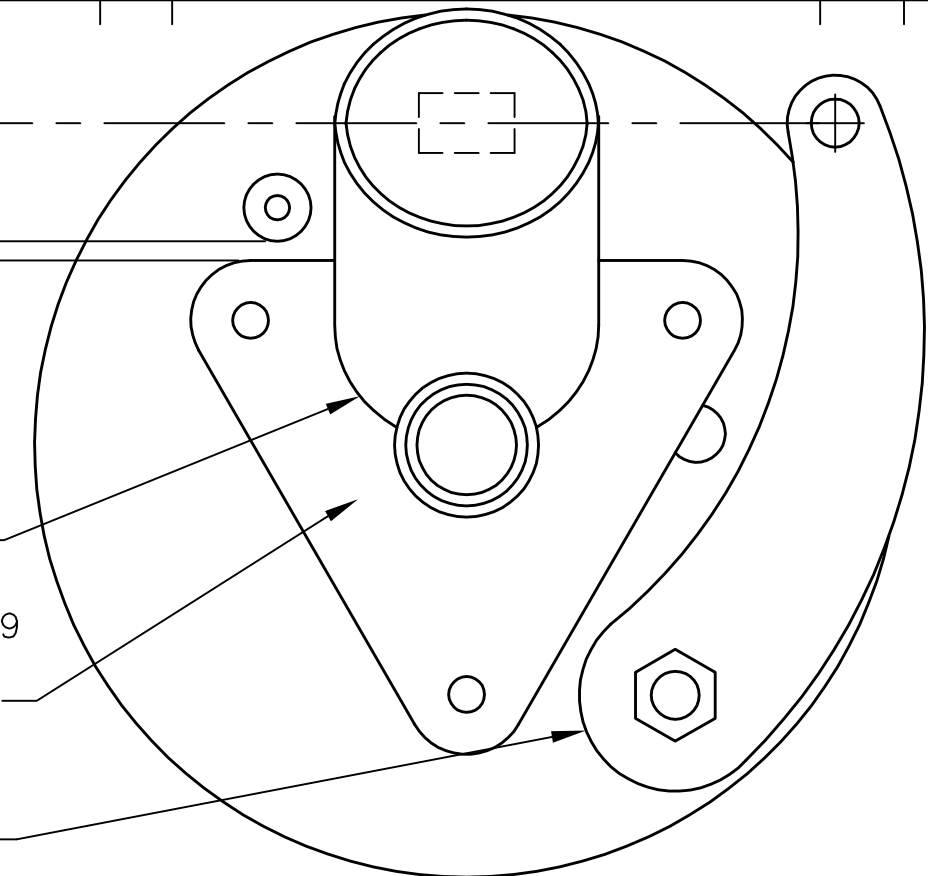


CAUTION: CRITICAL POSITIONING DIMENSION

DRILL THROUGH GEAR LEG USING HOLES ON SPINDLE WELDMENT AS A GUIDE AND BOLT WITH (SINGLE PLACE) AN4-16A OR (TWO PLACE) AN4-20A BOLT, AN365-428 NYLON LOCK NUT AND AN960-415 WASHER.

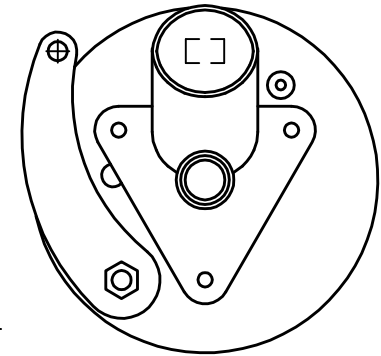
REAR VIEW

SPINDLE WELDMENT (GEAR LEG NOT PICTURED) TG95-79
 BRAKE BACKING PLATE TG91-2X
 BRAKE ACTUATING ARM



Ⓓ RIGHT SIDE VIEW TOWARD FRONT OF AIRCRAFT

← LEFT SIDE VIEW Ⓓ TOWARDS FRONT OF AIRCRAFT



- NOTES:
- ALL DIMENSIONS ARE INCHES.
 - AFTER THE SPINDLE WELDMENT IS POSITIONED ON THE BRAKE BACKING PLATE AS SHOWN, DRILL (3) 3/16 DIA MOUNTING HOLES THRU THE BRAKE BACKING PLATE. USE THE EXISTING HOLES ON THE SPINDLE WELDMENT AS A GUIDE.
 - MOUNT SPINDLE TO BRAKE BACKING PLATE WITH:
 - (3) AN3-5A BOLTS
 - (3) AN365-1032A NUTS
 - (6) AN960-10 WASHERS (PLACE TWO WASHERS NEXT TO EACH NUT)
 - TO BOLT TOGETHER, REMOVE THE BRAKE SHOES, AND INSERT THE BOLTS FROM THE BRAKE SHOE SIDE.

- THE CENTER OF THE HOLE IN THE BRAKE ACTUATING ARM SHOULD BE ALIGNED WITH THE CENTER OF THE CABLE STOP AS SHOWN.
- IMPORTANT: LUBRICATE CAMS AT FINAL ASSEMBLY.

CAUTION: DO NOT GET ANY LUBRICANT ON BRAKE SHOES.

TITAN AIRCRAFT SUPPLY
 1419 STATE ROUTE 45 SOUTH
 AUSTINBURG, OHIO 44010

DETAIL NAME		SPINDLE AND BRAKE ASSEMBLY	
SCALE	N/A	PART NO.	
ASSEMBLY NAME ALL TORNADO AIRCRAFT			
PART NO.		DRAWING NO.	
DRAWING NO.		B 92-INS-0178-D	

DRAWN	J. PRESTON	DATE	1/20/93
CHECKED	R. INGLE	DATE	3/2/01
APPROVED	J. WILLIAMS	DATE	3/2/01

THIS DOCUMENT PROPRIETARY TO TITAN AIRCRAFT. AND IS NOT TO BE USED, CIRCULATED, REPRODUCED, COPIED, OR DISCLOSED IN ANY MANNER WITHOUT PRIOR WRITTEN PERMISSION OF AN AUTHORIZED OFFICIAL OF TITAN AIRCRAFT.