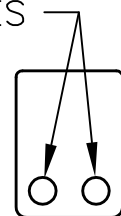


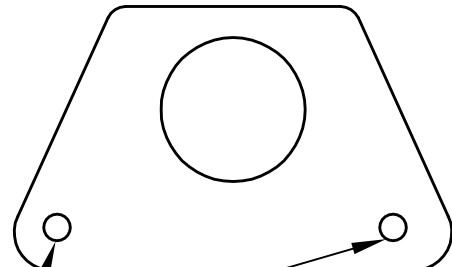
NOTES:

- BRAKE CABLE IS SHEATHED BETWEEN CABLE STOPS.
- TIE WRAP SHEATHING TO FUSELAGE FRAME.
- ROUTE BRAKE CABLE UNDER GEAR LEG TUBE BUT OVER ITS CROSS TUBE.
- TO PREVENT BRAKE CABLE FROM BINDING, AVOID SHARP BENDS IN SHEATHING.
- POSITION TURNBUCKLES SO THEY DO NOT COLLIDE WITH THE CABLE GUIDES AT FULL DEFLECTION.
- SEE ASSEMBLY DRAWINGS FOR MOUNTING CABLES TO COMPONENTS.

RUDDER CABLES



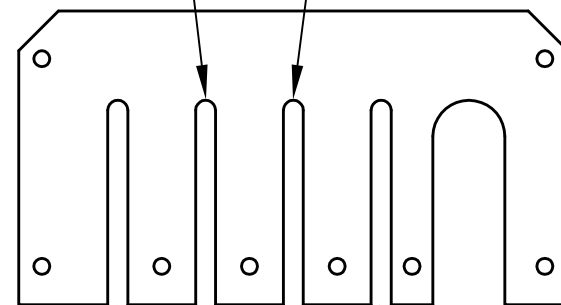
FORWARD CONTROL GUIDE TF92-87



RUDDER CABLES CENTER CONTROL GUIDE TF92-89

CABLE FROM UPPER HOLE ON ELEVATOR DRIVER WELDMENT

CABLE FROM LOWER HOLE ON ELEVATOR DRIVER WELDMENT



RUDDER CABLES FRONT VIEW
MAIN CONTROL GUIDE TF91-110

CABLE TERMINATION POINTS

SYMBOL	LOCATION
(A)	RUDDER PEDALS
(B)	BRAKE PEDALS
(C)	ELEVATOR DRIVER WELDMENT
(D)	BRAKE ACTUATING ARM
(E)	TO STABILATOR CONTROL HORN
(F)	TO RUDDER CONTROL ARM



TITAN AIRCRAFT SUPPLY
1419 STATE ROUTE 45 SOUTH
AUSTINBURG, OHIO 44010

DETAIL NAME		FUSELAGE CABLE ROUTING	
SCALE	N/A	PART NO.	N/A
ASSEMBLY NAME		SINGLE SEAT FUSELAGE ASSEMBLY	
PART NO.	N/A	DRAWING NO.	
DRAWING NO.		B 92-INS-0190-B	

DRAWN	J. PRESTON	DATE	5/7/92
CHECKED	R. INGLE	DATE	3/24/01
APPROVED	J. WILLIAMS	DATE	3/24/01

THIS DOCUMENT PROPRIETARY TO TITAN AIRCRAFT, AND IS NOT TO BE USED, CIRCULATED, REPRODUCED, COPIED, OR DISCLOSED IN ANY MANNER WITHOUT PRIOR WRITTEN PERMISSION OF AN AUTHORIZED OFFICIAL OF TITAN AIRCRAFT.