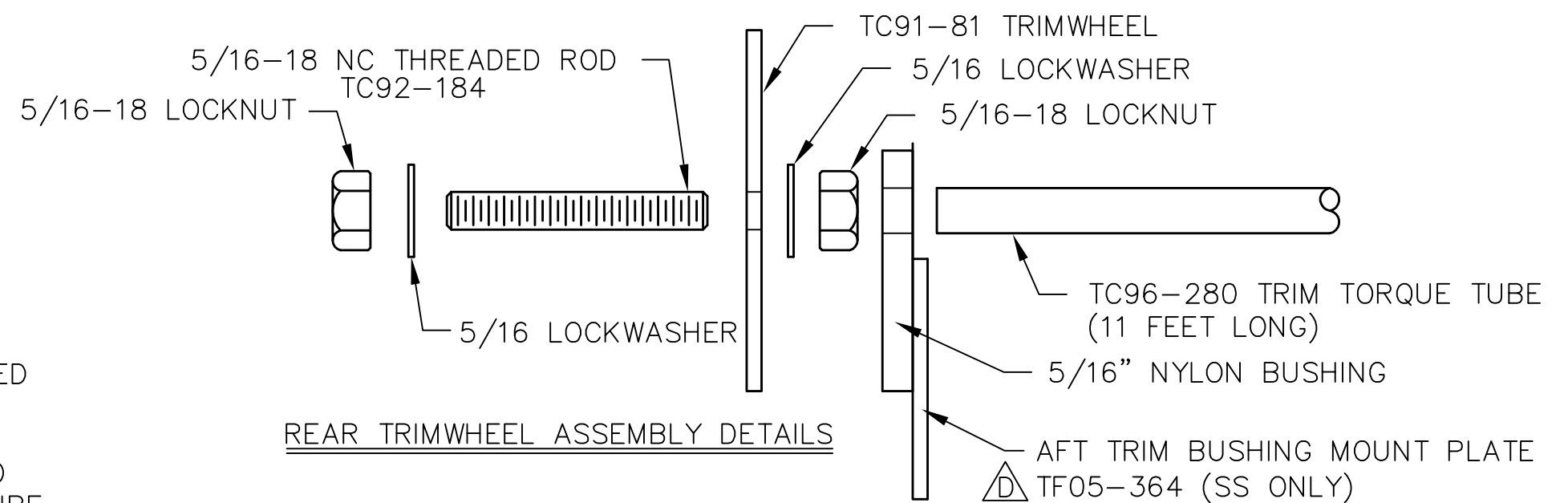
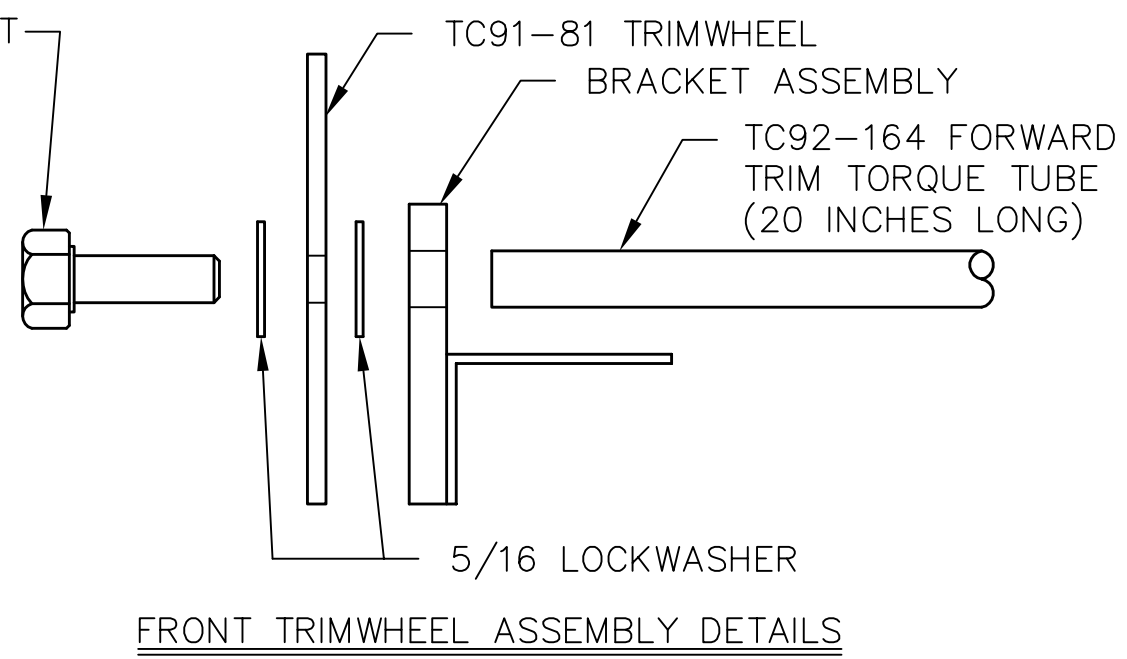
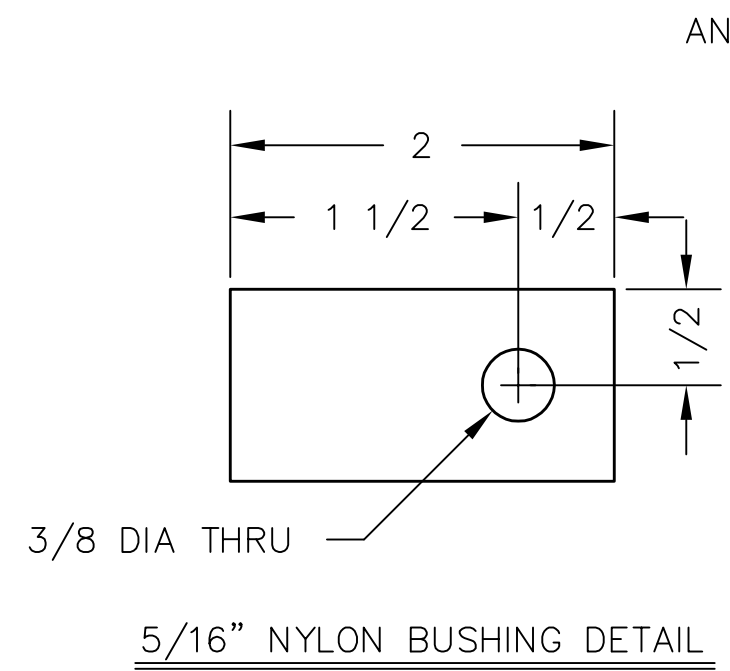
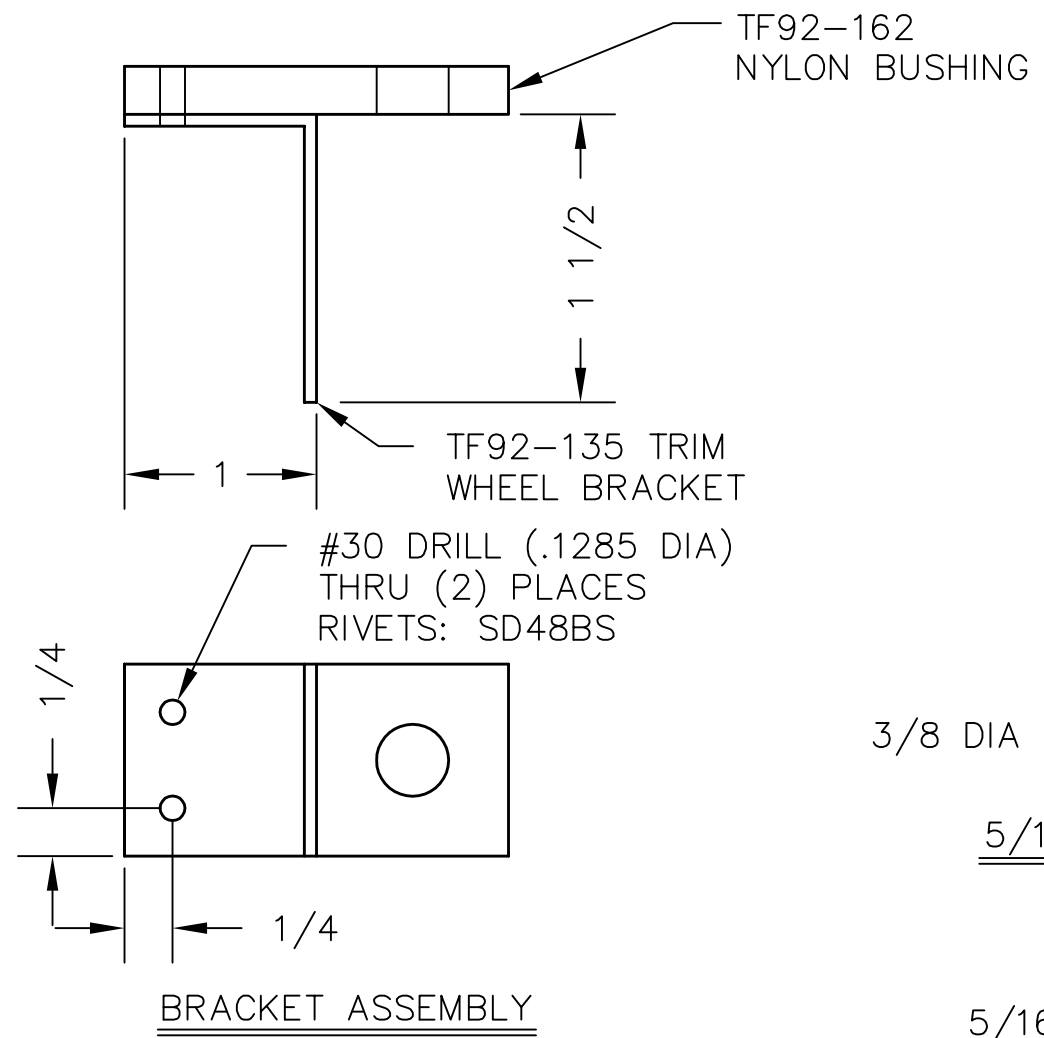


REVISIONS				
E.C. NO.	REV.	DESCRIPTION	BY	DATE
1830	C	ADDED TF92-162 NYLON BUSHING	KL	3/01
2172	D	ADDED PART TC05-364	CE	10/05



- ASSEMBLY PROCEDURES:
- ALL DIMENSIONS ARE INCHES.
 - DRILL 3/8 DIA HOLE THRU (2) NYLON BUSHINGS AS SHOWN.
 - CENTER (1) TRIMWHEEL ON THREADED ROD AND LOCK INTO PLACE WITH THE WASHERS AND NUTS.
 - ASSEMBLE TRIMWHEEL ASSEMBLY TO THE 11 FOOT LONG TRIM TORQUE TUBE.
 - MOUNT SECOND NYLON BUSHING TO METAL BRACKET AS SHOWN.
 - SLIDE BRACKET ASSEMBLY ONTO THE 20 INCH TRIM TORQUE TUBE.
 - ASSEMBLE SECOND TRIMWHEEL TO THE 20 INCH LONG TRIM TORQUE TUBE.
 - SEE DRAWING B92-INS-0227 FOR INSTALLATION OF TRIMWHEEL ASSEMBLIES INTO THE FUSELAGE.

TITAN AIRCRAFT SUPPLY
 1419 STATE ROUTE 45 SOUTH
 AUSTINBURG, OHIO 44010

DETAIL NAME		TRIMWHEEL ASSEMBLY PROCEDURES	
DRAWN	J. PRESTON	DATE	12/28/92
CHECKED	GAT	DATE	10/4/05
APPROVED	JW	DATE	10/5/05
SCALE	N/A	PART NO.	
ASSEMBLY NAME		TWO PLACE TORNADOS	
PART NO.		DRAWING NO.	
DRAWING NO.		B 92-INS-0226-D	

THIS DOCUMENT PROPRIETARY TO TITAN AIRCRAFT, AND IS NOT TO BE USED, CIRCULATED, REPRODUCED, COPIED, OR DISCLOSED IN ANY MANNER WITHOUT PRIOR WRITTEN PERMISSION OF AN AUTHORIZED OFFICIAL OF TITAN AIRCRAFT.