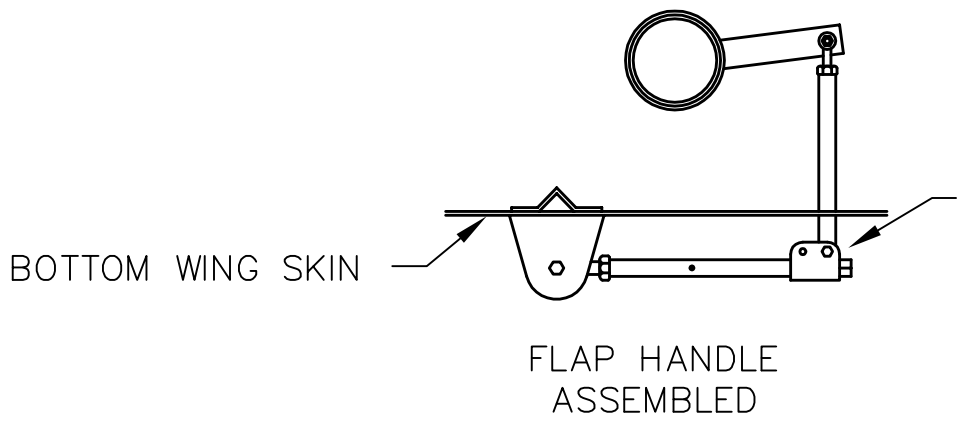
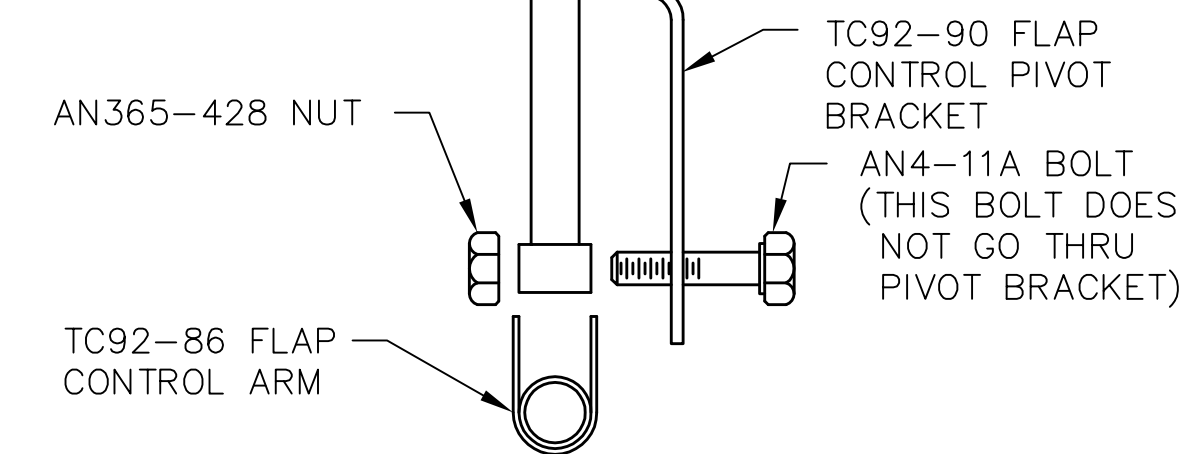
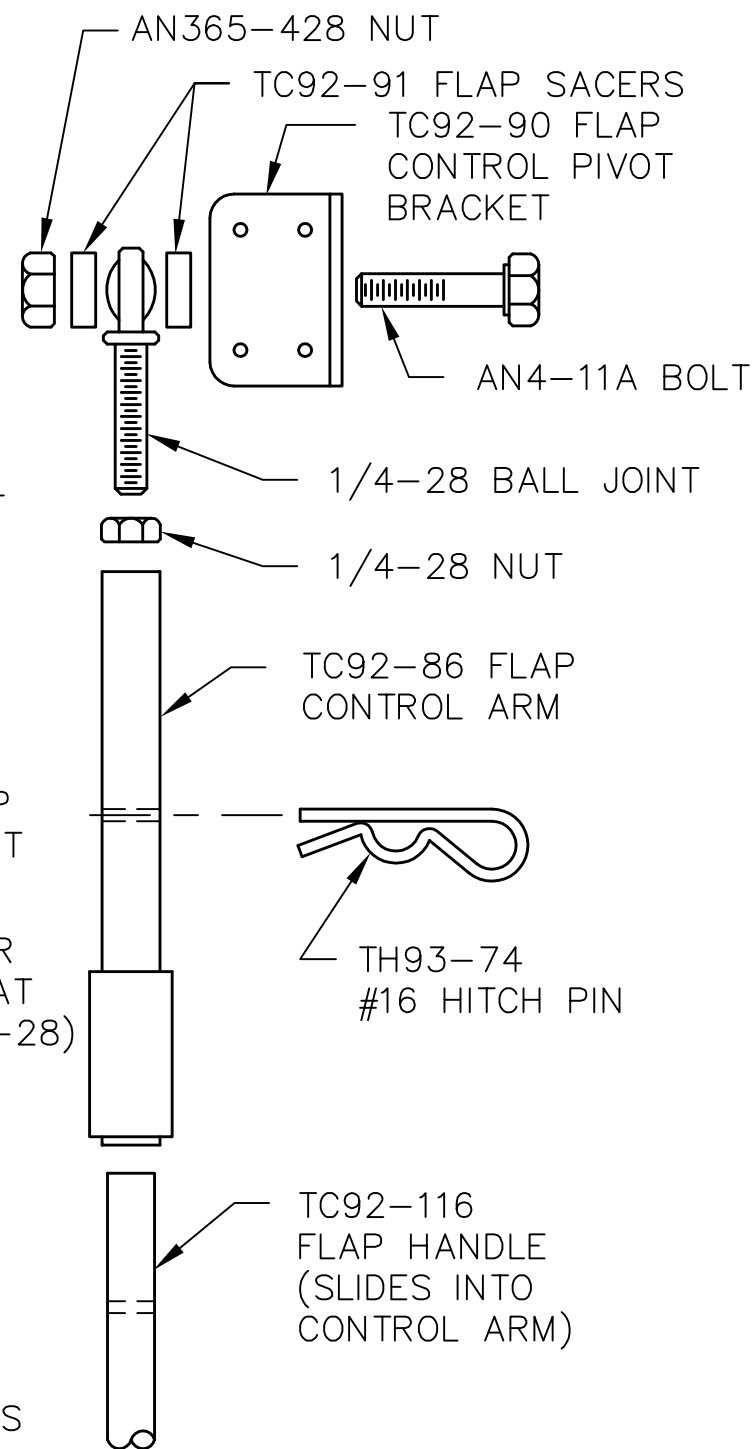
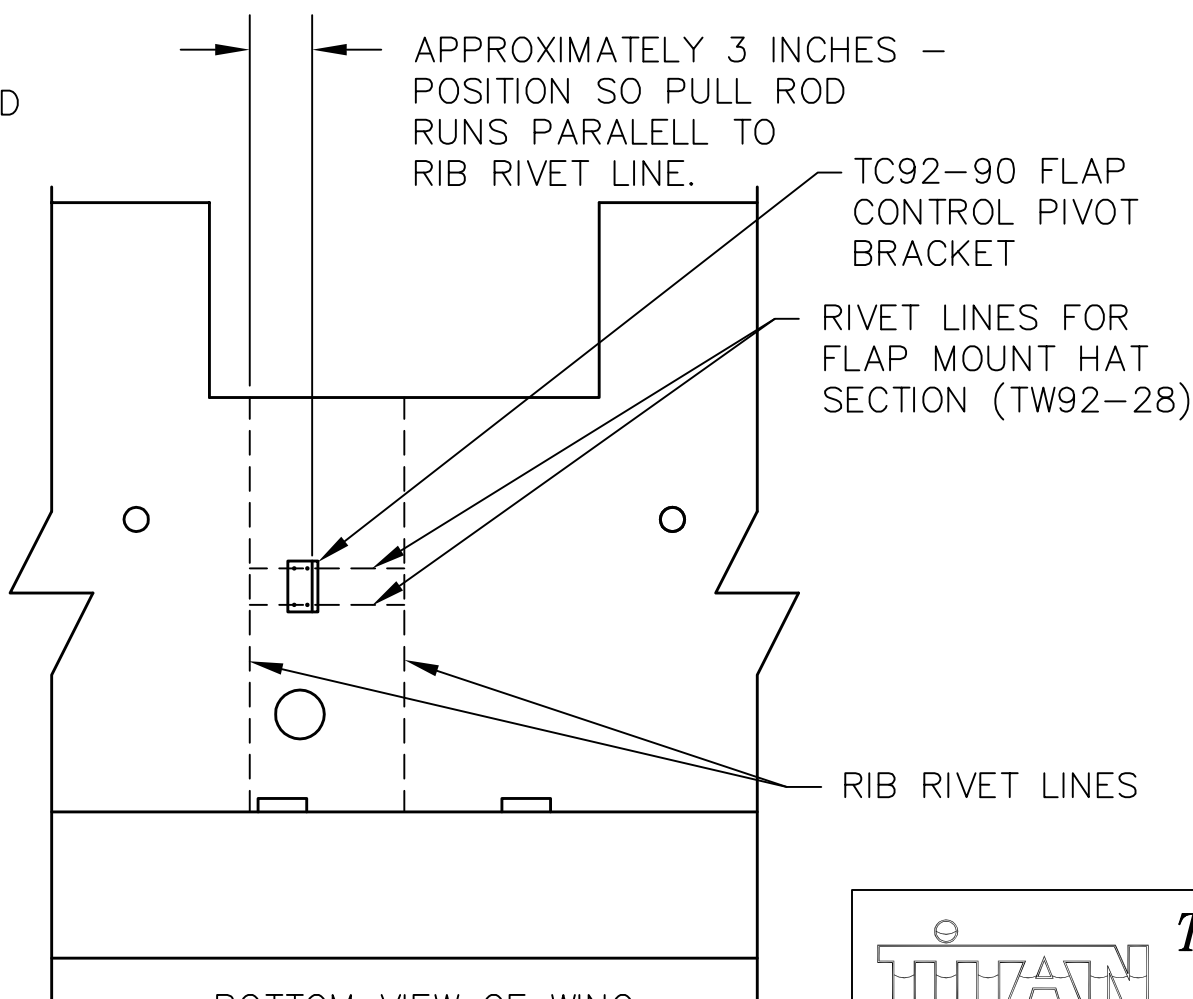


NOTES:

- MOUNT FLAP PULLROD TO CENTER FLAP DRIVER.
- MOUNT FLAP CONTROL ARM TO FLAP PULLROD.
- MOUNT FLAP CONTROL PIVOT BRACKET TO BOTTOM SIDE OF WING AS SHOWN. DRILL MOUNTING HOLES THRU WING SKIN AND FLAP MOUNT HAT SECTION WITH #30 DRILL (.1285 DIA) AND RIVET WITH SD43BS RIVETS (1/8 DIA X 21/64 LONG).
- MOUNT FLAP CONTROL ARM TO PIVOT BRACKET.
- POSITION FLAP TORQUE TUBE AS SHOWN IN DRAWING B92-INS-0326.
- ADJUST PULLROD LENGTH WITH THREADED BALL JOINT TO POSITION FLAP HANDLE IN TOP NOTCH OF FLAP DETENT STRIP. SEE DRAWING NUMBER B92-INS-0237



(2) POSITIONS FOR FLAP PULL ROD. FORWARD POSITION (SHOWN) PROVIDES THE MOST FLAP DEFLECTION, BUT REQUIRES MORE TORQUE TO ROTATE.

TITAN AIRCRAFT SUPPLY
 1419 STATE ROUTE 45 SOUTH
 AUSTINBURG, OHIO 44010

DETAIL NAME		FLAP HANDLE INSTALLATION	
SCALE	N/A	PART NO.	
ASSEMBLY NAME			
PART NO.		DRAWING NO.	
DRAWING NO.		B92-INS-0242-B	

DRAWN	J. PRESTON	DATE	12/29/92
CHECKED	B. PASSAFIUME	DATE	8/18/93
APPROVED	J. WILLIAMS	DATE	8/18/93

THIS DOCUMENT PROPRIETARY TO TITAN AIRCRAFT, AND IS NOT TO BE USED, CIRCULATED, REPRODUCED, COPIED, OR DISCLOSED IN ANY MANNER WITHOUT PRIOR WRITTEN PERMISSION OF AN AUTHORIZED OFFICIAL OF TITAN AIRCRAFT.