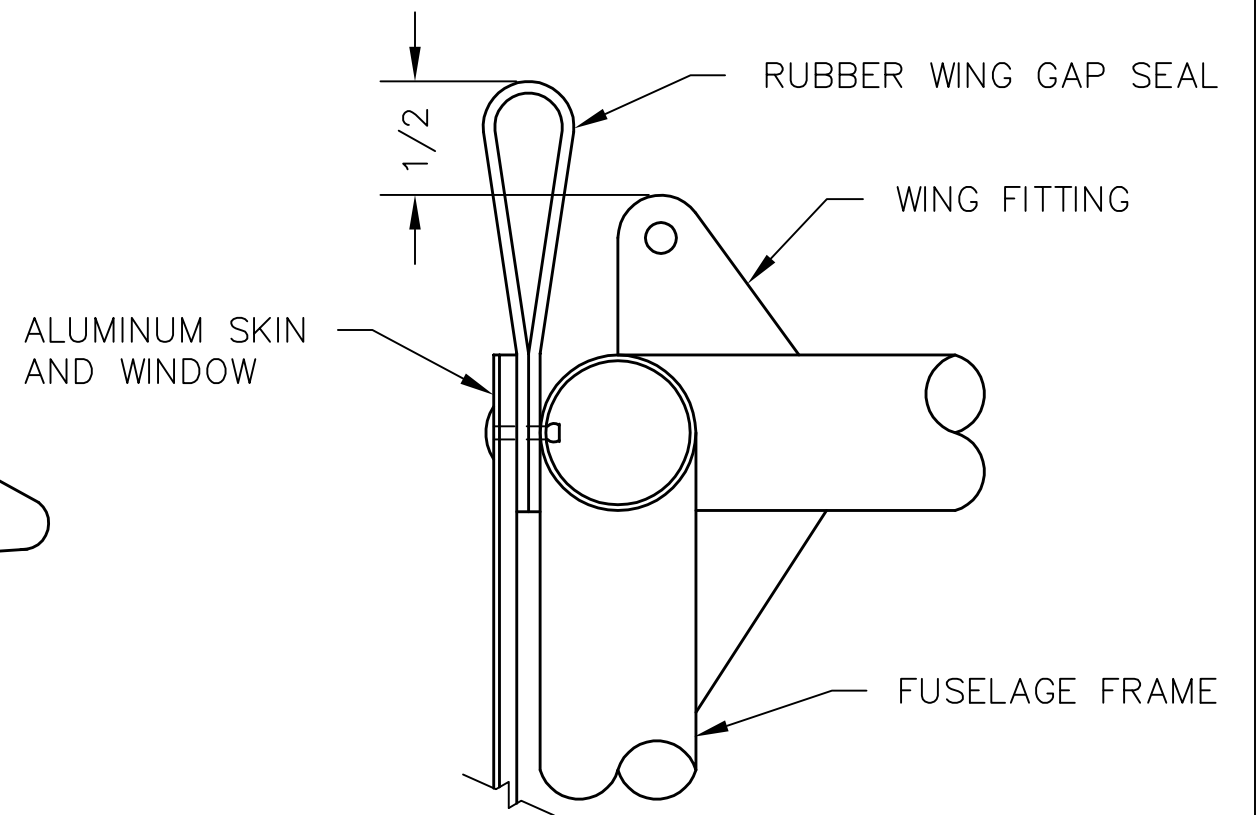
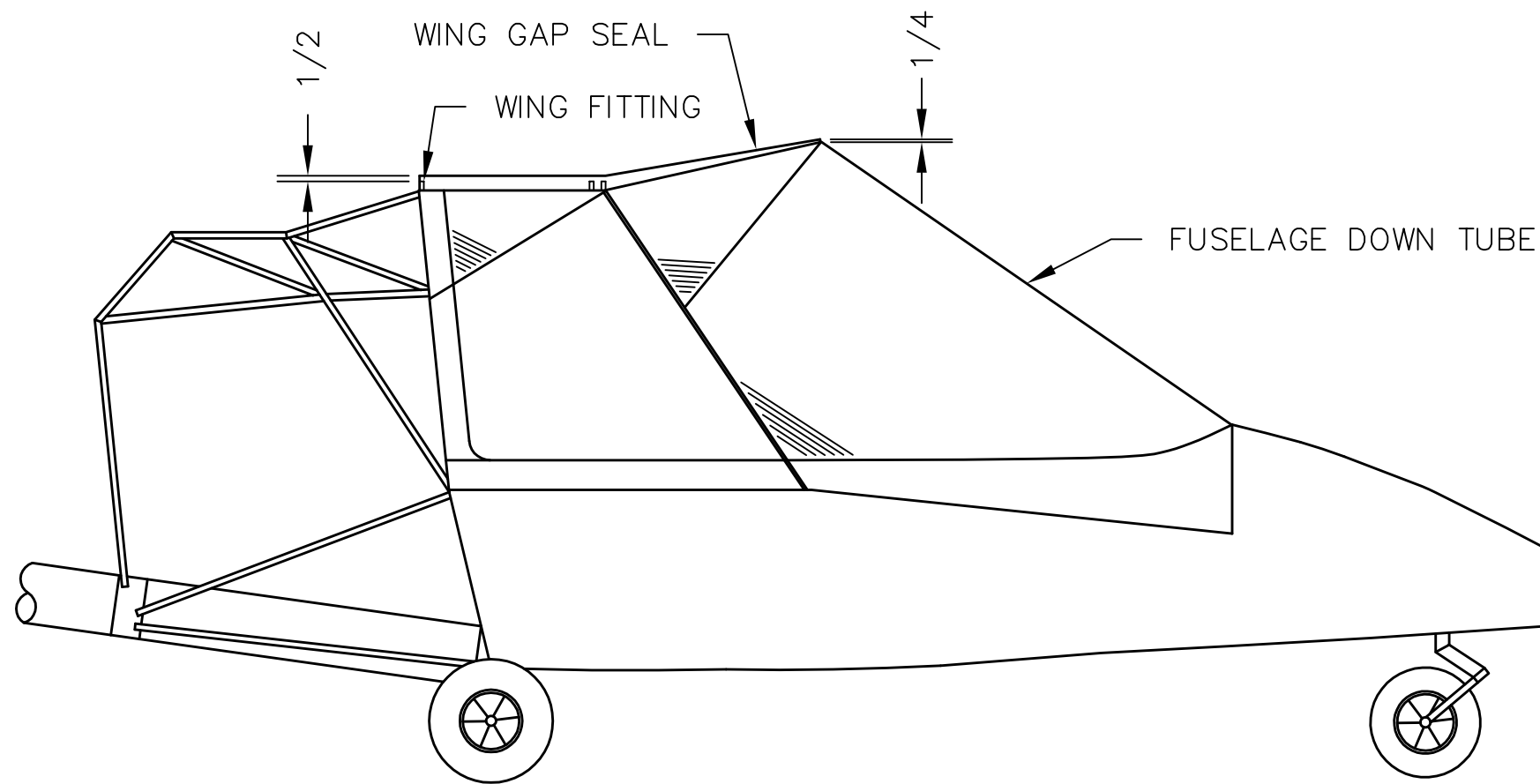


REVISIONS				
E.C. NO.	REV.	DESCRIPTION	BY	DATE
1123	B	AIRCRAFT DETAIL IMPROVED	K.B.	6/97



NOTES:

- ALL DIMENSIONS ARE INCHES.
- DOUBLE OVER RUBBER WING GAP SEAL AS SHOWN.
- SLIDE RUBBER WING GAP SEAL BETWEEN FUSELAGE WINDOWS.
- POSITION SEAL SO THAT IT IS A 1/2 INCH ABOVE THE WING FITTINGS. TAPER THE SEAL DOWN TOWARD THE FRONT SO THAT IT RISES A 1/4 INCH ABOVE THE FUSELAGE DOWN TUBE.
- DRILL MOUNTING HOLES THRU RUBBER WING GAP SEAL WITH #30 DRILL (.1285 DIA) USING EXISTING HOLES AS A GUIDE.
- RIVET WITH AD44ABSLF RIVETS. (1/8 DIA X 29/64 LONG).


**TITAN AIRCRAFT SUPPLY**  
 1419 STATE ROUTE 45 SOUTH  
 AUSTINBURG, OHIO 44010

DETAIL NAME		WING GAP SEAL INSTALLATION	
SCALE	N/A	PART NO.	
ASSEMBLY NAME			
PART NO.		DRAWING NO.	
DRAWING NO.		B 92-INS-0320-B	

DRAWN	J. PRESTON	DATE	12/11/92
CHECKED	B. PASSAFIUME	DATE	6/25/97
APPROVED	J. SUTCH	DATE	6/30/97

THIS DOCUMENT PROPRIETARY TO TITAN AIRCRAFT, AND IS NOT TO BE USED, CIRCULATED, REPRODUCED, COPIED, OR DISCLOSED IN ANY MANNER WITHOUT PRIOR WRITTEN PERMISSION OF AN AUTHORIZED OFFICIAL OF TITAN AIRCRAFT.