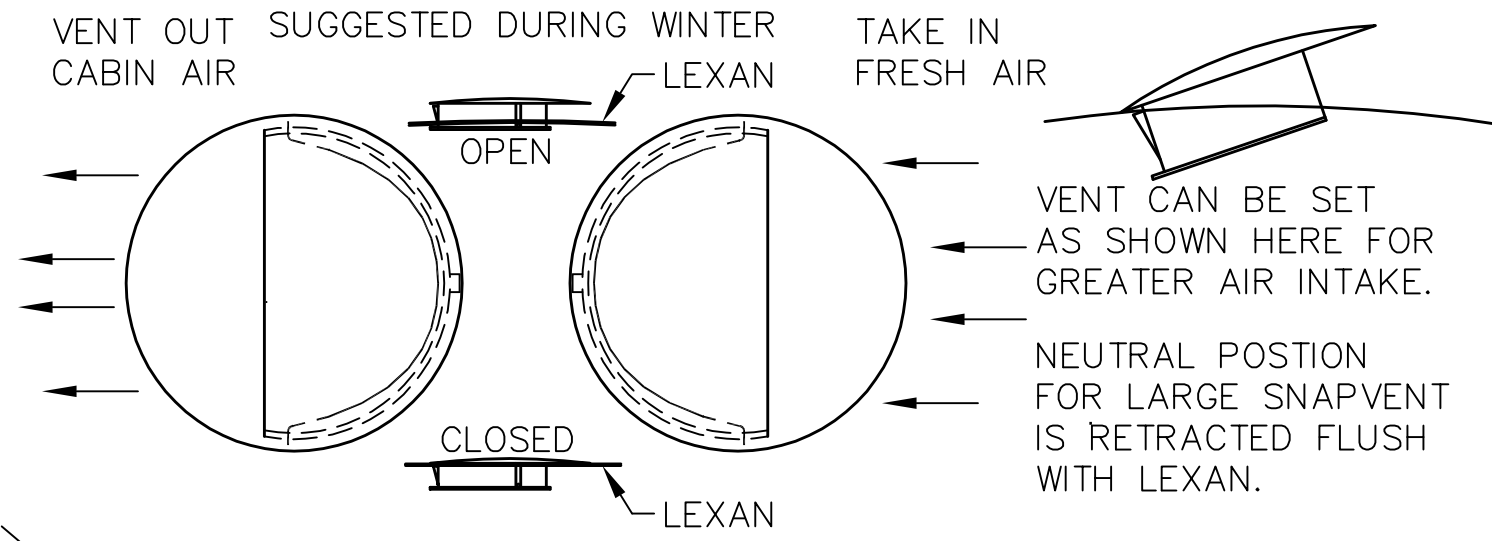
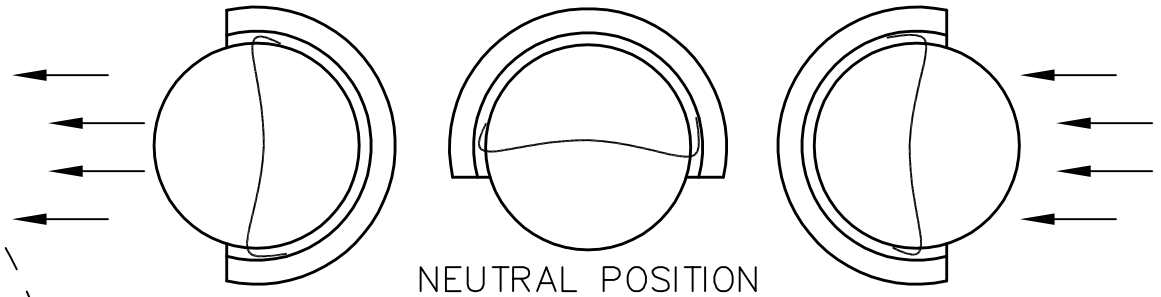
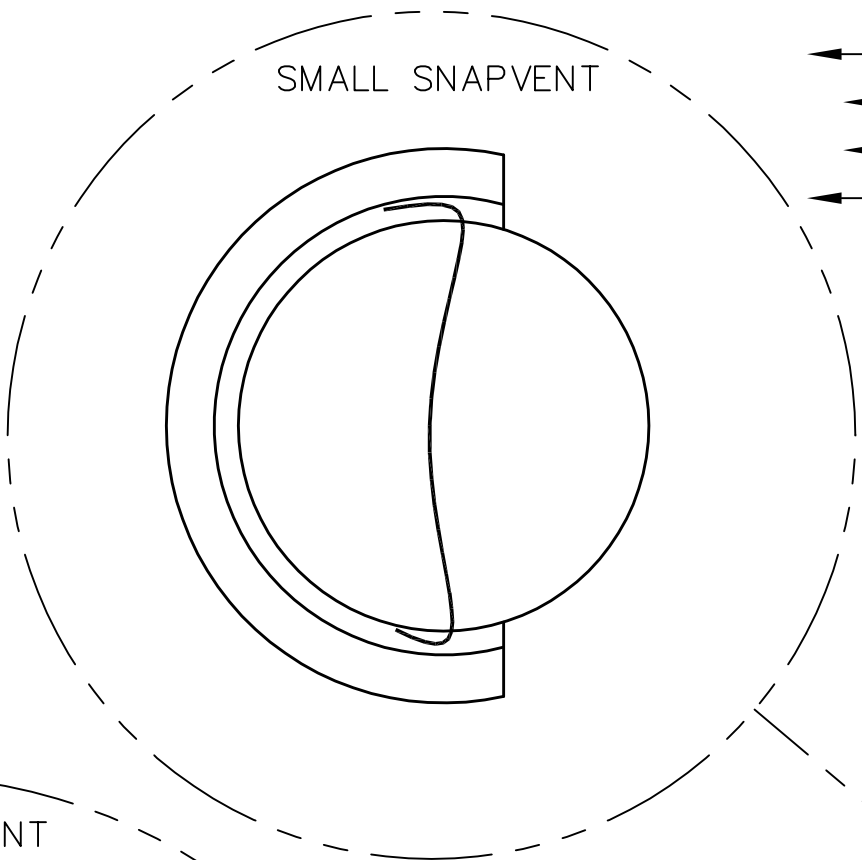
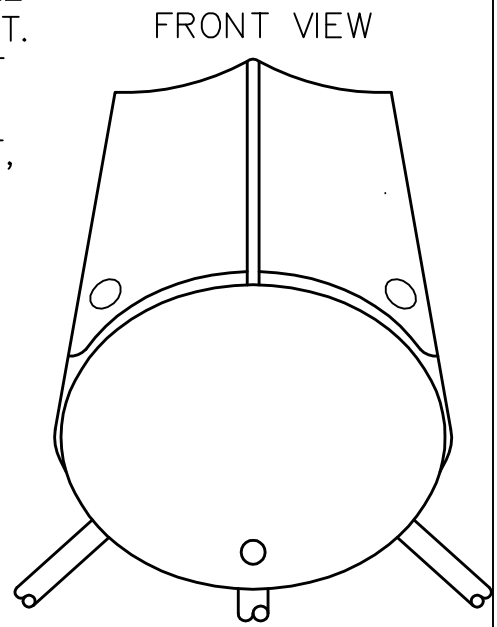
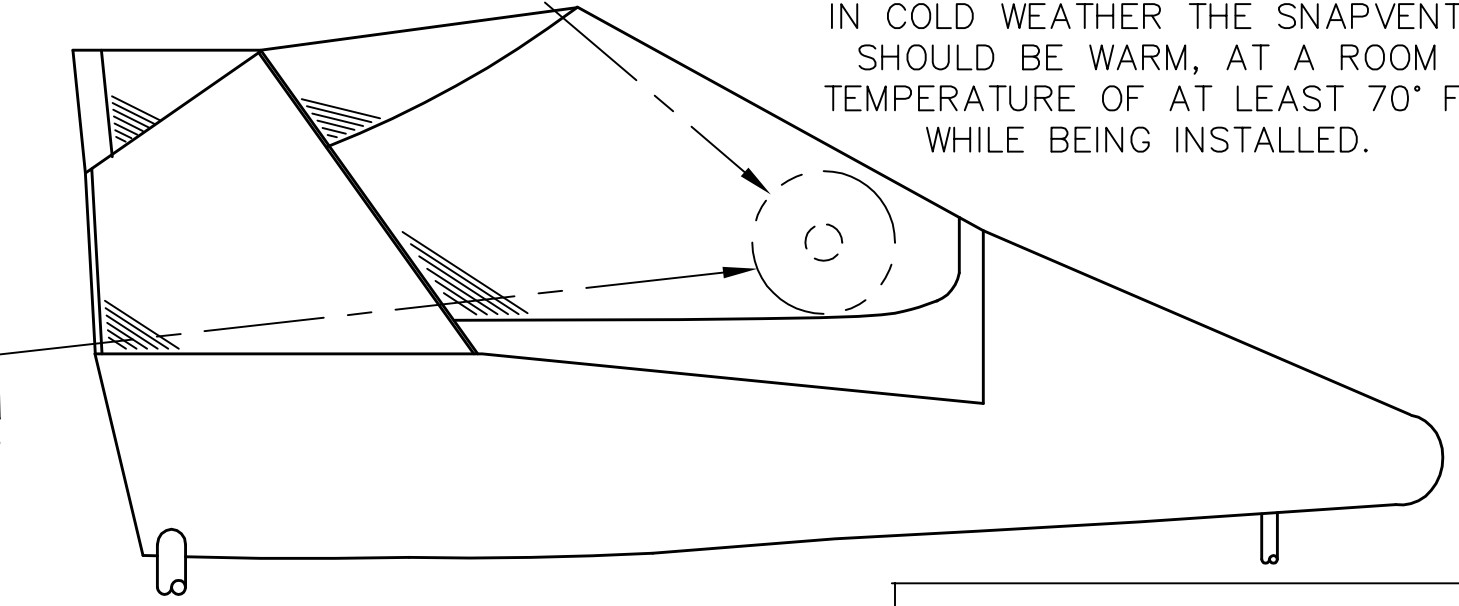
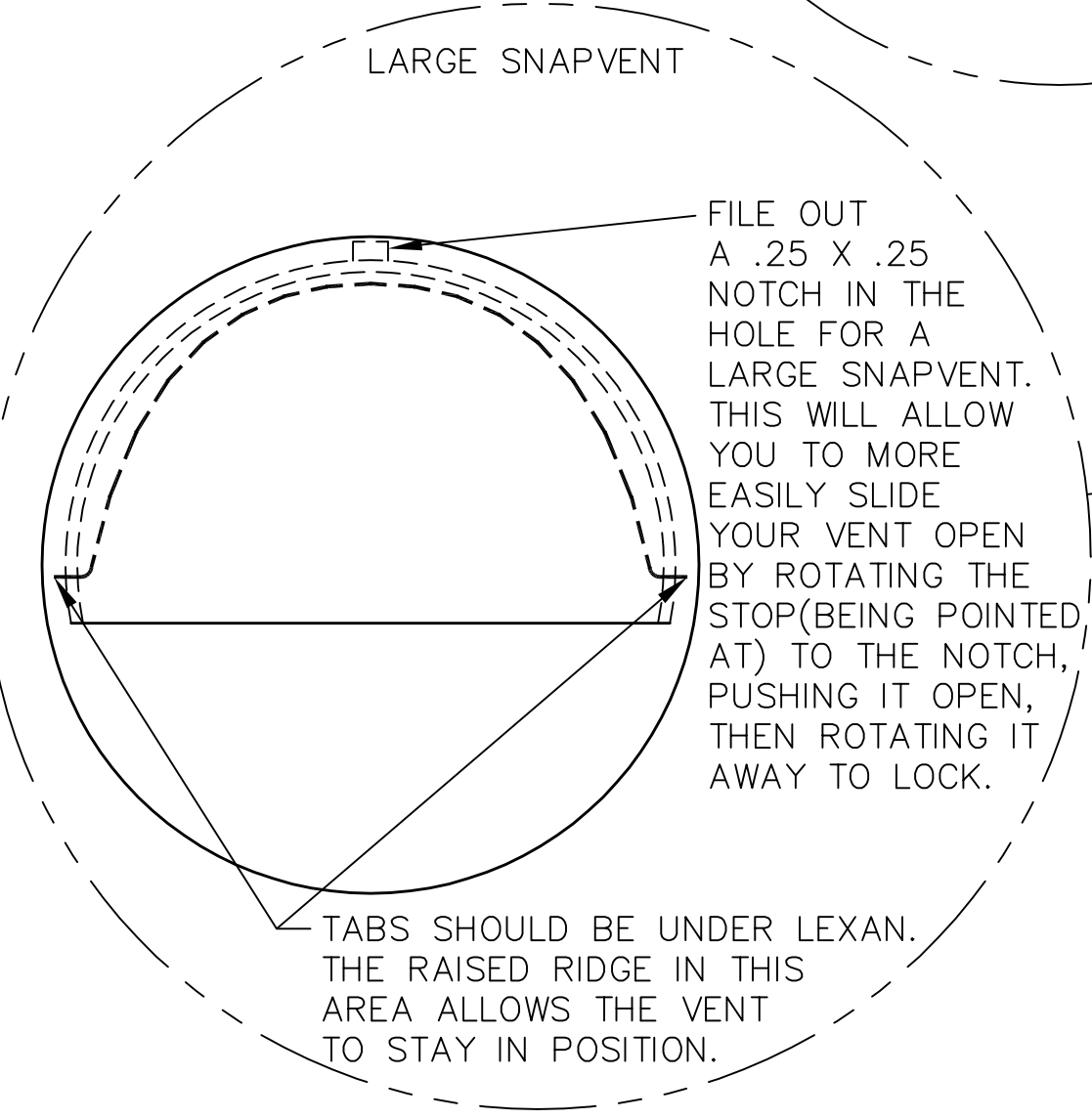


THIS DOCUMENT PROPRIETARY TO TITAN AIRCRAFT, AND IS NOT TO BE USED, CIRCULATED, REPRODUCED, COPIED, OR DISCLOSED IN ANY MANNER WITHOUT PRIOR WRITTEN PERMISSION OF AN AUTHORIZED OFFICIAL OF TITAN AIRCRAFT.

DRILL APPROPRIATE SIZE HOLE WITH HOLE SAW WHERE YOU WILL BE PLACING THE VENTS. LARGE SNAPVENTS REQUIRE A 3 .25" HOLE. SMALL VENTS REQUIRE 2 .125" DIA. HOLE. INSERT SNAPVENT AND SECURE WITH TIES. ROTATE SNAPVENTS FOR DESIRED USE. OPENING SHOULD FACE FORWARD FOR TAKING IN FRESH AIR, FACING BACKWARDS FOR VENTILATING OUT CABIN AIR AND DOWN DURING WINTER (NEUTRAL POSITION).



PLACE THE SNAPVENT IN THE HOLE FROM THE INSIDE OF THE AIRCRAFT. IN COLD WEATHER THE SNAPVENT SHOULD BE WARM, AT A ROOM TEMPERATURE OF AT LEAST 70° F, WHILE BEING INSTALLED.



TITAN AIRCRAFT SUPPLY
1419 STATE ROUTE 45 SOUTH
AUSTINBURG, OHIO 44010

DRAWN K. BOHRER		DATE 1/16/96	DETAIL NAME SNAPVENT INSTALLATION	
CHECKED B. PASSAFIUME		DATE 3/18/97	SCALE N/A	PART NO.
APPROVED J. WILLIAMS		DATE 3/18/97	ASSEMBLY NAME SINGLE AND TWO PLACE TORNADO	
			PART NO.	DRAWING NO.
			DRAWING NO. B 97-INS-0814-A	